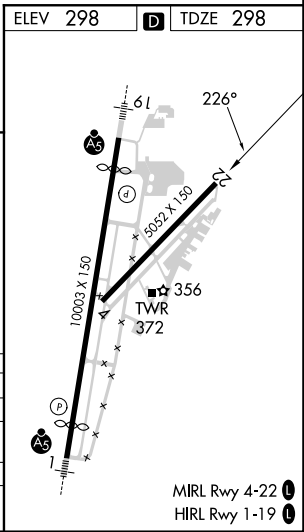
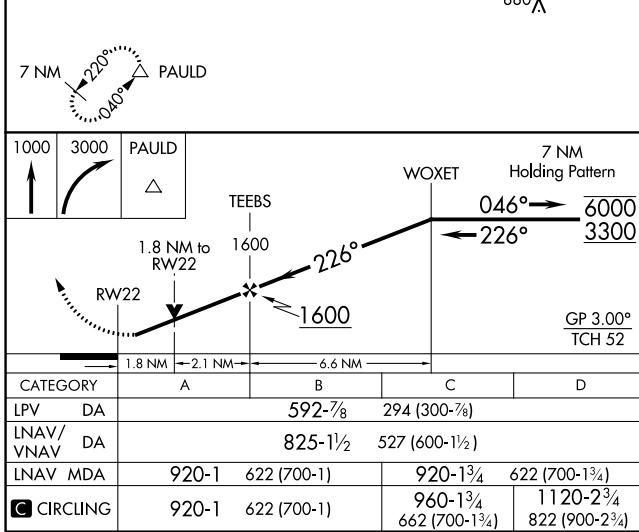
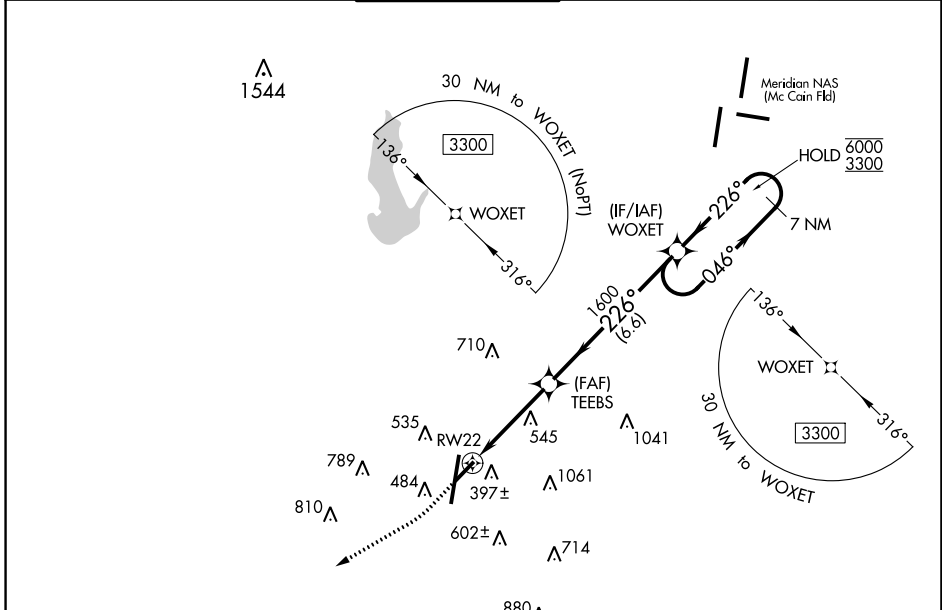


WAAS CH <b>48833</b> <b>W22A</b>	APP CRS <b>226°</b>	Rwy Idg <b>5052</b> TDZE <b>298</b> Apt Elev <b>298</b>
--	------------------------	---

# RNAV (GPS) RWY 22

KEY FLD (MEI)

RNP APCH - GPS.				MISSED APPROACH: Climb to 1000 then climbing right turn to 3000 direct PAULD and hold.	
▼ Rwy 22 helicopter visibility reduction below 3/4 SM NA. ▲ For uncompensated Baro-VNAV systems, LNAV/VNAV NA below -7°C or above 54°C. ▲ Circling NA east of Rwy 1 and southeast of Rwy 22.					
ATIS <b>126.475 291.675</b>	MERIDIAN APP CON ★ <b>120.5 269.325</b>	KEY TOWER ★ <b>133.975 (CTAF) 0 257.8</b>	GND CON <b>121.9 348.6</b>	CLNC DEL <b>121.9 348.6</b>	UNICOM <b>122.95</b>



SC-4, 26 DEC 2024 to 23 JAN 2025

SC-4, 26 DEC 2024 to 23 JAN 2025