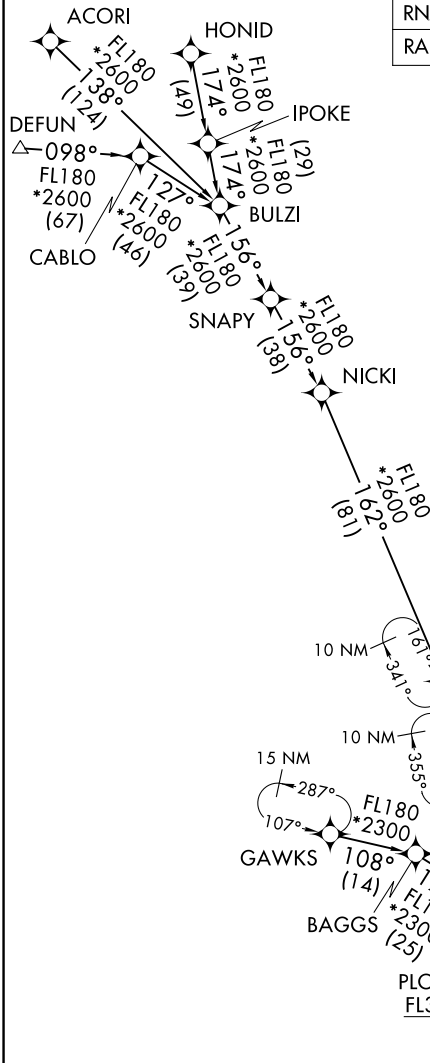


CUURT ONE ARRIVAL (RNAV) Transition Routes

MIAMI, FLORIDA

RNAV 1 - DME/DME/IRU or GPS.
RADAR required.

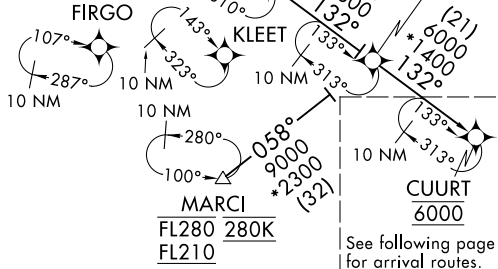
MIAMI APP CON
 120.5 350.225
 ATIS
 125.9



NOTE: Jet aircraft only.
 NOTE: Do not file BROMO or SCURF Transition - to be assigned by ATC.
 NOTE: SABEE Transition for traffic departing KTPA area only.

NOTE: Chart not to scale.

- ACORI TRANSITION (ACORI.CUURT1)
- BROMO TRANSITION (BROMO.CUURT1)
- DEFUN TRANSITION (DEFUN.CUURT1)
- GAWKS TRANSITION (GAWKS.CUURT1)
- HONID TRANSITION (HONID.CUURT1)
- MARCI TRANSITION (MARCI.CUURT1)
- SABEE TRANSITION (SABEE.CUURT1)
- SCURF TRANSITION (SCURF.CUURT1)



See following page for arrival routes.

CUURT ONE ARRIVAL (RNAV) Transition Routes

(CUURT.CUURT1) 15JUN23

MIAMI, FLORIDA

MIAMI-OPA LOCKA EXEC (OPF)

SE-3, 26 DEC 2024 to 23 JAN 2025

SE-3, 26 DEC 2024 to 23 JAN 2025

(CUURT.CUURT1) 23166

AL-256 (FAA)

MIAMI-OPA LOCKA EXEC (OPF)

CUURT ONE ARRIVAL (RNAV) Arrival Routes

MIAMI, FLORIDA

RNAV 1 - DME/DME/IRU or GPS.

RADAR required.

MIAMI APP CON

120.5 350.225

ATIS

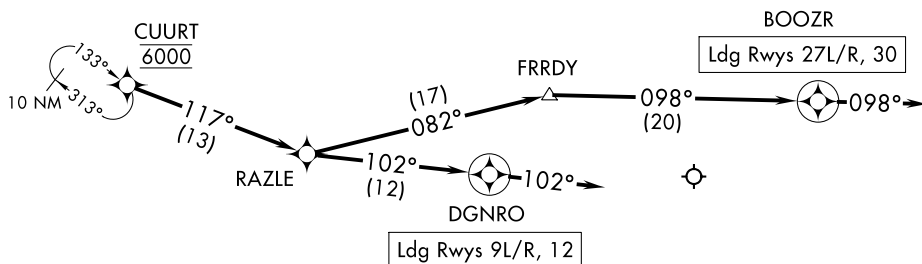
125.9

NOTE: Jet aircraft only.

NOTE: Landing east use Rwy 9L Transition, landing west use Rwy 27R Transition.

Expect runway assignment from MIA approach prior to CUURT.

NOTE: Between 2300L and 0700L expect Rwy 12.



SE-3, 26 DEC 2024 to 23 JAN 2025

SE-3, 26 DEC 2024 to 23 JAN 2025

NOTE: Chart not to scale.

ARRIVAL ROUTE DESCRIPTION

From CUURT on track 117° to RAZLE.

LANDING RUNWAYS 9L/R, 12: From RAZLE on track 102° to DGNRO, then on track 102°. Expect RADAR vectors to final approach course.

LANDING RUNWAYS 27L/R, 30: From RAZLE on track 082° to FRRDY, then on track 098° to BOOZR, then on track 098°. Expect RADAR vectors to final approach course.

CUURT ONE ARRIVAL (RNAV) Arrival Routes

MIAMI, FLORIDA

(CUURT.CUURT1) 15JUN23

MIAMI-OPA LOCKA EXEC (OPF)