

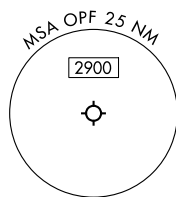
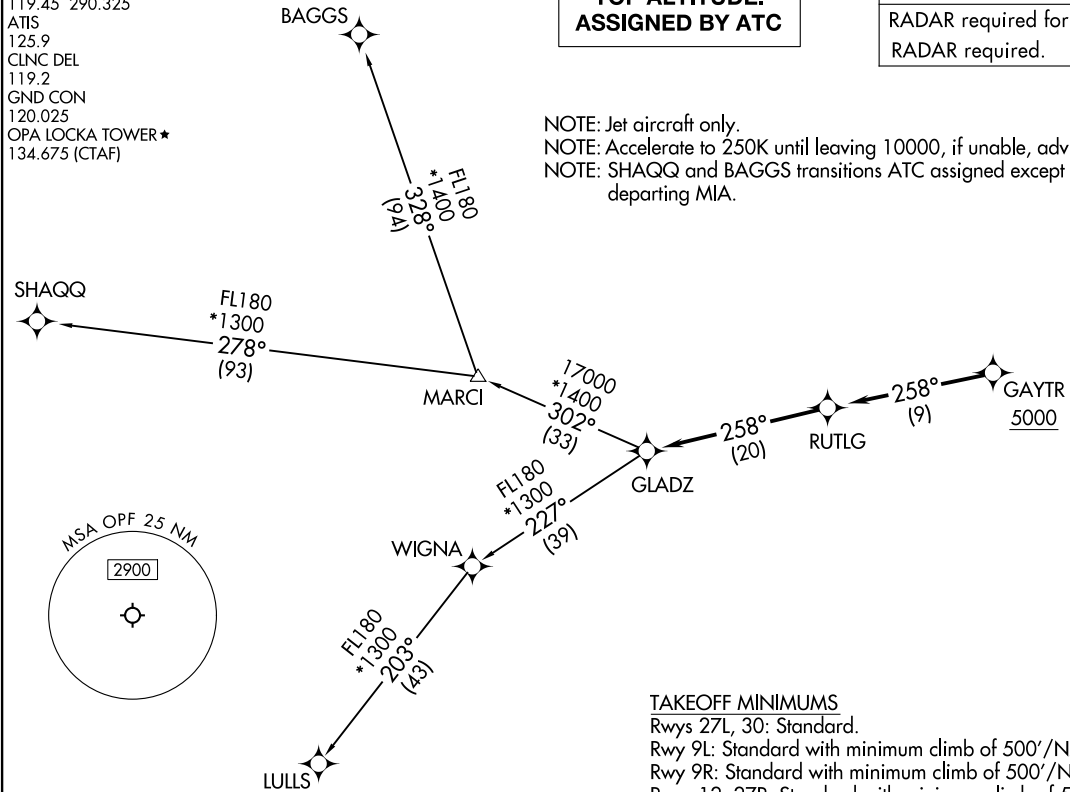
GLADZ FOUR DEPARTURE (RNAV)  
(GLADZ4, GLADZ) 31OCT24

MIAMI DEP CON  
119.45 290.325  
ATIS  
125.9  
CLNC DEL  
119.2  
GND CON  
120.025  
OPA LOCKA TOWER ★  
134.675 (CTAF)

**TOP ALTITUDE:  
ASSIGNED BY ATC**

RNAV-1 DME/DME/IRU or GPS.  
RADAR required for NON-GPS equipped aircraft.  
RADAR required.

NOTE: Jet aircraft only.  
NOTE: Accelerate to 250K until leaving 10000, if unable, advise ATC.  
NOTE: SHAQQ and BAGGS transitions ATC assigned except aircraft departing MIA.



**TAKEOFF MINIMUMS**  
Rwys 27L, 30: Standard.  
Rwy 9L: Standard with minimum climb of 500'/NM to 1000.  
Rwy 9R: Standard with minimum climb of 500'/NM to 700.  
Rwys 12, 27R: Standard with minimum climb of 500'/NM to 600.

NOTE: Chart not to scale.

(CONTINUED ON FOLLOWING PAGE)

MIAMI, FLORIDA  
MIAMI-OPA LOCKA EXEC (OPF)  
(GLADZ4, GLADZ) 31OCT24

(GLADZ4, GLADZ) 24305  
GLADZ FOUR DEPARTURE (RNAV)  
AL-256 (FAA)  
MIAMI-OPA LOCKA EXEC (OPF)  
MIAMI, FLORIDA

# GLADZ FOUR DEPARTURE (RNAV)



## DEPARTURE ROUTE DESCRIPTION

TAKEOFF RUNWAYS 9L/R: Climb on heading 093° or as assigned by ATC for RADAR vectors to cross GAYTR at or above 5000, thence. . . .

TAKEOFF RUNWAY 12: Climb on heading 128° or as assigned by ATC for RADAR vectors to cross GAYTR at or above 5000, thence. . . .

TAKEOFF RUNWAYS 27L/R: Climb on heading 273° or as assigned by ATC for RADAR vectors to cross GAYTR at or above 5000, thence. . . .

TAKEOFF RUNWAY 30: Climb on heading 308° or as assigned by ATC for RADAR vectors to cross GAYTR at or above 5000, thence. . . .

. . . on track 258° to RUTLG, then on track 258° to GLADZ, then on transition. Maintain ATC assigned altitude, expect clearance to filed altitude 10 minutes after departure.

BAGGS TRANSITION (GLADZ4.BAGGS)

LULLS TRANSITION (GLADZ4.LULLS)

SHAQQ TRANSITION (GLADZ4.SHAQQ)

SE-3, 26 DEC 2024 to 23 JAN 2025

SE-3, 26 DEC 2024 to 23 JAN 2025