

LOC/DME I-PLJ 111.35 Chan 50 (Y)	APP CRS 273°	Rwy Idg 8002 TDZE 8 Apt Elev 8
--	------------------------	--

ILS or LOC RWY 27R

MIAMI-OPA LOCKA EXEC (OPF)

▼ DME required. When local altimeter setting not received, use Miami Intl altimeter setting and increase all DA/MDA 20 feet and Circling Cat D visibility ¼ SM. For inop ALS, increase S-ILS 27R all Cats visibility to ¾ SM and S-LOC 27R Cats C/D visibility to 1½ SM. Rwy 27R helicopter visibility reduction below ¾ SM NA. Autopilot coupled approach NA below 700 feet.

MALS

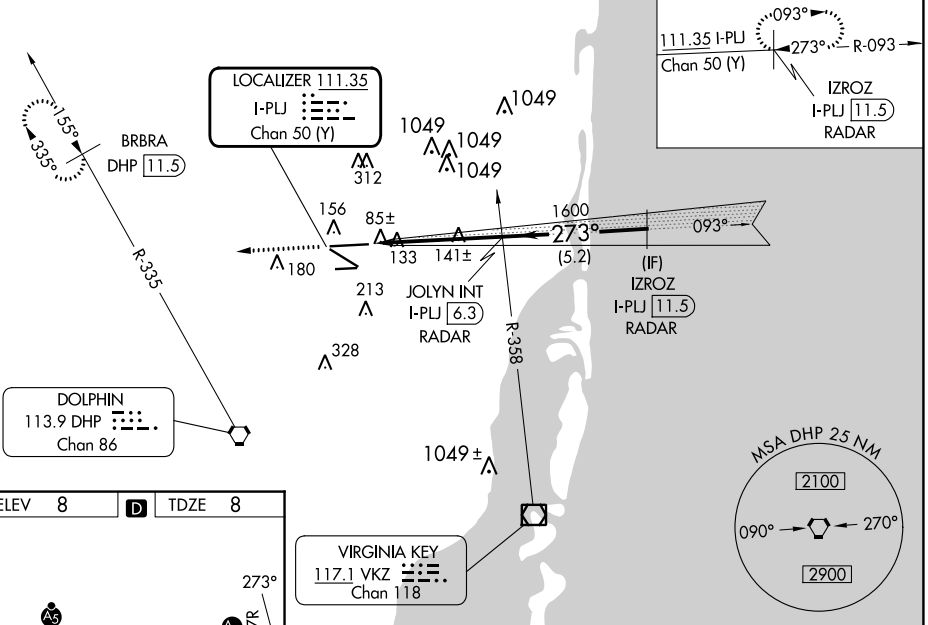


MISSED APPROACH: Climb to 2000 heading 273° and DHP VORTAC R-335 to BRBRA/DHP 11.5 DME and hold.

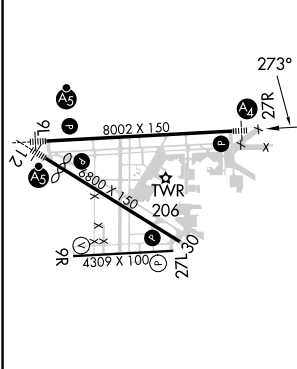
ATIS 125.9	MIAMI APP CON 128.6 306.975	OPA LOCKA TOWER ★ 134.675 (CTAF) 0	GND CON 120.025	CLNC DEL 119.2	GCO 119.45
----------------------	---------------------------------------	--	---------------------------	--------------------------	----------------------

RADAR REQUIRED

ALTERNATE MISSED APCH FIX



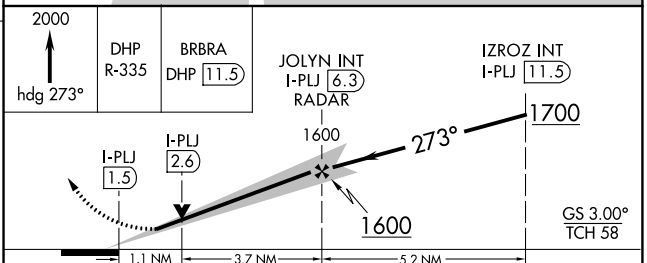
ELEV 8	D	TDZE 8
---------------	----------	---------------



MIRL Rwy 9R-27L
HIRL Rwys 9L-27R and 12-30

FAF to MAP 4.8 NM

Knots	60	90	120	150	180
Min:Sec	4:48	3:12	2:24	1:55	1:36



CATEGORY	A	B	C	D
S-ILS 27R	291-¾ 283 (300-¾)			
S-LOC 27R	420-¾	412 (500-¾)	420-1	412 (500-1)
CIRCLING	540-1	532 (600-1)	620-1¾ 612 (700-1¾)	740-2¼ 732 (800-2¼)

SE-3, 26 DEC 2024 to 23 JAN 2025

SE-3, 26 DEC 2024 to 23 JAN 2025