

HURCN FOUR DEPARTURE (RNAV) Departure Routes
(HURCN4.HURCN) 21 MAR 24

MIAMI, FLORIDA
MIAMI INTL (MIA)

See following page
for transition routes.



NOTE: Jet aircraft only.
NOTE: Accelerate to 250K until leaving 10000,
if unable, advise ATC.

(CONTINUED ON FOLLOWING PAGE)

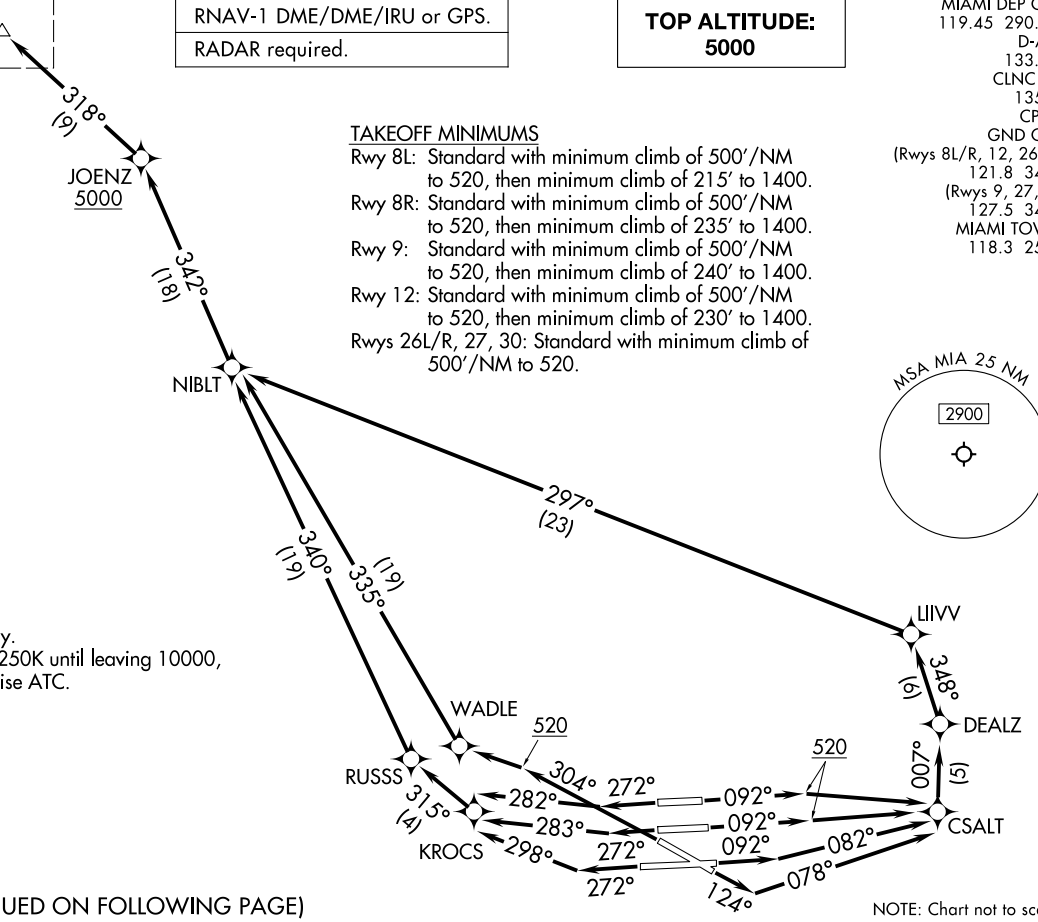
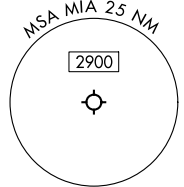
RNAV-1 DME/DME/IRU or GPS.
RADAR required.

**TOP ALTITUDE:
5000**

MIAMI DEP CON
119.45 290.325
D-ATIS
133.675
CLNC DEL
135.35
CPDLC
GND CON
(Rwys 8L/R, 12, 26L/R)
121.8 348.6
(Rwys 9, 27, 30)
127.5 348.6
MIAMI TOWER
118.3 256.9

TAKEOFF MINIMUMS

- Rwy 8L: Standard with minimum climb of 500'/NM to 520, then minimum climb of 215' to 1400.
- Rwy 8R: Standard with minimum climb of 500'/NM to 520, then minimum climb of 235' to 1400.
- Rwy 9: Standard with minimum climb of 500'/NM to 520, then minimum climb of 240' to 1400.
- Rwy 12: Standard with minimum climb of 500'/NM to 520, then minimum climb of 230' to 1400.
- Rwys 26L/R, 27, 30: Standard with minimum climb of 500'/NM to 520.



(HURCN4.HURCN) 24081
HURCN FOUR DEPARTURE (RNAV) Departure Routes
AL-257 (FAA)

MIAMI INTL (MIA)
MIAMI, FLORIDA

NOTE: Chart not to scale.

(HURCN4.HURCN) 24081

AL-257 (FAA)

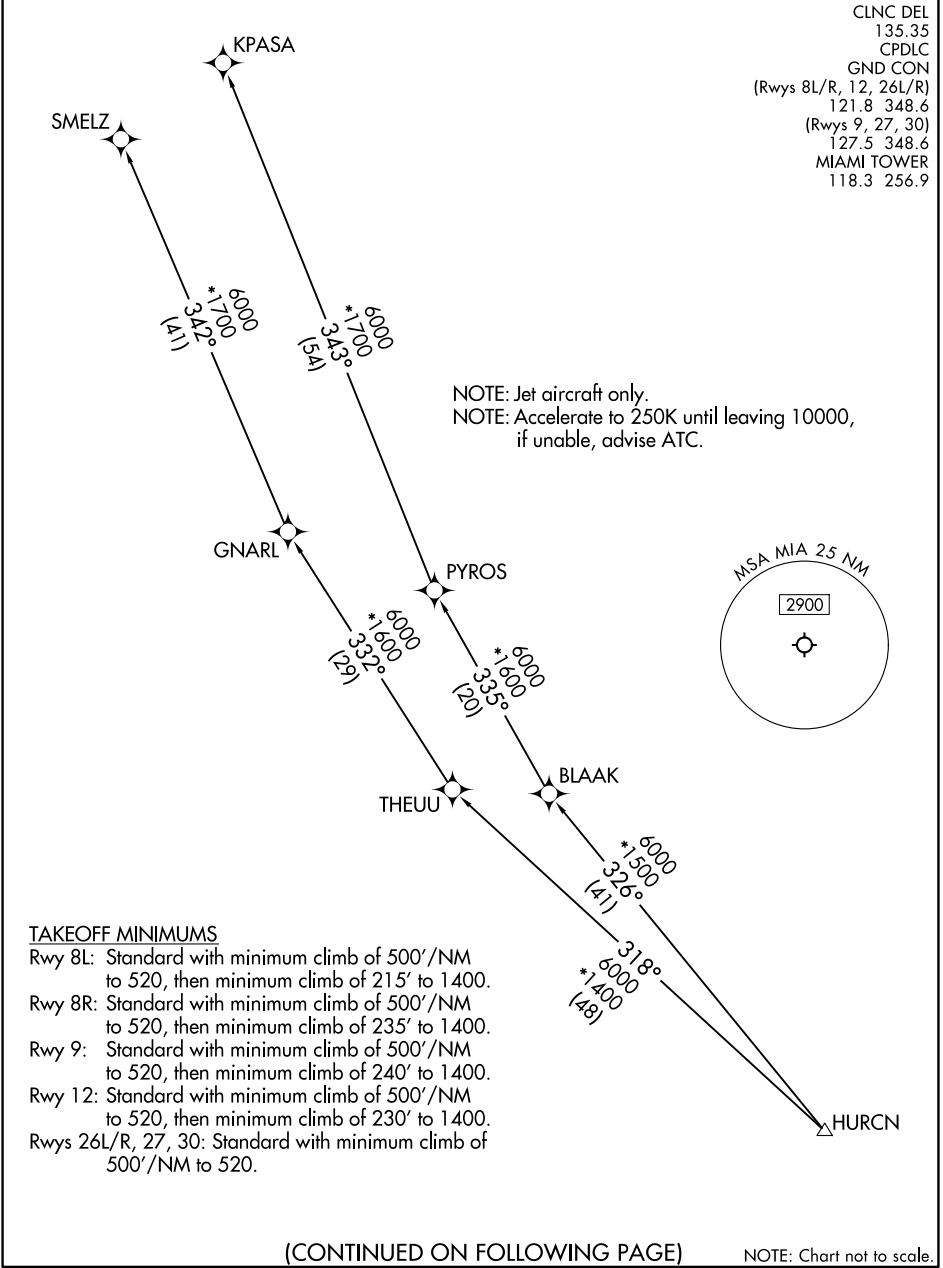
MIAMI INTL (MIA)
MIAMI, FLORIDA

HURCN FOUR DEPARTURE (RNAV) Transition Routes

RNAV-1 DME/DME/IRU or GPS.
RADAR required.

TOP ALTITUDE: 5000

MIAMI DEP CON
119.45 290.325
D-ATIS
133.675
CLNC DEL
135.35
CPDLC
GND CON
(Rwys 8L/R, 12, 26L/R)
121.8 348.6
(Rwys 9, 27, 30)
127.5 348.6
MIAMI TOWER
118.3 256.9



SE-3, 26 DEC 2024 to 23 JAN 2025

SE-3, 26 DEC 2024 to 23 JAN 2025

(CONTINUED ON FOLLOWING PAGE)

NOTE: Chart not to scale.

HURCN FOUR DEPARTURE (RNAV) Transition Routes

(HURCN4.HURCN) 21MAR24

MIAMI, FLORIDA
MIAMI INTL (MIA)

HURCN FOUR DEPARTURE(RNAV)



DEPARTURE ROUTE DESCRIPTION

SEE ADDITIONAL REQUIREMENTS ON AAUP

TAKEOFF RUNWAYS 8L/R: Climb on heading 092° to 520, then direct CSALT, then on track 007° to DEALZ, then on track 348° to LIIVV, then on track 297° to NIBLT, then on track 342° to cross JOENZ at or above 5000, thence. . .

TAKEOFF RUNWAY 9: Climb on heading 092° to intercept course 082° to CSALT, then on track 007° to DEALZ, then on track 348° to LIIVV, then on track 297° to NIBLT, then on track 342° to cross JOENZ at or above 5000, thence. . .

TAKEOFF RUNWAY 12: Climb on heading 124° to intercept course 078° to CSALT, then on track 007° to DEALZ, then on track 348° to LIIV, then on track 297° to NIBLT, then on track 342° to cross JOENZ at or above 5000, thence. . .

TAKEOFF RUNWAY 26L: Climb on heading 272° to intercept course 283° to KROCS, then on track 315° to RUSSS, then on track 340° to NIBLT, then on track 342° to cross JOENZ at or above 5000, thence. . .

TAKEOFF RUNWAY 26R: Climb on heading 272° to intercept course 282° to KROCS, then on track 315° to RUSSS, then on track 340° to NIBLT, then on track 342° to cross JOENZ at or above 5000, thence. . .

TAKEOFF RUNWAY 27: Climb on heading 272° to intercept course 298° to KROCS, then on track 315° to RUSSS, then on track 340° to NIBLT, then on track 342° to cross JOENZ at or above 5000, thence. . .

TAKEOFF RUNWAY 30: Climb on heading 304° to 520, then direct WADLE, then on track 335° to NIBLT, then on track 342° to cross JOENZ at or above 5000, thence. . .

. . .on track 318° to HURCN, then on transition, maintain 5000. Expect clearance to filed altitude within 10 minutes after departure.

KPASA TRANSITION (HURCN4.KPASA)

SMELZ TRANSITION (HURCN4.SMELZ)

SE-3, 26 DEC 2024 to 23 JAN 2025

SE-3, 26 DEC 2024 to 23 JAN 2025