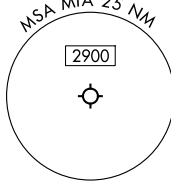
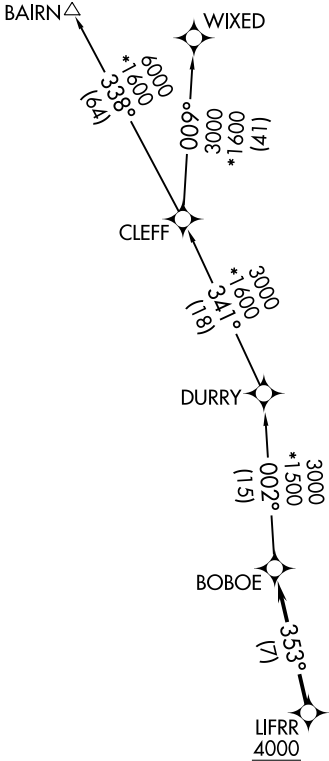


# LIFRR TWO DEPARTURE (RNAV)

RNAV 1 - DME/DME/IRU or GPS.  
RADAR required for non-GPS equipped aircraft.

**TOP ALTITUDE:  
ASSIGNED BY ATC**

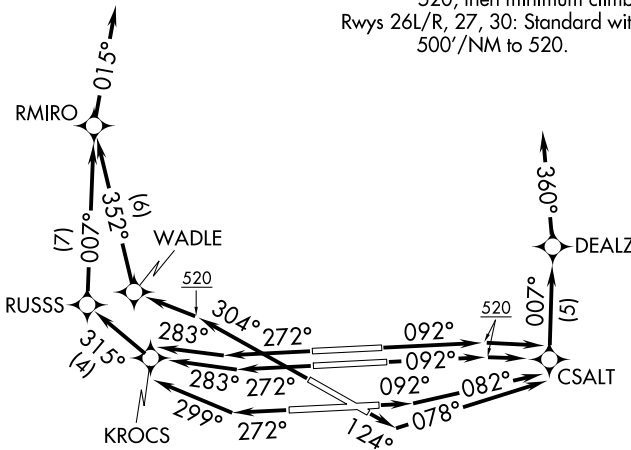
MIAMI DEP CON  
119.45 290.325  
D-ATIS  
133.675  
CLNC DEL  
135.35  
CPDLC  
GND CON  
(Rwys 8L/R, 12, 26L/R)  
121.8 348.6  
(Rwys 9, 27, 30)  
127.5 348.6  
MIAMI TOWER  
118.3 256.9



NOTE: Accelerate to 250K until leaving 10000, if unable, advise ATC.  
NOTE: Jet aircraft only.  
NOTE: For aircraft filed at or below 12000.

### TAKEOFF MINIMUMS

- Rwy 8L: Standard with minimum climb of 500'/NM to 520, then minimum climb of 215'/NM to 1400.
- Rwy 8R: Standard with minimum climb of 500' per NM to 520, then minimum climb of 235'/NM to 1400.
- Rwy 9: Standard with minimum climb of 500'/NM to 520, then minimum climb of 240'/NM to 1400.
- Rwy 12: Standard with minimum climb of 500'/NM to 520, then minimum climb of 230'/NM to 1400.
- Rwys 26L/R, 27, 30: Standard with minimum climb of 500'/NM to 520.



(CONTINUED ON FOLLOWING PAGE)

NOTE: Chart not to scale.

# LIFRR TWO DEPARTURE (RNAV)

# LIFRR TWO DEPARTURE (RNAV)



## DEPARTURE ROUTE DESCRIPTION SEE ADDITIONAL REQUIREMENTS ON AAUP

TAKEOFF RUNWAYS 8L/R: Climb on heading 092° to 520, then direct CSALT, then on track 007° to DEALZ, then on heading 360°, thence. . .

TAKEOFF RUNWAY 9: Climb on heading 092° to intercept course 082° to CSALT, then on track 007° to DEALZ, then on heading 360°, thence. . .

TAKEOFF RUNWAY 12: Climb on heading 124° to intercept course 078° to CSALT, then on track 007° to DEALZ, then on heading 360°, thence. . .

TAKEOFF RUNWAYS 26L/R: Climb on heading 272° to intercept course 283° to KROCS, then on track 315° to RUSSS, then on track 007° to RMIRO, then on heading 015° or as assigned by ATC, thence. . .

TAKEOFF RUNWAY 27: Climb on heading 272° to intercept course 299° to KROCS, then on track 315° to RUSSS, then on track 007° to RMIRO, then on heading 015° or as assigned by ATC, thence. . .

TAKEOFF RUNWAY 30: Climb on heading 304° to 520, then direct WADLE, then on track 352° to RMIRO, then on heading 015°, or as assigned by ATC, thence. . .

. . .for vector to cross LIFRR at or above 4000, then on track 353° to BOBOE, then on assigned transition, maintain ATC assigned altitude, expect clearance to filed altitude within 10 minutes after departure.

BAIRN TRANSITION (LIFRR2.BAIRN)

WIXED TRANSITION (LIFRR2.WIXED)

SE-3, 26 DEC 2024 to 23 JAN 2025

SE-3, 26 DEC 2024 to 23 JAN 2025