

MIAMI TWO DEPARTURE  
(MIA2.MIA) 26DEC24

MIAMI, FLORIDA  
MIAMI INTL (MIA)

RADAR and DME required.

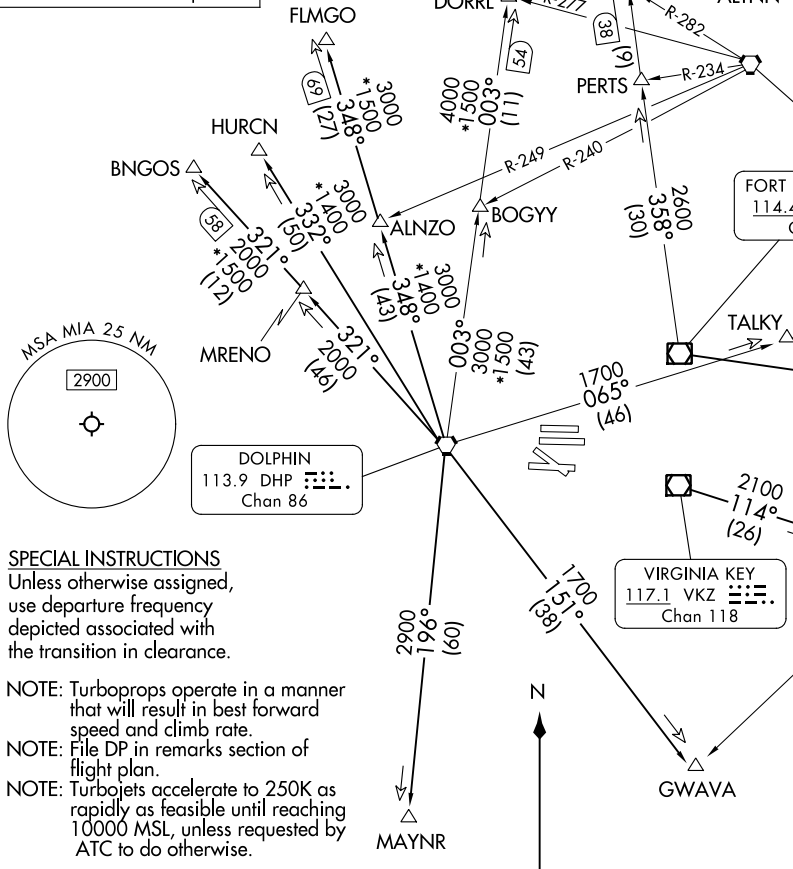
**TOP ALTITUDE:  
(JETS) 5000  
(TURBO-PROPS) 3000**

MIAMI DEP CON  
119.45 290.325  
(ALTNN, BEECH, BNGOS, DORRL,  
FLMGO, HURCN, FOLZZ, ZFP)  
125.5 354.1  
(GWAVA, KETLL, MAYNR)  
D-ATIS  
133.675  
CLNC DEL  
135.35  
CPDLC  
GND CON  
121.8 348.6  
(Rwys 8L/R, 12, 26L/R)  
127.5 348.6  
(Rwys 9, 27, 30)  
MIAMI TOWER  
118.3 256.9

MIAMI TWO DEPARTURE  
(MIA2.MIA) 24361

AL-257 (FAA)

MIAMI INTL (MIA)  
MIAMI, FLORIDA



**SPECIAL INSTRUCTIONS**  
Unless otherwise assigned,  
use departure frequency  
depicted associated with  
the transition in clearance.

- NOTE: Turboprops operate in a manner  
that will result in best forward  
speed and climb rate.
- NOTE: File DP in remarks section of  
flight plan.
- NOTE: Turbojets accelerate to 250K as  
rapidly as feasible until reaching  
10000 MSL, unless requested by  
ATC to do otherwise.

NOTE: Chart not to scale.

(CONTINUED ON FOLLOWING PAGE)

# MIAMI TWO DEPARTURE



## DEPARTURE ROUTE DESCRIPTION

TAKEOFF ALL RUNWAYS: Climb on assigned heading for RADAR vectors to assigned transition. Jets climb and maintain 5000, props and turboprops climb and maintain 3000. Expect filed altitude 10 minutes after departure.

ALTNN TRANSITION (MIA2.ALTNN): From over FLL VOR/DME on FLL R-358 to ALTNN.

BEECH TRANSITION (MIA2.BEECH): From over FLL VOR/DME on FLL R-104 to BEECH.

BNGOS TRANSITION (MIA2.BNGOS): From over DHP VORTAC on DHP R-321 to BNGOS.

DORRL TRANSITION (MIA2.DORRL): From over DHP VORTAC on DHP R-003 to DORRL.

FLMGO TRANSITION (MIA2.FLMGO): From over DHP VORTAC on DHP R-348 to FLMGO.

FOLZZ TRANSITION (MIA2.FOLZZ): From over DHP VORTAC on DHP R-065 to FOLZZ.

FREEPORT TRANSITION (MIA2.ZFP): From over DHP VORTAC on DHP R-065 to FOLZZ then on ZFP R-249 to ZFP VOR/DME.

GWAVA TRANSITION (MIA2.GWAVA): From over DHP VORTAC on DHP R-151 to GWAVA.

HURCN TRANSITION (MIA2.HURCN): From over DHP VORTAC on DHP R-332 to HURCN.

KETLL TRANSITION (MIA2.KETLL): From over VKZ VOR/DME on VKZ R-114 to KETLL.

MAYNR TRANSITION (MIA2.MAYNR): From over DHP VORTAC on DHP R-196 to MAYNR.

SE-3, 26 DEC 2024 to 23 JAN 2025

SE-3, 26 DEC 2024 to 23 JAN 2025