

MIAMI, FLORIDA

AL-257 (FAA)

24137

WAAS CH <b>86903</b> <b>W26A</b>	APP CRS <b>272°</b>	Rwy Idg <b>8600</b> TDZE <b>9</b> Apt Elev <b>9</b>
--	------------------------	---

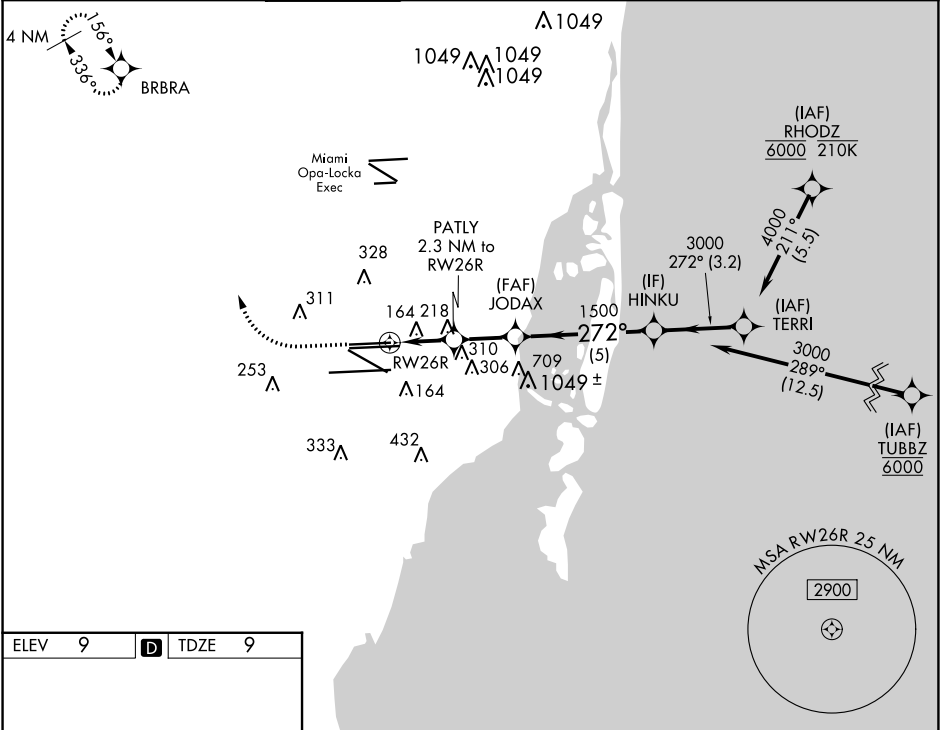
# RNAV (GPS) RWY 26R

MIAMI INTL (MIA)

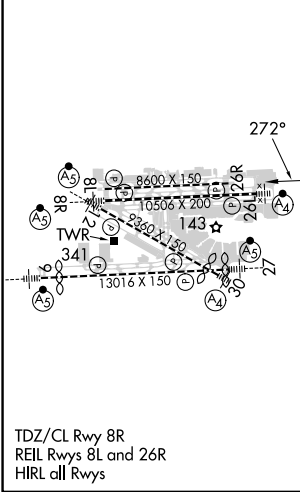
RNP APCH - GPS. MISSED APPROACH: Climb to 800 then climbing right turn to 4000 direct BRBRA and hold, continue climb-in-hold to 4000.

Simultaneous approach authorized. LNAV procedure NA during simultaneous operations. Use of FD or AP required during simultaneous operations. For uncompensated Baro-VNAV systems, LNAV/VNAV NA below 9°C or above 54°C.

D-ATIS ARR <b>119.15</b> DEP <b>133.675</b>	MIAMI APP CON <b>124.85 322.3</b>	MIAMI TOWER <b>118.3 256.9</b>	GND CON <b>121.8</b> (Rwys 8L/R, 12, 26L/R) <b>127.5</b> (Rwys 9, 27, 30)	<b>348.6</b>	CLNC DEL <b>135.35</b>	CPDLC
---	--------------------------------------	-----------------------------------	---	--------------	---------------------------	-------



ELEV 9	<b>D</b>	TDZE 9
--------	----------	--------



800	4000	BRBRA				
PATLY 2.3 NM to RW26R		JODAX 1500	HINKU 3000	TERRI 4000	GP 3.00° TCH 60	
RW26R 1.3 NM to RW26R		1.500				
1.3		1		2.2		5
CATEGORY	A	B	C	D		
LPV DA	265-3/4		256 (300-3/4)			
LNAV/VNAV DA	432-1 1/4		423 (500-1 1/4)			
LNAV MDA	480-1	471 (500-1)		480-1 3/8	471 (500-1 3/8)	

MIAMI, FLORIDA  
Amdt 5 14JUL22

25°48'N-80°17'W

# RNAV (GPS) RWY 26R

MIAMI INTL (MIA)

SE-3, 26 DEC 2024 to 23 JAN 2025

SE-3, 26 DEC 2024 to 23 JAN 2025