

| | | |
|---------|----------|------|
| APP CRS | Rwy Idg | 8579 |
| 124° | TDZE | 8 |
| | Apt Elev | 9 |

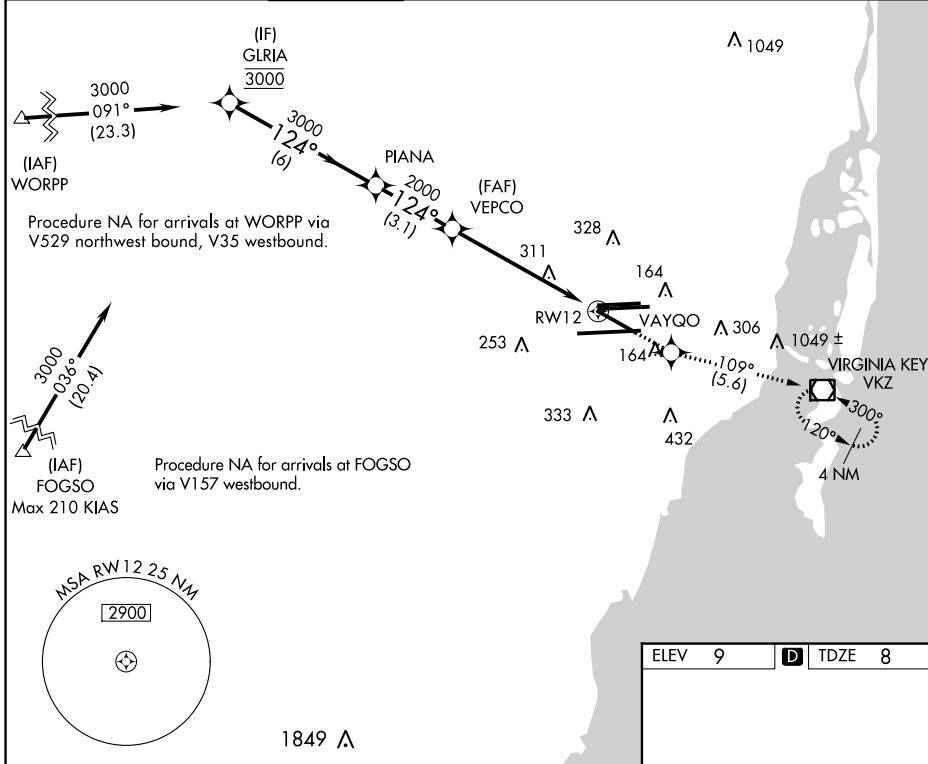
RNAV (RNP) Y RWY 12

MIAMI INTL (MIA)

GPS Required. For inoperative MALSR, increase 0.30 all Cats visibility to 1½. For uncompensated Baro-VNAV systems, procedure NA below 6°C (42°F) or above 49°C (120°F).

MALSR
MISSED APPROACH: Climb to 3000 direct VAYQO and via 109° track to VKZ VOR/DME and hold, continue climb-in-hold to 3000.

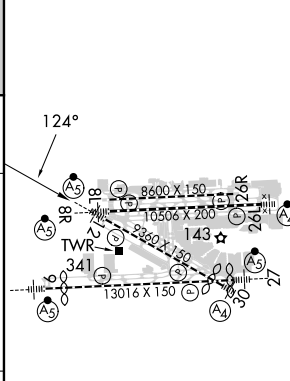
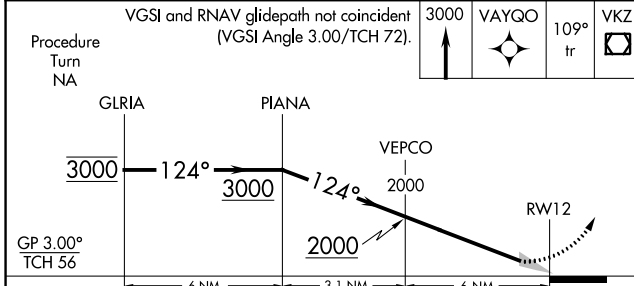
| | | | | | |
|-------------|---------------|-------------|--------------------------|----------|-------|
| D-ATIS | MIAMI APP CON | MIAMI TOWER | GND CON | CLNC DEL | CPDLC |
| ARR 119.15 | 124.85 322.3 | 118.3 256.9 | 121.8 (8L/8R/12/26L/26R) | 348.6 | |
| DEP 133.675 | | | 127.5 (9/27/30) | 135.35 | |



SE-3, 26 DEC 2024 to 23 JAN 2025

SE-3, 26 DEC 2024 to 23 JAN 2025

| | |
|--------|-----------------|
| ELEV 9 | D TDZE 8 |
|--------|-----------------|



| | | | | |
|-------------|---|--------|-------------|---|
| CATEGORY | A | B | C | D |
| RNP 0.30 DA | | 461/50 | 453 (500-1) | |

AUTHORIZATION REQUIRED

TDZ/CL Rwy 8R
 REIL Rwy 8L and 26R
 HIRL all Rwy