

APP CRS	Rwy Idg	<b>7913</b>
<b>305°</b>	TDZE	<b>8</b>
	Apt Elev	<b>9</b>

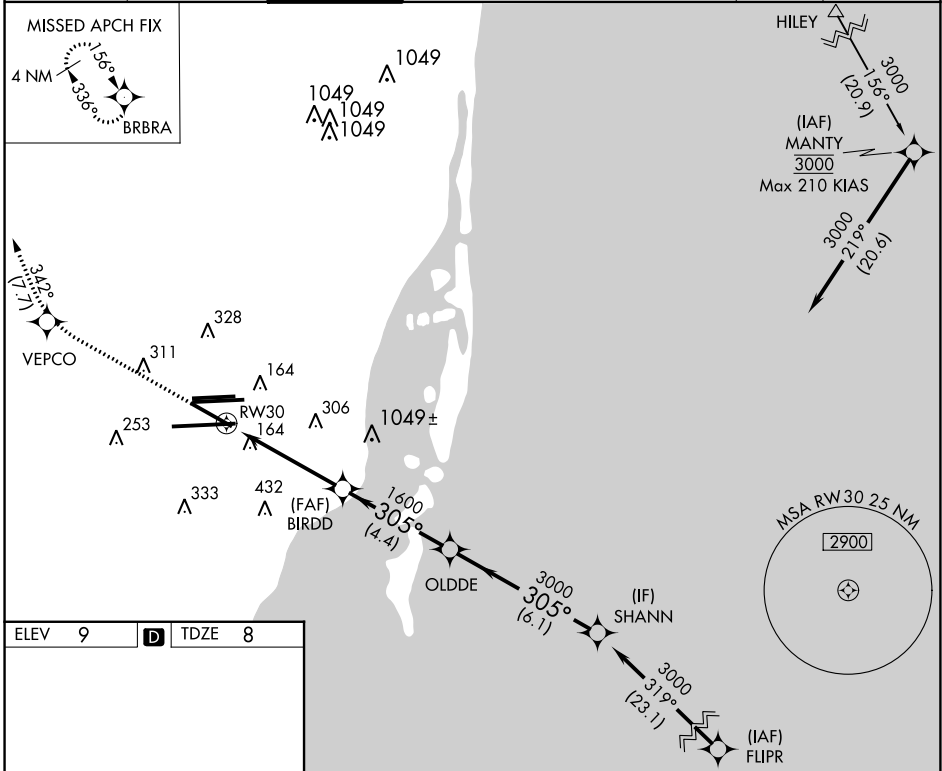
# RNAV (RNP) Y RWY 30

MIAMI INTL (MIA)

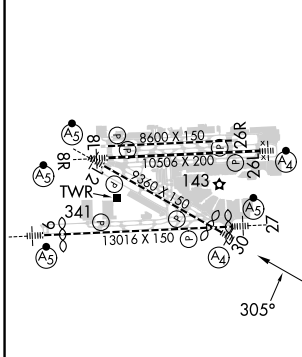
**NA** For inoperative MALS, increase RNP 0.23 all Cats visibility to 1½, RNP 0.30 all Cats to 1¾. GPS Required.  
For uncompensated Baro-VNAV systems, procedure NA below 6°C (42°F) or above 48°C (119°F).

**MALS**  
MISSED APPROACH: Climb to 3000 direct VEPCO and via 342° track to BRBRA and hold.

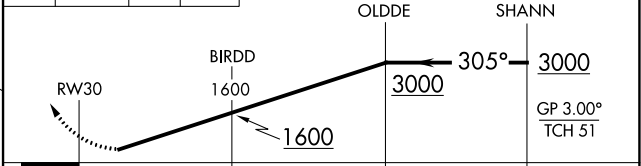
D-ATIS ARR <b>119.15</b> DEP <b>133.675</b>	MIAMI APP CON <b>124.85 322.3</b>	MIAMI TOWER <b>118.3 256.9</b>	<b>121.8</b> (8L/8R/12/26L/26R) <b>127.5</b> (9/27/30)	GND CON <b>348.6</b>	CLNC DEL <b>135.35</b>	CPDLC
---	--------------------------------------	-----------------------------------	---	-------------------------	---------------------------	-------



ELEV 9	<b>D</b>	TDZE 8
--------	----------	--------



3000 VEPCO 342° tr BRBRA VGSI and RNAV glidepath not coincident (VGSI Angle 3.00/TCH 71). Procedure Turn NA



CATEGORY	A	B	C	D
RNP 0.23 DA		426-1¼	418 (500-1¼)	
RNP 0.30 DA		521-1½	513 (600-1½)	

## AUTHORIZATION REQUIRED

SE-3, 26 DEC 2024 to 23 JAN 2025

SE-3, 26 DEC 2024 to 23 JAN 2025