

MIAMI, FLORIDA

AL-257 (FAA)

24137

WAAS CH 81905 W26B	APP CRS 272°	Rwy Idg 10220 TDZE 9 Apt Elev 9
--	------------------------	--

RNAV (GPS) Y RWY 26L

MIAMI INTL (MIA)

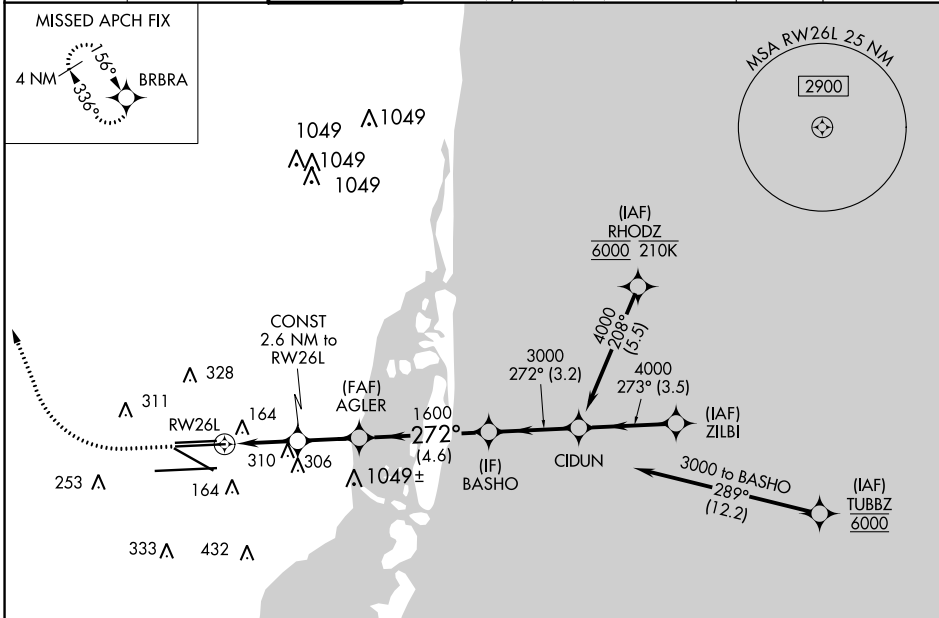
RNP APCH - GPS.

Simultaneous approach authorized. LNAV procedure NA during simultaneous operations. Inop table does not apply to LPV all Cats. For uncompensated Baro-VNAV systems, LNAV/VNAV NA below 9°C or above 54°C.

MALSF

MISSED APPROACH: Climb to 800 then climbing right turn to 4000 direct BRBRA and hold, continue climb-in-hold to 4000.

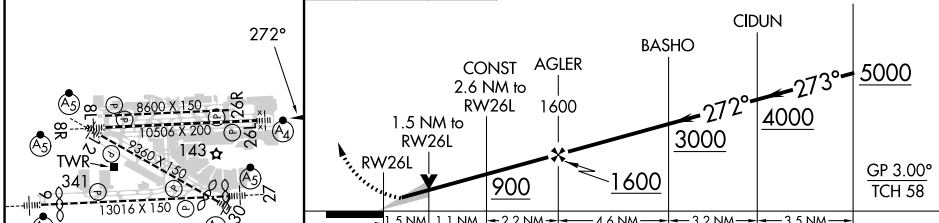
D-ATIS ARR 119.15 DEP 133.675	MIAMI APP CON 124.85 322.3	MIAMI TOWER 118.3 256.9	GND CON 121.8 (Rwys 8L/R, 12, 26L/R) 127.5 (Rwys 9, 27, 30)	348.6	CLNC DEL 135.35	CPDLC
---	--------------------------------------	-----------------------------------	---	--------------	---------------------------	-------



ELEV 9	D	TDZE 9
--------	----------	--------

800 4000 BRBRA

VGSI and RNAV glidepath not coincident (VGSI Angle 3.00/TCH 73).



CATEGORY	A	B	C	D
LPV DA		209/40	200 (200-¾)	
LNAV/VNAV DA		348/40	339 (400-¾)	
LNAV MDA	560/40	551 (600-¾)	560-1⅓	551 (600-1⅓)

MIAMI, FLORIDA
Amdt 4 14JUL22

25°48'N-80°17'W

RNAV (GPS) Y RWY 26L

MIAMI INTL (MIA)

SE-3, 26 DEC 2024 to 23 JAN 2025

SE-3, 26 DEC 2024 to 23 JAN 2025