

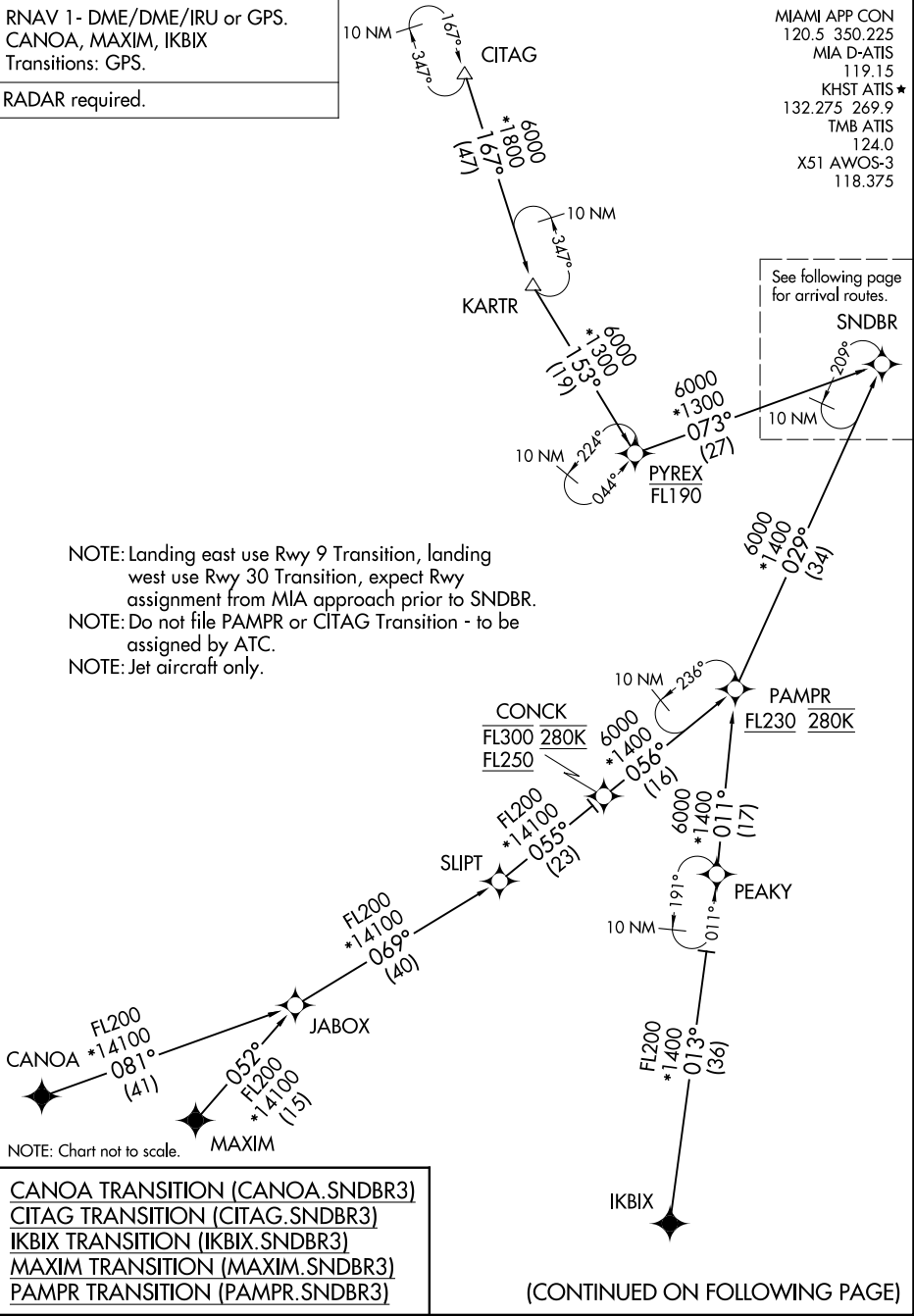
SNDBR THREE ARRIVAL (RNAV) Transition Routes

MIAMI, FLORIDA

RNAV 1 - DME/DME/IRU or GPS.
CANOA, MAXIM, IKBIX
Transitions: GPS.

RADAR required.

MIAMI APP CON
120.5 350.225
MIA D-ATIS
119.15
KHST ATIS *
132.275 269.9
TMB ATIS
124.0
X51 AWOS-3
118.375



NOTE: Landing east use Rwy 9 Transition, landing west use Rwy 30 Transition, expect Rwy assignment from MIA approach prior to SNDBR.
 NOTE: Do not file PAMPR or CITAG Transition - to be assigned by ATC.
 NOTE: Jet aircraft only.

NOTE: Chart not to scale.

- CANOA TRANSITION (CANOA.SNDBR3)
- CITAG TRANSITION (CITAG.SNDBR3)
- IKBIX TRANSITION (IKBIX.SNDBR3)
- MAXIM TRANSITION (MAXIM.SNDBR3)
- PAMPR TRANSITION (PAMPR.SNDBR3)

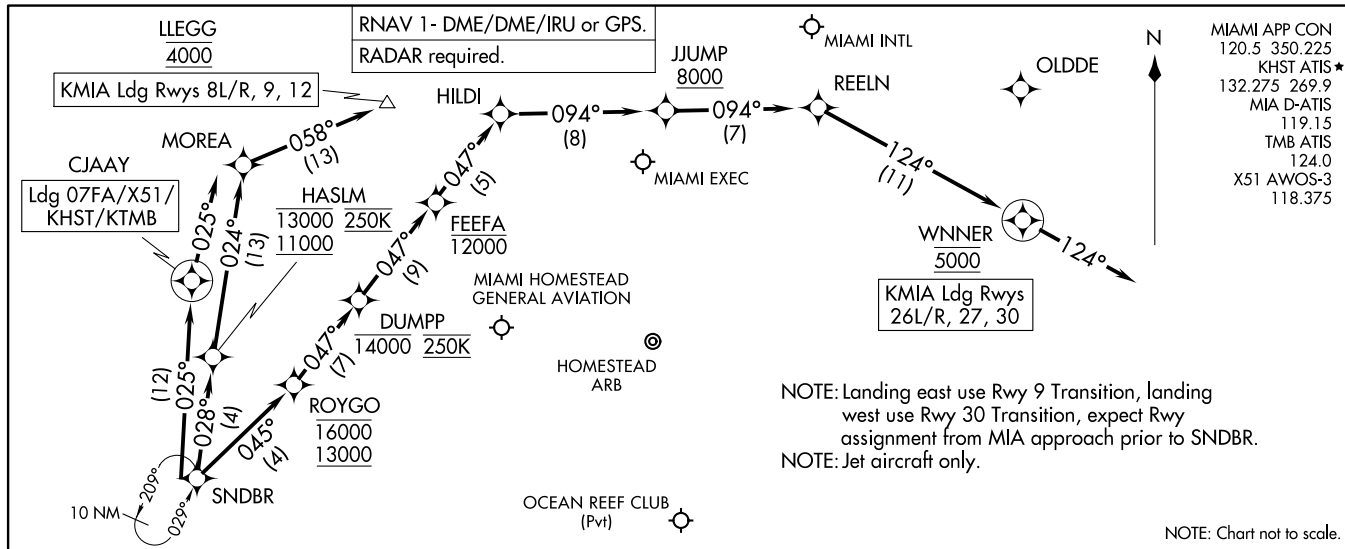
(CONTINUED ON FOLLOWING PAGE)

SE-3, 26 DEC 2024 to 23 JAN 2025

SE-3, 26 DEC 2024 to 23 JAN 2025

SNDBR THREE ARRIVAL (RNAV) Arrival Routes
 (SNDBR, SNDBR3) 29DEC22

MIAMI, FLORIDA



(SNDBR, SNDBR3) 23222
 SNDBR THREE ARRIVAL (RNAV) Arrival Routes
 AL-257 (FAA)

MIAMI, FLORIDA

ARRIVAL ROUTE DESCRIPTION

LANDING KMIA RUNWAYS 8L/R, 9, 12: From SNDBR on track 028° to cross HASLM between 11000 and 13000 and at 250K, then on track 024° to MOREA, then on track 058° to cross LLEGG at 4000. Expect ILS or RNAV Rwy 9 approach or RADAR vectors to final approach course.

LANDING KMIA RUNWAYS 26L/R, 27, 30: From SNDBR on track 045° to cross ROYGO between 13000 and 16000, then on track 047° to cross DUMPP at or below 14000 and at 250K, then on track 047° to cross FEEFA at or below 12000, then on track 047° to HILDI, then on track 094° to cross JJUMP at or above 8000, then on track 094° to REELN, then on track 124° to cross WNNER at 5000, then on track 124°. Expect RADAR vectors to final approach course.

LANDING 07FA/X51/KHST/KTMB: From SNDBR on track 025° to CJAAY, then on track 025°. Expect RADAR vectors to final approach course.