

HI-VOR or TACAN RWY 16R

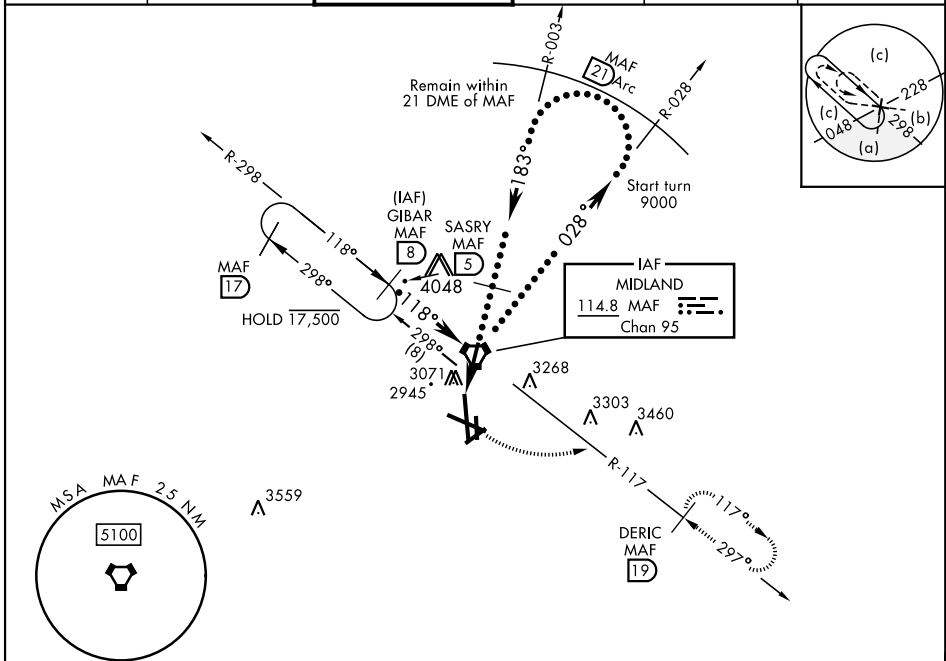
VORTAC MAF 114.8 Chan 95	APCH CRS 183°	Rwy ldg TDZE Arprt Elev 9501 2872 2872
--	-------------------------	--

AL-258 [USAF] MIDLAND INTL AIR AND SPACE PORT (KMAF)

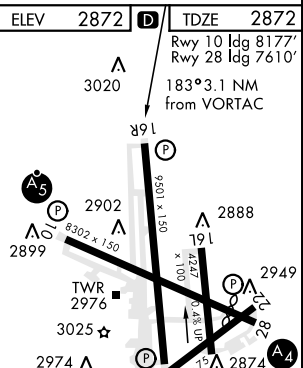
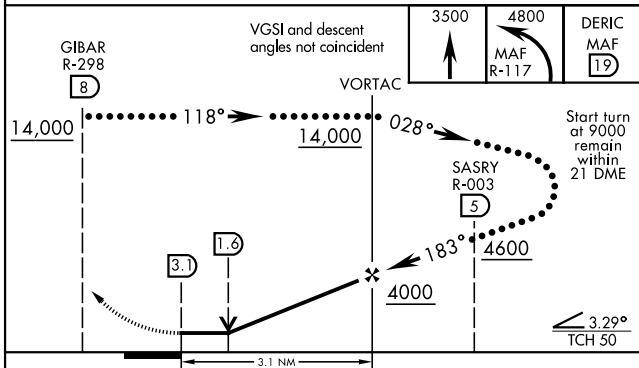
DME required.
* Circling Rwy 16L NA at night.

MISSED APPROACH: Climb to 3500 then climbing left turn to 4800 on MAF VORTAC R-117 to DERIC/MAF 19° DME and hold.

ATIS ★ 126.8 235.975	APP CON 124.6 290.4	TOWER ★ 118.7 (CTAF) 273.45	GND CON 121.9 348.6	CLNC DEL 118.05 317.65	UNICOM 122.95
--------------------------------	-------------------------------	---------------------------------------	-------------------------------	----------------------------------	-------------------------



EMERG SAFE ALT 100 NM 7000



CATEGORY	C	D	E
S-16R	3400-1½	528 (600-1½)	
CIRCLING *	3440-1½ 568 (600-1½)	3520-2 648 (700-2)	3600-2½ 728 (800-2½)

HIRL Rwy 10-28, 16R-34L
MIRL Rwy 4-22, 16L-34R
REIL Rwy 34L

HI-VOR or TACAN RWY 16R

SC-3, 26 DEC 2024 to 23 JAN 2025

SC-3, 26 DEC 2024 to 23 JAN 2025