

HI-VOR or TACAN RWY 34L

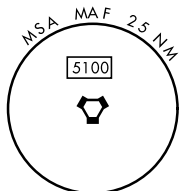
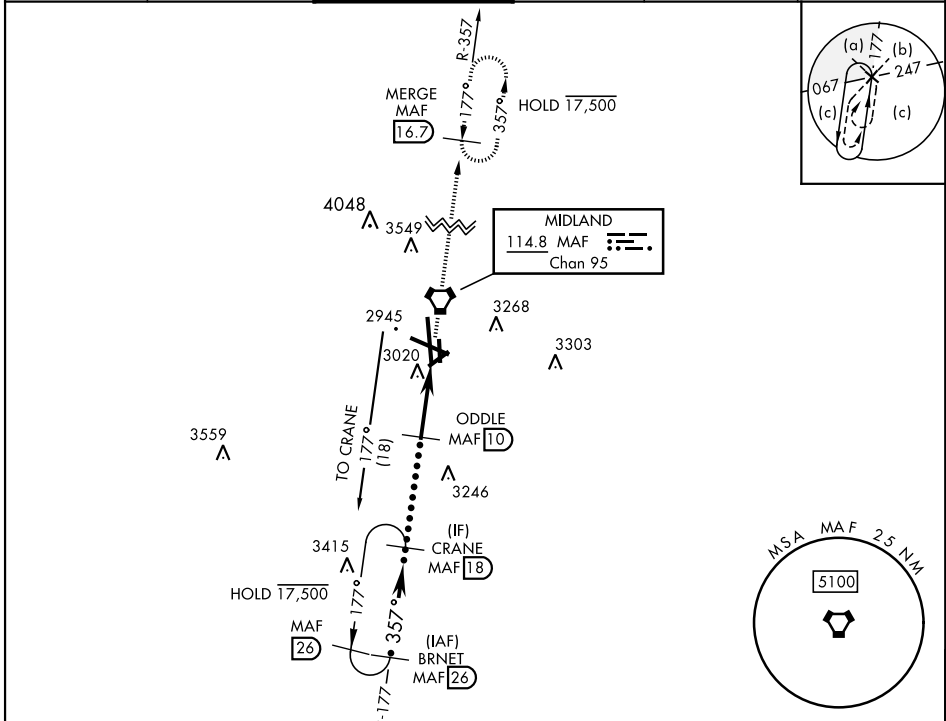
AL-258 [USAF] MIDLAND INTL AIR AND SPACE PORT (KMAF)

VORTAC MAF 114.8 Chan 95	APCH CRS 357°	Rwy Idg TDZE Arprt Elev 9501 2858 2872
--	-------------------------	--

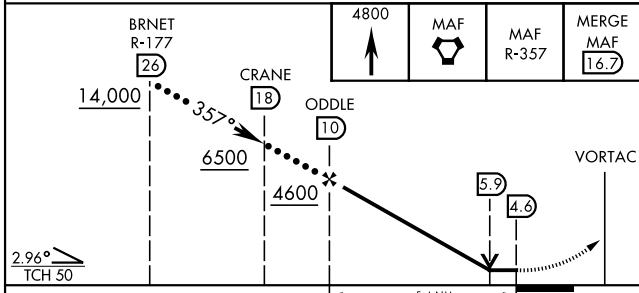
DME required.
* Circling Rwy 16L NA at night

MISSED APPROACH: Climb to 4800 direct MAF VORTAC and on MAF VORTAC R-357 to MERGE/MAF 16.7 DME and hold.

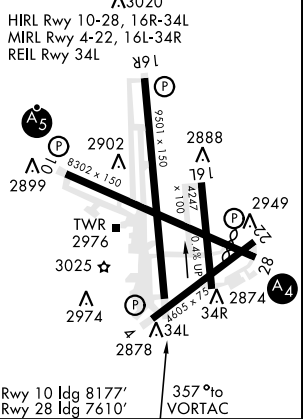
ATIS ★ 126.8 235.975	APP CON 124.6 290.4	TOWER ★ 118.7(CTAF) 273.45	GND CON 121.9 348.6	CLNC DEL 118.05 317.65	UNICOM 122.95
--------------------------------	-------------------------------	--------------------------------------	-------------------------------	----------------------------------	-------------------------



EMERG SAFE ALT 100 NM 7000



ELEV 2872	TDZE 2858
-----------	-----------



CATEGORY	C	D	E
S-34L	3320-1½	462 (500-1½)	
CIRCLING *	3440-1½ 568 (600-1½)	3520-2 648 (700-2)	3600-2½ 728 (800-2½)

Rwy 10 Idg 8177'
Rwy 28 Idg 7610'
357° to VORTAC

HI-VOR or TACAN RWY 34L

SC-3, 26 DEC 2024 to 23 JAN 2025

SC-3, 26 DEC 2024 to 23 JAN 2025