

WAAS CH 69310 W10A	APP CRS 105°	Rwy Idg TDZE 2869 Apt Elev 2872	8177
--	------------------------	---	-------------

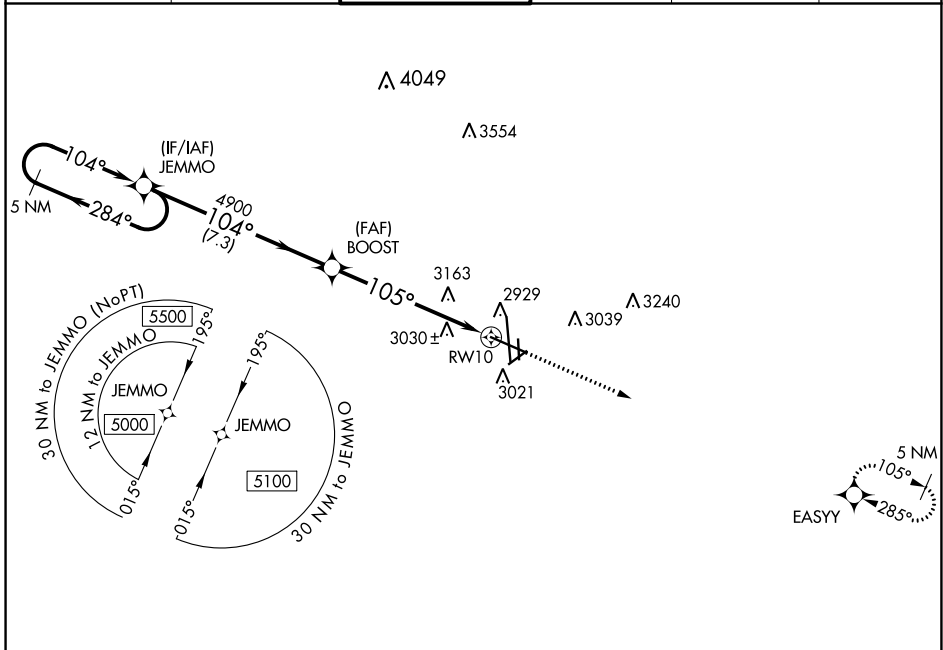
RNAV (GPS) RWY 10

MIDLAND INTL AIR AND SPACE PORT (M.A.F.)

▼ For uncompensated Baro-VNAV systems, LNAV/VNAV NA below -11°C (13°F) or above 25°C (77°F). Circling Rwy 16L NA at night. DME/DME RNP-0.3 NA.
 ** RVR 1800 authorized with use of FD or AP or HUD to DA.

MALSR MISSED APPROACH: Climb to 4700 direct EASY and hold.

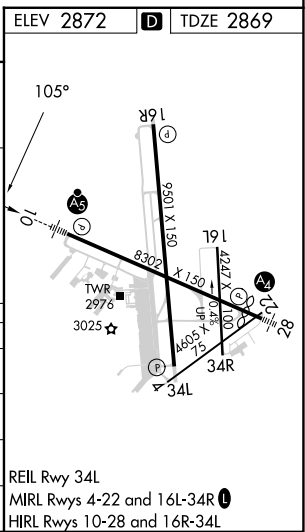
ATIS 126.8 235.975	MIDLAND APP CON* 124.6 290.4	MIDLAND TOWER* 118.7 (CTAF) 0 273.45	GND CON 121.9 348.6	CLNC DEL 118.05 317.65	UNICOM 122.95
------------------------------	--	--	-------------------------------	----------------------------------	-------------------------



SC-3, 26 DEC 2024 to 23 JAN 2025

SC-3, 26 DEC 2024 to 23 JAN 2025

5 NM Holding Pattern		4700 EASY	
JEMMO		BOOST	
5000 ← 284°		4900	
→ 104°		*1.8 NM to RW10	
GP 3.00° TCH 54		RW10	
4900		105°	
7.3 NM		4.4 NM	
CATEGORY		D	
LPV DA **		3069/24 200 (200-½)	
LNAV/VNAV DA		3394-1¼ 525 (600-1¼)	
LNAV MDA		3480/24 611 (700-½) 3480-1⅓ 611 (700-1⅓)	
CIRCLING		3480-1 608 (700-1) 3480-1¼ 608 (700-1¼) 3520-2 648 (700-2)	



REIL Rwy 34L
MIRL Rwy 4-22 and 16L-34R
HIRL Rwy 10-28 and 16R-34L