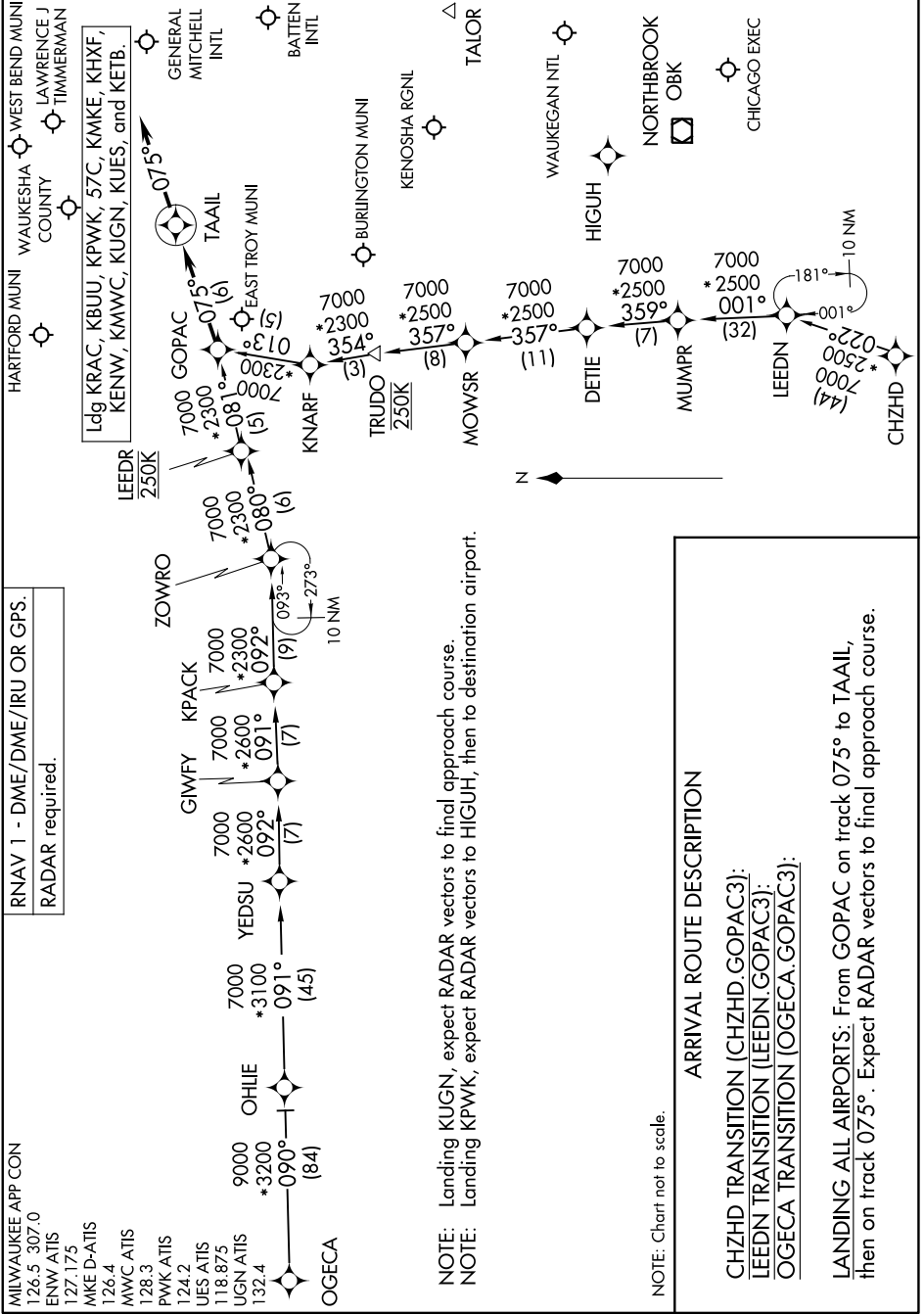


# GOPAC THREE ARRIVAL(RNAV)

AL-262 (FAA)

MILWAUKEE, WISCONSIN

EC-3, 26 DEC 2024 to 23 JAN 2025



RNAV 1 - DME/DME/IRU OR GPS.  
 RADAR required.

MILWAUKEE APP CON  
 126.5 307.0  
 ENW ATIS  
 127.175  
 MKE D-ATIS  
 126.4  
 MWC ATIS  
 128.3  
 PWK ATIS  
 124.2  
 UFS ATIS  
 118.875  
 UGN ATIS  
 132.4

**ARRIVAL ROUTE DESCRIPTION**

CHZHD TRANSITION (CHZHD.GOPAC3):  
LEEDN TRANSITION (LEEDN.GOPAC3):  
OGECA TRANSITION (OGECA.GOPAC3):

LANDING ALL AIRPORTS: From GOPAC on track 075° to TAAIL, then on track 075°. Expect RADAR vectors to final approach course.

EC-3, 26 DEC 2024 to 23 JAN 2025