

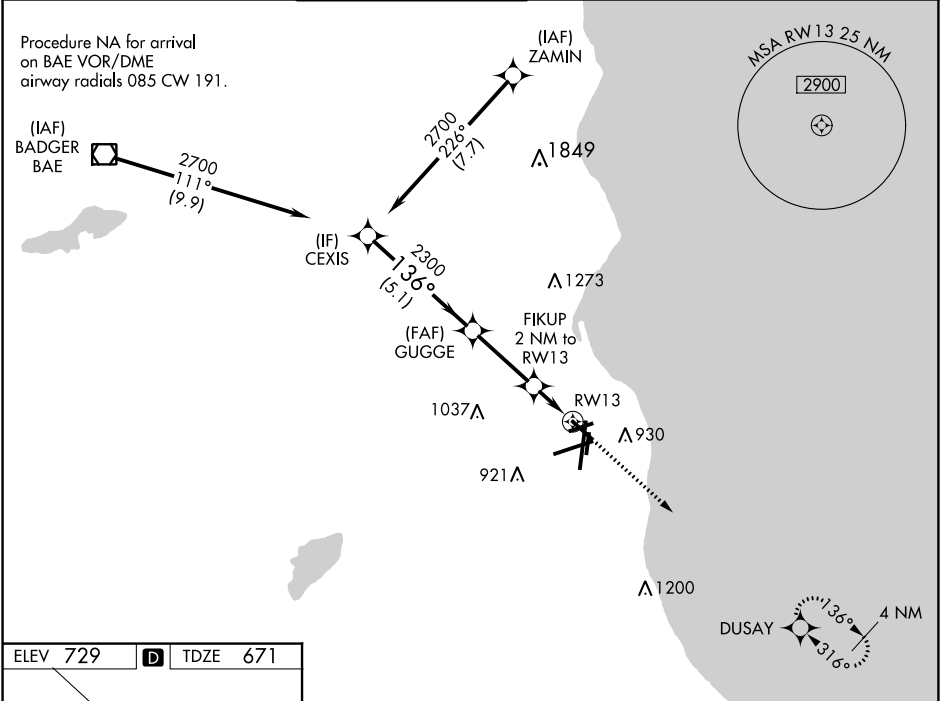
WAAS CH <b>99342</b> <b>W13A</b>	APP CRS <b>136°</b>	Rwy Idg TDZE Apt Elev	<b>4797</b> <b>671</b> <b>729</b>
----------------------------------------	------------------------	-----------------------------	-----------------------------------------

# RNAV (GPS) RWY 13

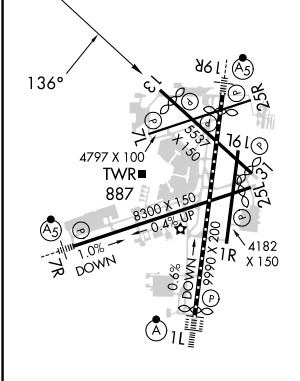
GENERAL MITCHELL INTL (MKE)

RNP APCH.		MISSED APPROACH: Climb to 2900 direct DUSAY and hold.	
<p><b>▼</b> Rwy 13 helicopter visibility reduction below <math>\frac{3}{4}</math> SM NA. For uncompensated Baro-VNAV systems, LNAV/VNAV NA below -19°C or above 54°C.</p>			

D-ATIS <b>126.4</b>	MILWAUKEE APP CON <b>126.5 307.0</b>	MILWAUKEE TOWER <b>124.575 269.05</b>	GND CON <b>121.8 263.125</b>	CLNC DEL <b>120.8</b>	CPDLC
------------------------	-----------------------------------------	------------------------------------------	---------------------------------	--------------------------	-------



ELEV <b>729</b>	<b>D</b>	TDZE <b>671</b>
-----------------	----------	-----------------



TDZ/CL Rwy 1L  
REIL Rws 1R, 7L,  
13, 25L, 25R, and 31  
HIRL Rws 1L-19R and 7R-25L  
MIRL Rws 1R-19L, 13-31, and 7L-25R

CEXIS	GUGGE	FIKUP 2 NM to RW13	RW13	DUSAY
2700	2300			2900
136°		*1360		
GP 3.00° TCH 54		*1.3 NM to RW13		
5.1 NM	3 NM	0.7 NM	1.3 NM	
CATEGORY	A	B	C	D
LPV DA	971-1		300 (300-1)	
LNAV/ VNAV DA	1189-1 $\frac{3}{8}$		518 (500-1 $\frac{3}{8}$ )	
LNAV MDA	1140-1	469 (500-1)	1140-1 $\frac{3}{8}$	469 (500-1 $\frac{3}{8}$ )
<b>C</b> CIRCLING	1240-1	511 (600-1)	1240-1 $\frac{1}{2}$ 511 (600-1 $\frac{1}{2}$ )	1360-2 631 (700-2)

EC-3, 26 DEC 2024 to 23 JAN 2025

EC-3, 26 DEC 2024 to 23 JAN 2025