

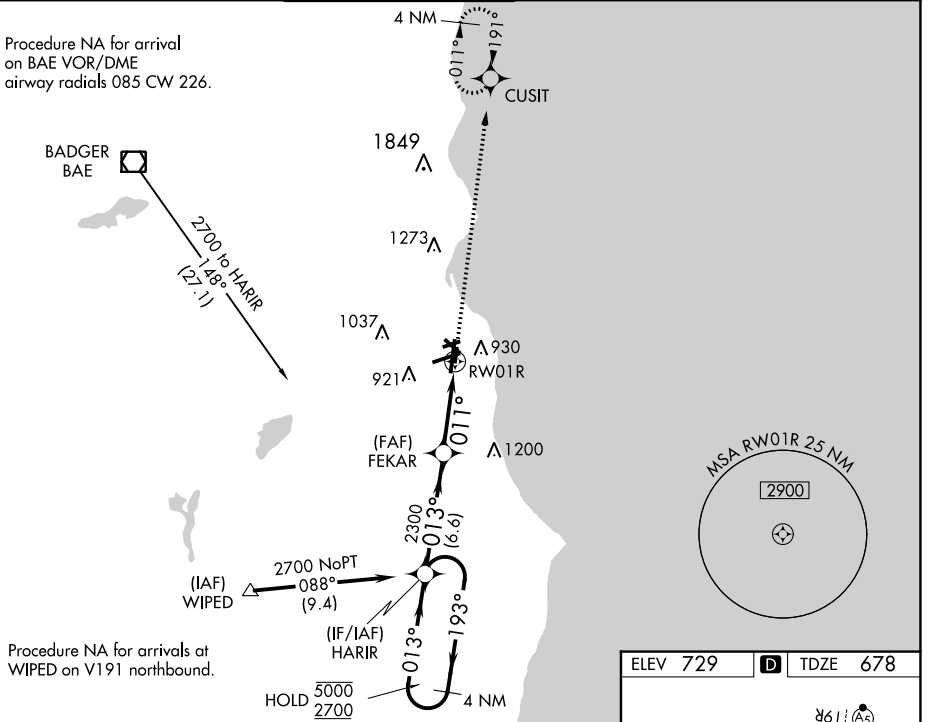
WAAS CH 97442 W01B	APP CRS 011°	Rwy Idg TDZE Apt Elev	4182 678 729
--	------------------------	-----------------------------	---

RNAV (GPS) RWY 1R

GENERAL MITCHELL INTL (MKE)

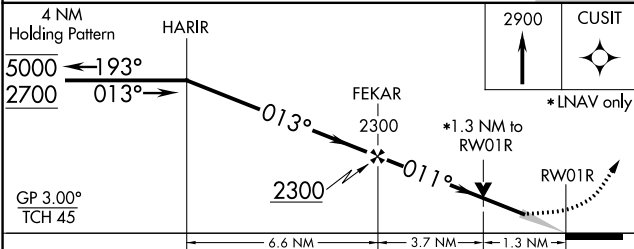
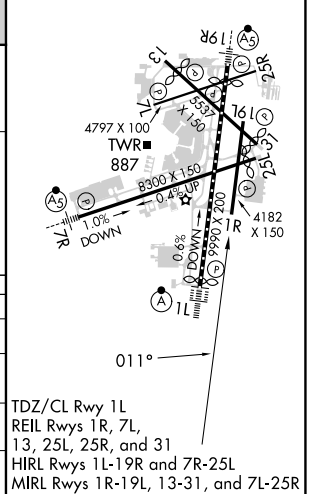
RNP APCH.			MISSED APPROACH: Climb to 2900 direct CUSIT and hold.		
▽ For uncompensated Baro-VNAV systems, LNAV/VNAV NA below -20°C or above 54°C.					
D-ATIS 126.4	MILWAUKEE APP CON 126.5 307.0	MILWAUKEE TOWER 124.575 269.05	GND CON 121.8 263.125	CLNC DEL 120.8	CPDLC

Procedure NA for arrival on BAE VOR/DME airway radials 085 CW 226.



Procedure NA for arrivals at WIPED on V191 northbound.

ELEV 729	D TDZE 678
----------	-------------------



CATEGORY	A	B	C	D
LPV DA	928-1		250 (200-1)	
LNAV/VNAV DA	1078-1½		400 (400-1½)	
LNAV MDA	1140-1 462 (500-1)		1140-1¾ 462 (500-1¾)	
C CIRCLING	1240-1 511 (600-1)		1240-1½ 511 (600-1½) 1360-2 631 (700-2)	