

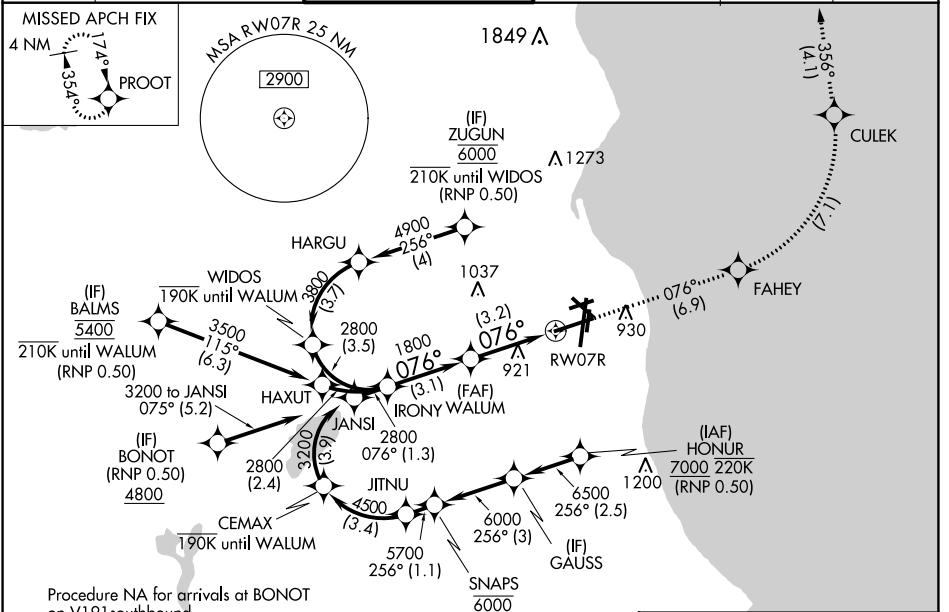
APP CRS	Rwy Idg	8012
076°	TDZE	729
	Apt Elev	729

RNAV (RNP) Y RWY 7R

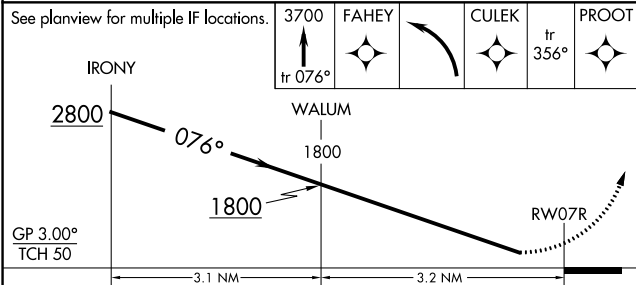
GENERAL MITCHELL INTL (MKE)

RF required. RNP AR APCH.		MALSR	MISSED APPROACH: Climb to 3700 on the RNAV missed approach route to PROOT and hold.
<p>▼ For uncompensated Baro-VNAV systems, procedure NA below -20°C or above 54°C. For inop ALS, increase RNP 0.10 all Cats visibility to 1¼. For inop ALS, increase RNP 0.15 all Cats visibility to 1½. For inop ALS, increase RNP 0.30 all Cats visibility to 1¾.</p>			

D-ATIS	MILWAUKEE APP CON	MILWAUKEE TOWER	GND CON	CLNC DEL	CPDLC
126.4	126.5 307.0	124.575 269.05	121.8 263.125	120.8	



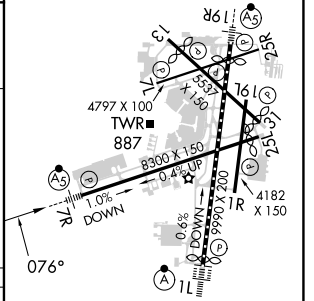
See planview for multiple IF locations.	3700	FAHEY	CULEK	tr 356°	PROOT
	↑				



CATEGORY	A	B	C	D
RNP 0.10 DA		1119/45	390 (400-¾)	
RNP 0.15 DA		1203/60	474 (500-1¼)	
RNP 0.30 DA		1255-1¾	526 (600-1¾)	

AUTHORIZATION REQUIRED

ELEV 729	D	TDZE 729
----------	----------	----------



TDZ/CL Rwy 1L
REIL Rwy 1R, 7L,
13, 25L, 25R, and 31
HIRL Rwy 1L-19R and 7R-25L
MIRL Rwy 1R-19L, 13-31 and 7L-25R

EC-3, 26 DEC 2024 to 23 JAN 2025

EC-3, 26 DEC 2024 to 23 JAN 2025