

(ORSKY3.ORSKY) 23334  
**ORSKY THREE DEPARTURE**

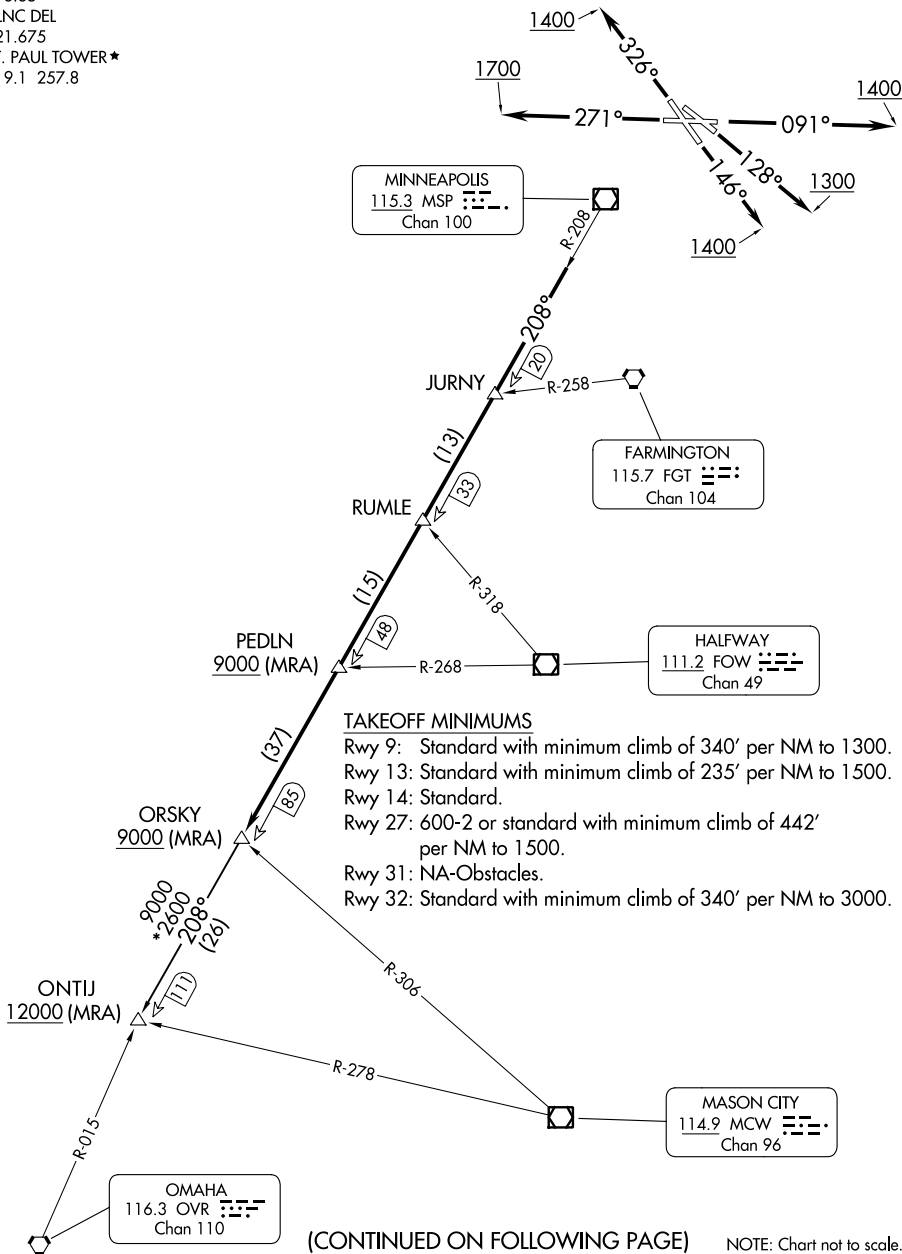
AL-263 (FAA)

ST PAUL DOWNTOWN HOLMAN FLD (STP)  
 ST PAUL, MINNESOTA

MINNEAPOLIS DEP CON  
 121.2 335.65  
 ATIS  
 118.35  
 CLNC DEL  
 121.675  
 ST. PAUL TOWER★  
 119.1 257.8

RADAR required.

**TOP ALTITUDE:  
 ASSIGNED BY ATC**



NC-1, 26 DEC 2024 to 23 JAN 2025

NC-1, 26 DEC 2024 to 23 JAN 2025

(CONTINUED ON FOLLOWING PAGE)

NOTE: Chart not to scale.

(ORSKY3.ORSKY) 08SEP22  
**ORSKY THREE DEPARTURE**

ST PAUL, MINNESOTA  
 ST PAUL DOWNTOWN HOLMAN FLD (STP)



DEPARTURE ROUTE DESCRIPTION

TAKEOFF RUNWAY 9: Climb on heading 091° to 1400 for RADAR vectors to assigned fix on MSP R-208, then on depicted route to ORSKY. Thence . . . .

TAKEOFF RUNWAY 13: Climb on heading 128° to 1300 for RADAR vectors to assigned fix on MSP R-208, then on depicted route to ORSKY. Thence . . . .

TAKEOFF RUNWAY 14: Climb on heading 146° to 1400 for RADAR vectors to assigned fix on MSP R-208, then on depicted route to ORSKY. Thence . . . .

TAKEOFF RUNWAY 27: Climb on heading 271° to 1700 for RADAR vectors to assigned fix on MSP R-208, then on depicted route to ORSKY. Thence . . . .

TAKEOFF RUNWAY 32: Climb on heading 326° to 1400 for RADAR vectors to assigned fix on MSP R-208, then on depicted route to ORSKY. Thence . . . .

. . . .on transition or assigned route. Expect filed altitude 10 minutes after departure.

ONTIJ TRANSITION (ORSKY3.ONTIJ): From over ORSKY INT on MSP R-208 to ONTIJ INT.

NC-1, 26 DEC 2024 to 23 JAN 2025

NC-1, 26 DEC 2024 to 23 JAN 2025