

(RST1.RST) 23334

ROCHESTER ONE DEPARTURE

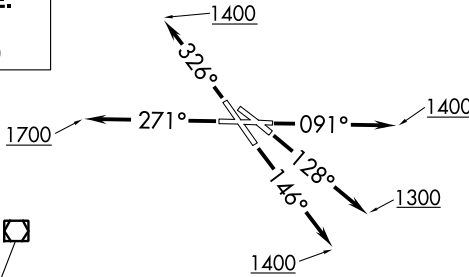
AL-263 (FAA)

ST PAUL DOWNTOWN HOLMAN FLD (STP)

ST. PAUL, MINNESOTA

**TOP ALTITUDE:
(JETS) 7000/
(PROPS) 5000**

MINNEAPOLIS DEP CON
121.2 284.7
ATIS 118.35
CLNC DEL
121.675
ST. PAUL TOWER *
119.1 257.8



FLYING CLOUD
117.7 FCM
Chan 124

FARMINGTON
115.7 FGT
Chan 104

HALFWAY
111.2 FOW
Chan 49

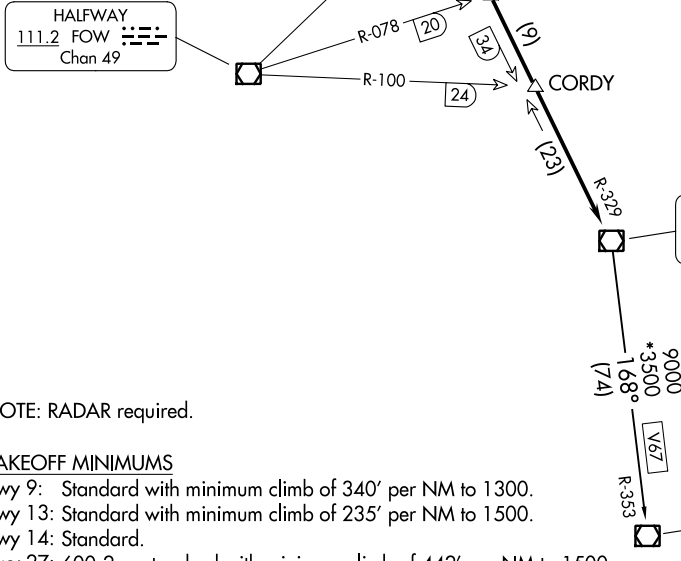
FOBUG
4000

DOKTR

CORDY

ROCHESTER
112.0 RST
Chan 57

WATERLOO
112.2 ALO
Chan 59



NOTE: RADAR required.

TAKEOFF MINIMUMS

- Rwy 9: Standard with minimum climb of 340' per NM to 1300.
- Rwy 13: Standard with minimum climb of 235' per NM to 1500.
- Rwy 14: Standard.
- Rwy 27: 600-2 or standard with minimum climb of 442' per NM to 1500.
- Rwy 31: NA - Obstacles.
- Rwy 32: Standard with minimum climb of 340' per NM to 3000.

(CONTINUED ON FOLLOWING PAGE)

NOTE: Chart not to scale.

ROCHESTER ONE DEPARTURE

(RST1.RST) 13SEP18

ST. PAUL, MINNESOTA

ST PAUL DOWNTOWN HOLMAN FLD (STP)

NC-1, 26 DEC 2024 to 23 JAN 2025

NC-1, 26 DEC 2024 to 23 JAN 2025



DEPARTURE ROUTE DESCRIPTION

TAKEOFF RUNWAY 9: Climb heading 091° to 1400 for RADAR vectors to FGT VORTAC then on FGT R-147 and RST R-329 to RST VOR/DME. Cross FOBUG INT/FGT 14 DME at or above 4000, thence

TAKEOFF RUNWAY 13: Climb heading 128° to 1300 for RADAR vectors to FGT VORTAC then on FGT R-147 and RST R-329 to RST VOR/DME. Cross FOBUG INT/FGT 14 DME at or above 4000, thence

TAKEOFF RUNWAY 14: Climb heading 146° to 1400 for RADAR vectors to FGT VORTAC then on FGT R-147 and RST R-329 to RST VOR/DME. Cross FOBUG INT/FGT 14 DME at or above 4000, thence

TAKEOFF RUNWAY 27: Climb heading 271° to 1700 for RADAR vectors to FGT VORTAC then on FGT R-147 and RST R-329 to RST VOR/DME. Cross FOBUG INT/FGT 14 DME at or above 4000, thence

TAKEOFF RUNWAY 32: Climb heading 326° to 1400 for RADAR vectors to FGT VORTAC then on FGT R-147 and RST R-329 to RST VOR/DME. Cross FOBUG INT/FGT 14 DME at or above 4000, thence

. . . .on assigned transition or assigned route. Expect clearance to filed altitude/flight level 10 (ten) minutes after departure.

WATERLOO TRANSITION (RST1.ALO): From over RST VOR/DME on RST R-168 and ALO R-353 to ALO VOR/DME.

NC-1, 26 DEC 2024 to 23 JAN 2025

NC-1, 26 DEC 2024 to 23 JAN 2025