

MINNEAPOLIS DEP CON
SOUTH/EAST 124.7 284.7
NORTH/WEST 125.75 335.65
D-ATIS DEP 120.8
CLNC DEL 133.2
CPDLC
MINNEAPOLIS TOWER
123.95 273.55 (12L-30R)
126.7 273.55 (12R-30L, 4-22)
123.675 273.55 (17-35)

TAKEOFF MINIMUMS:
Rwys 4, 12R, 17, 22, 30L/R: Standard.
Rwy 12L: 300-1½ or standard with minimum climb of 207' per NM to 1100, or alternatively, with standard takeoff minimums and a normal 200' per NM climb gradient, takeoff must occur no later than 1300' prior to DER.
Rwy 35: Standard with minimum climb of 219' per NM to 2100.

**TOP ALTITUDE:
(JETS) 7000/
(PROPS) 5000**

GOPHER
117.3 GEP :--
Chan 120

Rwy 30L/R
(For assigned 220° CW 360°)
3500

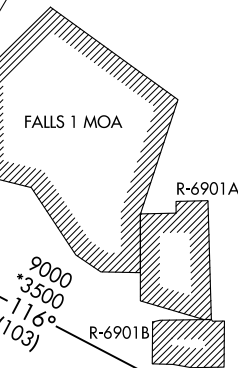
Rwy 17
(For assigned 230° CW 285°)
3500

FLYING CLOUD
117.Z FCM :--
Chan 124

MINNEAPOLIS
115.3 MSP :--
Chan 100

FARMINGTON
115.7 FGT :--
Chan 104

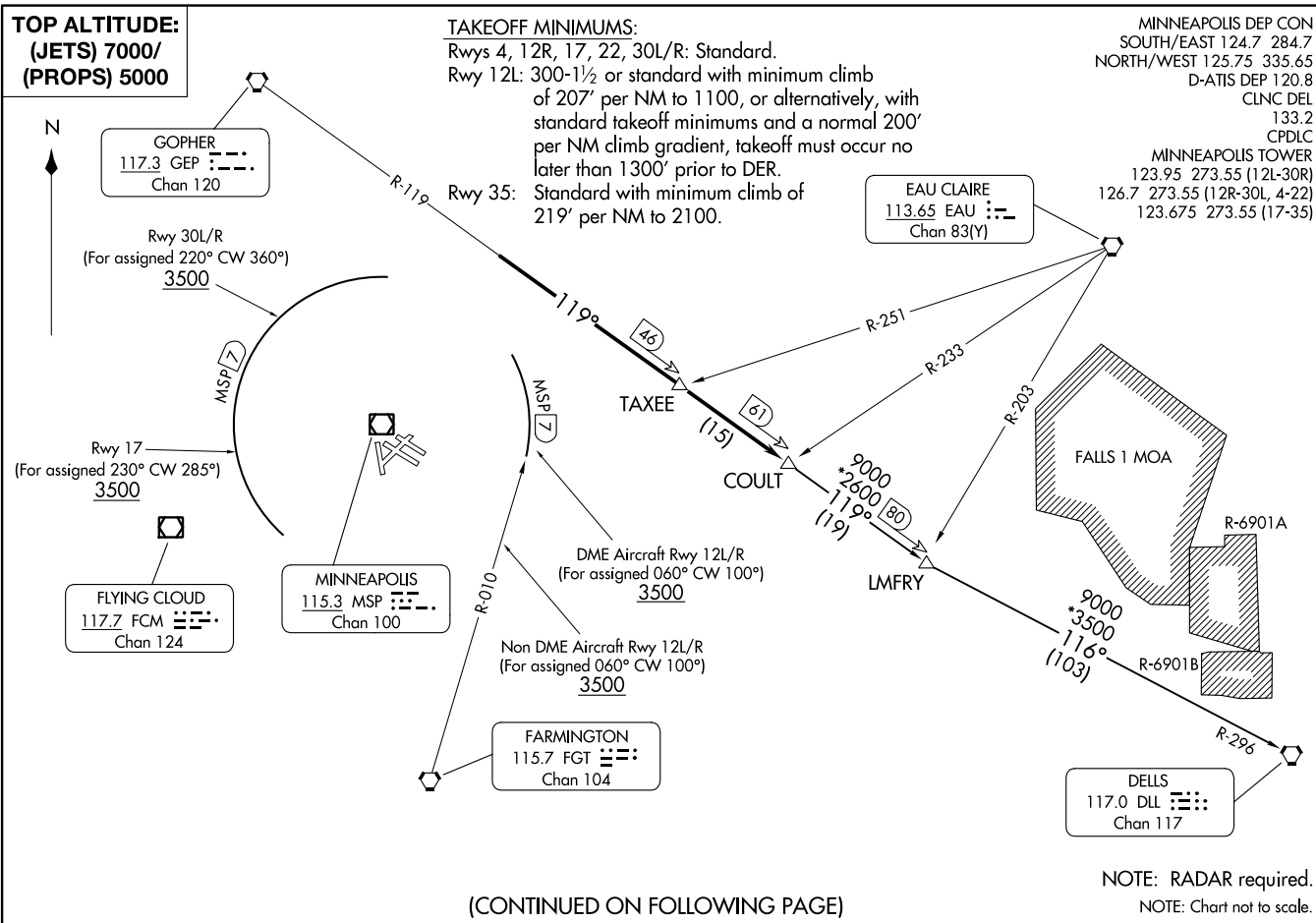
EAU CLAIRE
113.65 EAU :--
Chan 83(Y)



DELLS
117.0 DLL :--
Chan 117

NOTE: RADAR required.
NOTE: Chart not to scale.

(CONTINUED ON FOLLOWING PAGE)



COULT SEVEN DEPARTURE



DEPARTURE ROUTE DESCRIPTION

TAKEOFF ALL RUNWAYS: Fly assigned heading for RADAR vectors to intercept GEP R-119 to COULT INT/GEP 61 DME. Turbojet aircraft maintain 7000 or lower assigned altitude, all other aircraft maintain 5000 or lower assigned altitude.

DME EQUIPPED AIRCRAFT RUNWAYS 12L/R DEPARTURES: For assigned headings from 060° clockwise to 100°. Cross MSP 7 DME at or above 3500, maintain assigned altitude. If unable to comply, advise ATC as soon as possible prior to departure. Thence

NON-DME EQUIPPED AIRCRAFT RUNWAYS 12L/R DEPARTURES: For assigned headings from 060° clockwise to 100°, cross FGT R-010 at or above 3500, maintain assigned altitude. If unable to comply, advise ATC as soon as possible prior to departure. Thence

TAKEOFF RUNWAY 17: For assigned headings from 230° clockwise to 285°. Cross MSP 7 DME at or above 3500, maintain assigned altitude. If unable to comply, advise ATC as soon as possible prior to departure. Thence

TAKEOFF RUNWAYS 30L/R: For assigned headings from 220° clockwise to 360°, cross MSP 7 DME at or above 3500, maintain assigned altitude. If unable to comply, advise ATC as soon as possible prior to departure. Thence

TAKEOFF RUNWAYS 4, 22, 35: Initially assigned heading, thence

. . . . on transition or assigned route. Expect clearance to filed altitude/flight level 10 (ten) minutes after departure.

DELLS TRANSITION (COULT7.DLL): From over COULT INT on GEP R-119 to LMFYR INT then on DLL R-296 to DLL VORTAC.

NC-1, 26 DEC 2024 to 23 JAN 2025

NC-1, 26 DEC 2024 to 23 JAN 2025