

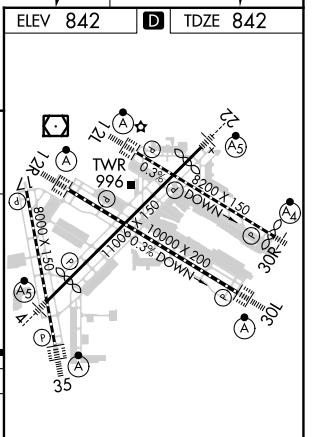
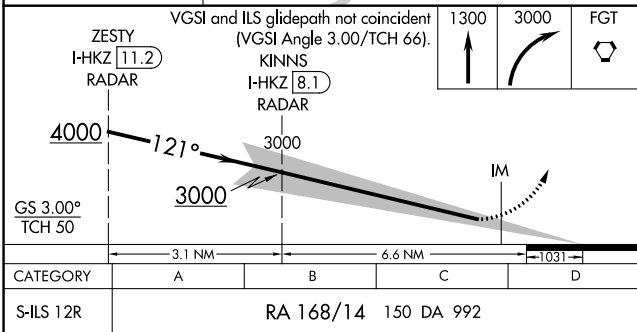
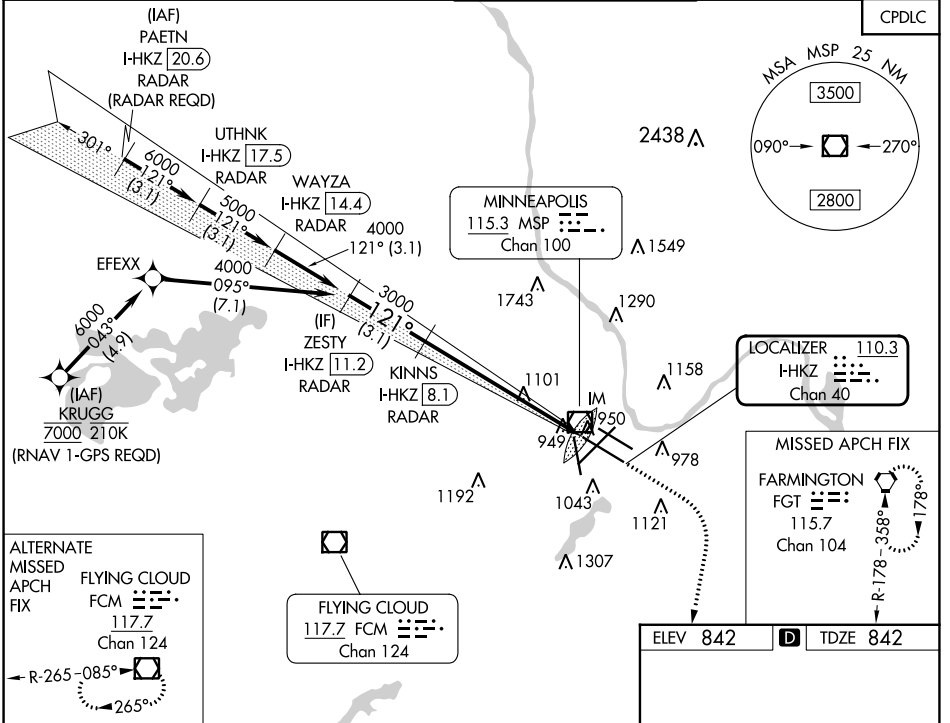
LOC/DME I-HKZ <b>110.3</b> Chan <b>40</b>	APP CRS <b>121°</b>	Rwy ldg <b>10000</b> TDZE <b>842</b> Apt Elev <b>842</b>
---	------------------------	--

# ILS RWY 12R (SA CAT I)

MINNEAPOLIS-ST PAUL INTL/WOLD-CHAMBERLAIN (MSP)

<b>⚠</b> DME or RADAR required. Simultaneous approach authorized with Rwy 12L. Requires specific OPSPEC, MSPEC, or LOA approval and use of HUD to DH.	ALSIF-2	MISSED APPROACH: Climb to 1300 then climbing right turn to 3000 direct FGT VORTAC and hold.
---	---------	---

D-ATIS ARR <b>135.35 239.275</b> DEP <b>120.8</b>	MINNEAPOLIS APP CON <b>118.725 335.65</b> (Rwy 35) <b>119.3 335.65</b> (12L-30R, 4-22, 17) <b>126.95 335.65</b> (12R-30L)	MINNEAPOLIS TOWER <b>123.675 273.55</b> (17-35) <b>123.95 273.55</b> (12L-30R) <b>126.7 273.55</b> (12R-30L, 4-22)	GND CON <b>N 121.8 348.6</b> <b>S 121.9 348.6</b> <b>W 127.925 348.6</b>	CLNC DEL <b>133.2</b>
---	--	---	---	--------------------------



**SA CATEGORY I ILS - SPECIAL AIRCREW & AIRCRAFT CERTIFICATION REQUIRED**

HIRL all Rwws  
REIL Rwy 17  
TDZ/CL Rwws 12L, 12R, 30L, and 35

NC-1, 26 DEC 2024 to 23 JAN 2025

NC-1, 26 DEC 2024 to 23 JAN 2025

# ILS RWY 12R (SA CAT I)