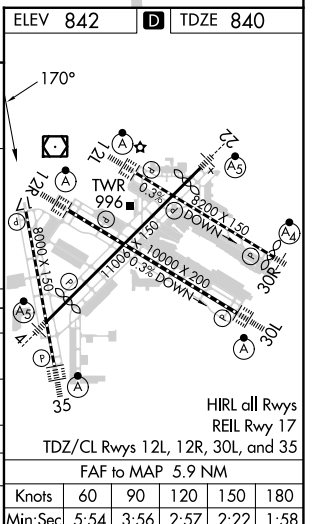
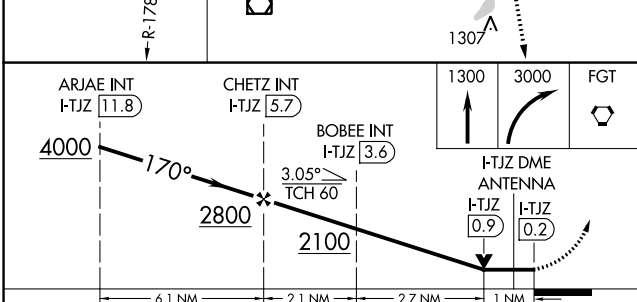
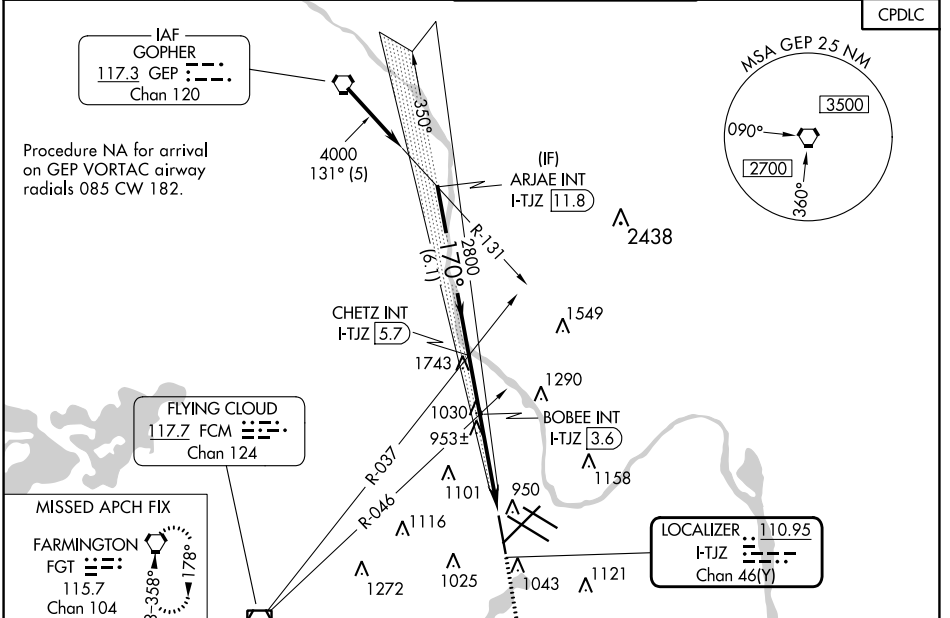


LOC/DME I-TJZ <b>110.95</b> Chan 46(Y)	APP CRS <b>170°</b>	Rwy Idg 8000	TDZE 840
		Apt Elev 842	

# LOC RWY 17

MINNEAPOLIS-ST PAUL INTL/WOLD-CHAMBERLAIN (MSP)

<p><b>⚠</b> Helicopter visibility reduction below RVR 4000 NA.</p>		<p>MISSED APPROACH: Climb to 1300 then climbing right turn to 3000 direct FGT VORTAC and hold.</p>		
D-ATIS ARR <b>135.35</b> 239.275 DEP <b>120.8</b>	MINNEAPOLIS APP CON <b>118.725 335.65</b> (Rwy 35) <b>119.3 335.65</b> (12L-30R, 4-22, 17) <b>126.95 335.65</b> (12R-30L)	MINNEAPOLIS TOWER <b>123.675 273.55</b> (17-35) <b>123.95 273.55</b> (12L-30R) <b>126.7 273.55</b> (12R-30L, 4-22)	GND CON <b>N 121.8 348.6</b> <b>S 121.9 348.6</b> <b>W 127.925 348.6</b>	CLNC DEL <b>133.2</b>



CATEGORY	A	B	C	D
S-17	2100/60 1260 (1300-1½)	2100-1½ 1260 (1300-1½)	2100-3	1260 (1300-3)
<b>C</b> CIRCLING	2100-1¼ 1258 (1300-1¼)	2100-1½ 1258 (1300-1½)	2100-3	1258 (1300-3)
BOBEE FIX MINIMUMS (DUAL VOR RECEIVERS OR DME REQUIRED)				
S-17	1220/55		380 (400-1)	
<b>C</b> CIRCLING	1360-1	518 (600-1)	1460-1¾ 618 (700-1¾)	1660-2¾ 818 (900-2¾)

# LOC RWY 17

NC-1, 26 DEC 2024 to 23 JAN 2025

NC-1, 26 DEC 2024 to 23 JAN 2025