

RNAV (RNP) Y RWY 12R

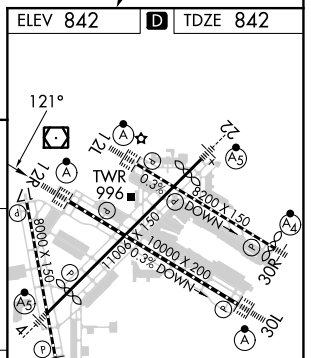
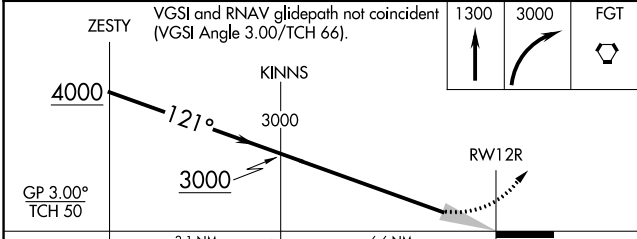
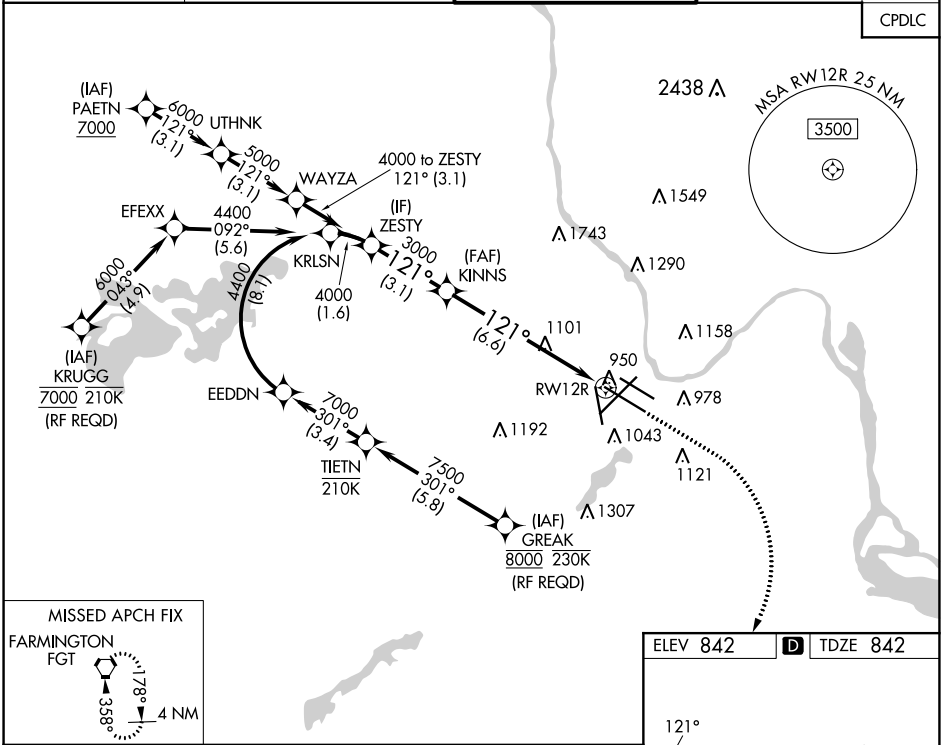
MINNEAPOLIS-ST PAUL INTL/WOLD-CHAMBERLAIN (MSP)

APP CRS	Rwy Idg	10000
121°	TDZE	842
	Apt Elev	842

▼ For uncompensated Baro-VNAV systems, procedure NA below -20°C (-4°F) or above 54°C (130°F). Simultaneous approach authorized with Rwy 12L. GPS required. For inop ALS, increase RNP 0.15 all Cats visibility to RVR 6000.

ALS F-2 MISSED APPROACH: Climb to 1300 then climbing right turn to 3000 direct FGT VORTAC and hold.

D-ATIS	MINNEAPOLIS APP CON	MINNEAPOLIS TOWER	GND CON	CLNC DEL
ARR 135.35 239.275	118.725 335.65 (Rwy 35)	123.675 273.55 (17-35)	N 121.8 348.6	133.2
DEP 120.8	119.3 335.65 (12L-30R, 4-22, 17)	123.95 273.55 (12L-30R)	S 121.9 348.6	
	126.95 335.65 (12R-30L)	126.7 273.55 (12R-30L, 4-22)	W 127.925 348.6	



GP 3.00° TCH 50	3.1 NM	6.6 NM		
CATEGORY	A	B	C	D
RNP 0.15 DA		1191/40	349 (400-¾)	
RNP 0.30 DA		1251/45	409 (500-¾)	

AUTHORIZATION REQUIRED

HIRL all Rwys
REIL Rwy 17
TDZ/CL Rwys 12L, 12R, 30L, and 35

NC-1, 26 DEC 2024 to 23 JAN 2025

NC-1, 26 DEC 2024 to 23 JAN 2025