

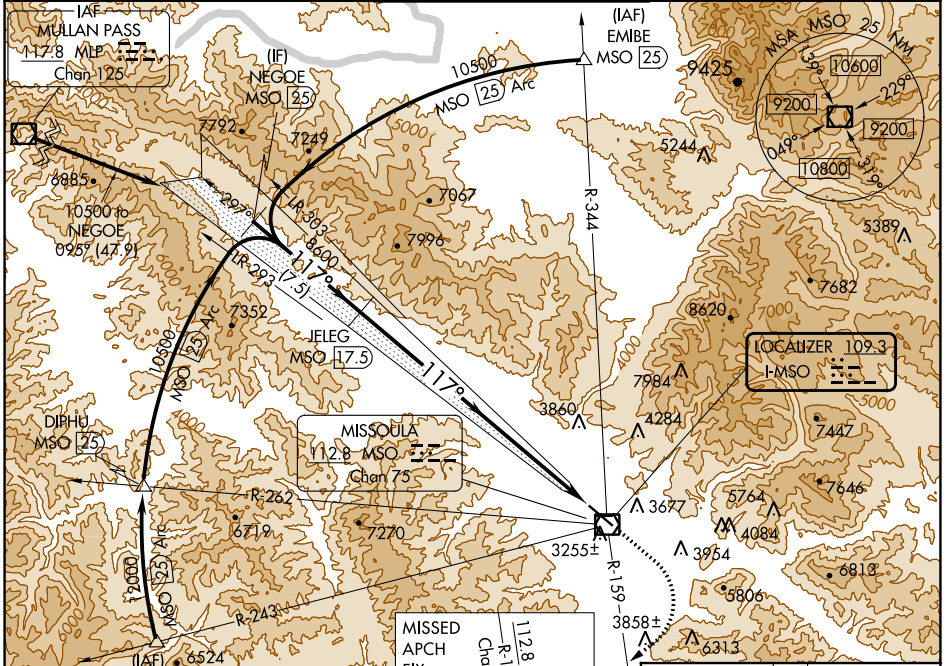
LOC I-MSO 109.3	APP CRS 117°	Rwy ldg TDZE Apt Elev	9501 3200 3206
---------------------------	------------------------	-----------------------------	---

ILS Z RWY 12

MISSOULA MONTANA (MISO)

DME required.	MALSRR 	MISSED APPROACH: Climb to 3620 then climbing right turn to 10300 on MSO VOR/DME R-159 to JEPSN/MISO 26.5 DME and hold. Missed approach requires minimum climb of 410 feet per NM to 9800; if unable to meet climb gradient, see ILS Y RWY 12.
---------------	------------	---

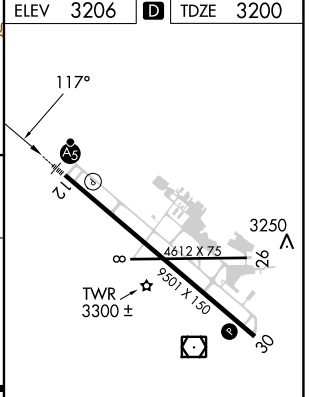
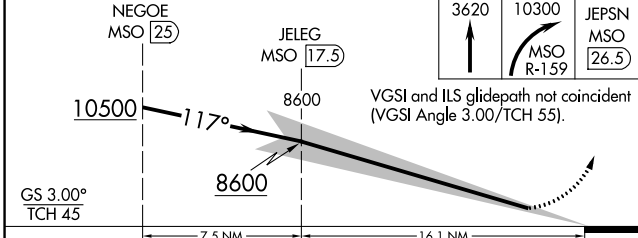
ATIS 126.65	SPOKANE APP CON * 124.9 298.95	MISSOULA TOWER * 118.4 (CTAF) 377.175	GND CON 121.9	UNICOM 122.95
-----------------------	--	---	-------------------------	-------------------------



NW-1, 26 DEC 2024 to 23 JAN 2025

NW-1, 26 DEC 2024 to 23 JAN 2025

ELEV 3206	TDZE 3200
-----------	-----------



CATEGORY	A	B	C	D
S-ILS 12		3411/24	211 (300-1/2)	