

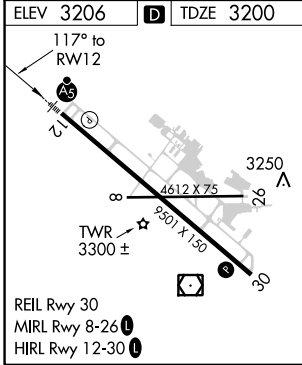
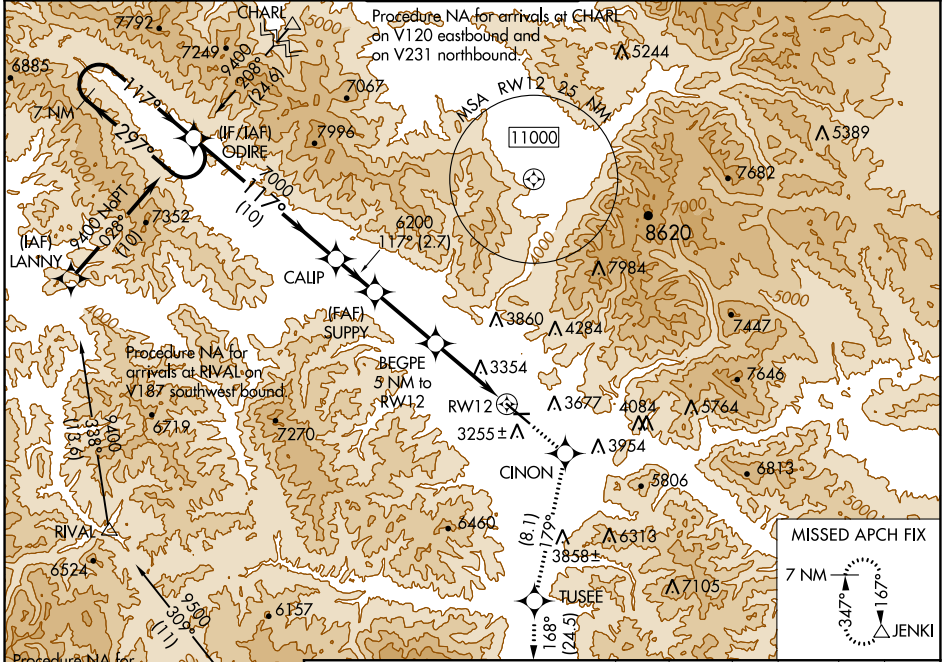
WAAS CH 65715 W12B	APP CRS 117°	Rwy Idg TDZE Apt Elev	9501 3200 3206
--	------------------------	-----------------------------	---

RNAV (GPS) Y RWY 12

MISSOULA MONTANA (MISO)

RNP APCH.	MALS R	MISSED APPROACH: (Do not exceed 200K until CINON) Climb to 12000 direct CINON and on track 179° to TUSEE and on track 168° to JENKI and hold, continue climb-in-hold to 12000. ## Missed approach requires minimum climb of 325 feet per NM to 7700.
<p>⚠ Circling N/A for Cats C and D northeast of Rwy 12-30. Inop table does not apply to LNAV # Cats C/D. Inop table does not apply to LPV † all Cats. **RVR 1800 authorized with use of FD or AP or HUD to DA.</p>		

ATIS 126.65	SPOKANE APP CON * 124.9 298.95	MISSOULA TOWER * 118.4 (CTAF) 377.175	GND CON 121.9	UNICOM 122.95
-----------------------	--	---	-------------------------	-------------------------



ELEV 3206	D	TDZE 3200	<p>7 NM Holding Pattern</p> <p>ODIRE</p> <p>CALIP</p> <p>SUPPLY</p> <p>BEGPE 5 NM to RW12</p> <p>CINON</p> <p>TUSEE tr 179°</p> <p>JENKI tr 168°</p> <p>*LNAV only</p> <p>*1.2 NM to RW12</p>				
GP 3.00°	TCH 55		10 NM	2.7 NM	4.3 NM	3.8 NM	1.2 NM
CATEGORY	A	B	C	D			
LPV DA **	3400/24		200 (200-½)				
LPV DA †	4229-4		1029 (1100-4)				
LNAV MDA ##	3640/24		440 (500-½)		3640/40 440 (500-¾)		
LNAV MDA #	4520/40 1320 (1400-¾)		4520/55 1320 (1400-1)		4520-3 1320 (1400-3)		
CIRCLING	4520-1¼ 1314 (1400-1¼)		4700-1½ 1494 (1500-½)		4700-3 5140-3 1934 (2000-3)		

NW-1, 26 DEC 2024 to 23 JAN 2025

NW-1, 26 DEC 2024 to 23 JAN 2025