

WAAS CH 42515 W13A	APP CRS 126°	Rwy Idg TDZE Apt Elev	7032 590 590
--	------------------------	-----------------------------	---

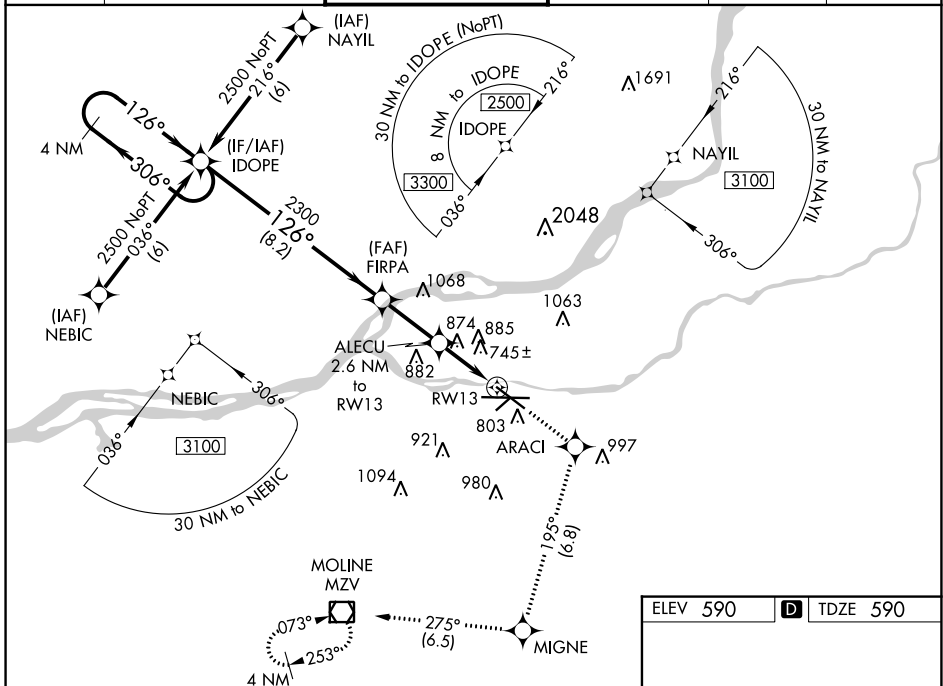
RNAV (GPS) RWY 13

QUAD CITIES INTL (MLI)

▼ Circling to Rwy 5 NA at night. For uncompensated Baro-VNAV systems, LNAV/VNAV NA below -16°C (4°F) or above 47°C (116°F). DME/DME RNP-0.3 NA. When local altimeter setting not received, use Davenport altimeter setting and increase LPV DA to 955 feet, LNAV/VNAV DA to 1339 feet and all MDA 60 feet; increase LPV all Cats, LNAV/VNAV all Cats, LNAV Cats C and D, and Circling Cats C and D visibility ¼ SM. Rwy 13 helicopter reduction below ¾ SM NA. VDP and Baro-VNAV NA when using Davenport altimeter setting.

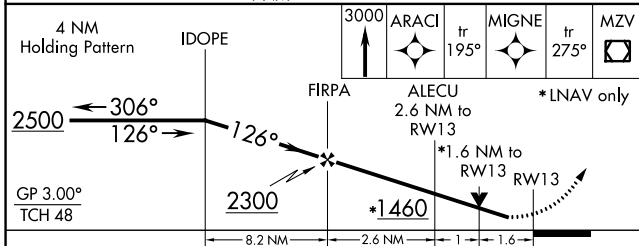
MISSED APPROACH: Climb to 3000 direct ARACI and on track 195° to MIGNE and on track 275° to MZV VOR/DME and hold.

ATIS 121.2	QUAD CITY APP CON * 125.95 257.8	QUAD CITY TOWER * 119.4(CTAF) 269.55	GND CON 121.9	CLNC DEL 124.05	UNICOM 122.95
----------------------	--	--	-------------------------	---------------------------	-------------------------

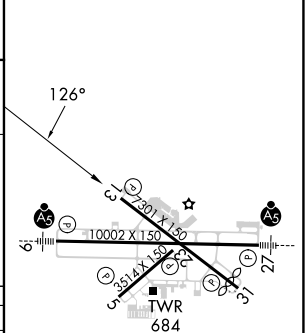


EC-3, 26 DEC 2024 to 23 JAN 2025

EC-3, 26 DEC 2024 to 23 JAN 2025



ELEV 590	D TDZE 590
----------	-------------------



CATEGORY	A	B	C	D
LPV DA	908-1 318 (400-1)			
LNAV/VNAV DA	1292-2½ 702 (800-2½)			
LNAV MDA	1140-1 550 (600-1)	1140-1½ 550 (600-1½)	1140-1¾ 550 (600-1¾)	1140-1¾ 550 (600-1¾)
CIRCLING	1140-1 550 (600-1)	1200-1 610 (700-1)	1320-2 730 (800-2)	1420-2¾ 830 (900-2¾)

HIRL Rwy 9-27 and 13-31
MIRL Rwy 5-23
REIL Rwy 13 and 31