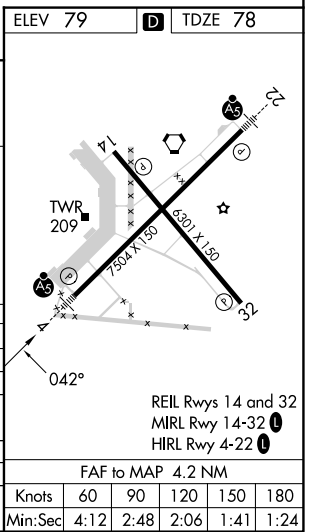
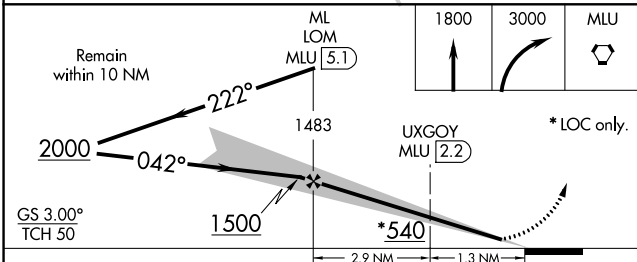
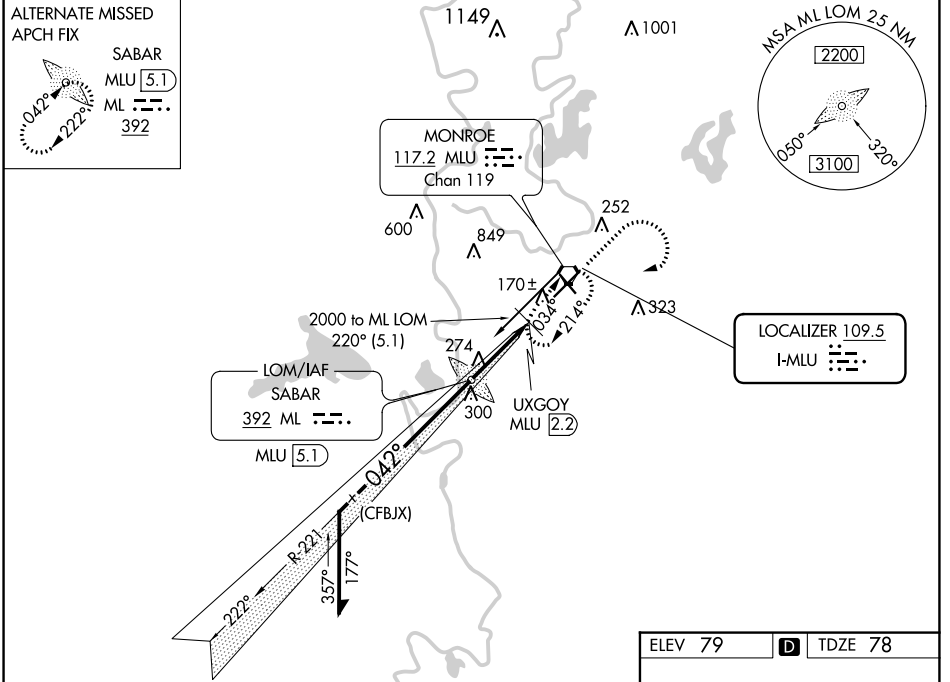


LOC I-MLU 109.5	APP CRS 042°	Rwy Idg 7504 TDZE 78 Apt Elev 79
---------------------------	------------------------	---

ILS or LOC RWY 4

MONROE RGNL (MLU)

ADF or DME required for procedure entry.		MALSR	MISSED APPROACH: Climb to 1800 then climbing right turn to 3000 direct MLU VORTAC and hold.		
<p>⚠ Circling Rwy 14 NA at night. For inop ALS, increase S-LOC 4 Cat C/D visibility to 1½ SM.</p> <p>⚠ UXGOY FIX MINIMUMS: For inop ALS, increase S-LOC 4 Cat C/D visibility to RVR 5500.</p> <p>ASR **RVR 1800 authorized with the use of FD or AP or HUD to DA.</p> <p># DME from MLU VORTAC.</p>					
ATIS 125.05	MONROE APP CON * 118.15 290.475	MONROE TOWER * 118.9 (CTAF) 0 257.8	GND CON 121.9	CLNC DEL 121.65	UNICOM 122.95



CATEGORY	A	B	C	D
S-ILS 4	**278/24 200 (200-½)			
S-LOC 4	540/24	462 (500-½)	540/50	462 (500-1)
CIRCLING	580-1	501 (600-1)	740-1¾ 661 (700-1¾)	1160-3 1081 (1100-3)
# UXGOY FIX MINIMUMS				
S-LOC 4	420/24	342 (400-½)	420/30	342 (400-¾)
CIRCLING	580-1	501 (600-1)	740-1¾ 661 (700-1¾)	1160-3 1081 (1100-3)

FAF to MAP 4.2 NM					
Knots	60	90	120	150	180
Min:Sec	4:12	2:48	2:06	1:41	1:24

SC-4, 26 DEC 2024 to 23 JAN 2025

SC-4, 26 DEC 2024 to 23 JAN 2025