

VORTAC MLU <b>117.2</b> Chan <b>119</b>	APP CRS <b>328°</b>	Rwy Idg TDZE Apt Elev	<b>6301</b> <b>76</b> <b>79</b>
---	------------------------	-----------------------------	---------------------------------------

# VOR RWY 32

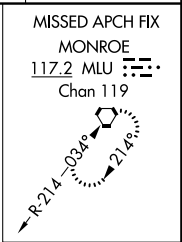
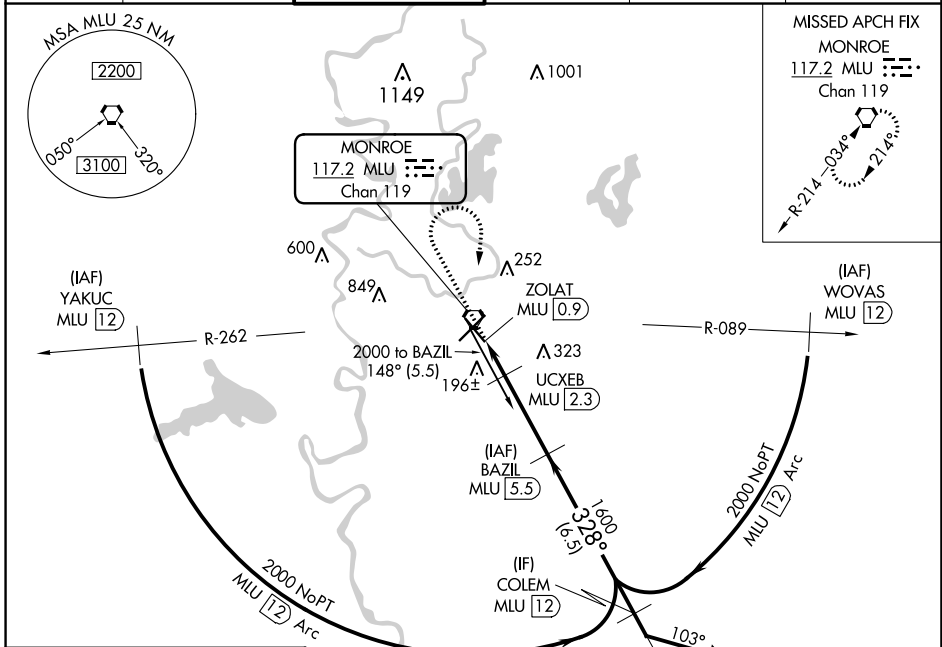
## MONROE RGNL (MLU)

DME required.

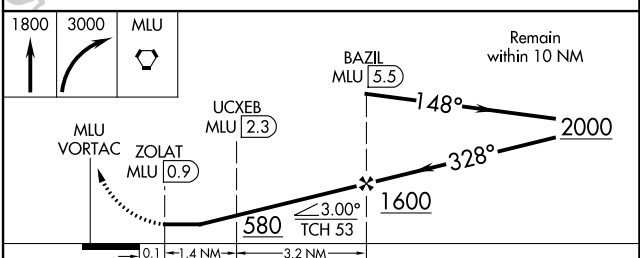
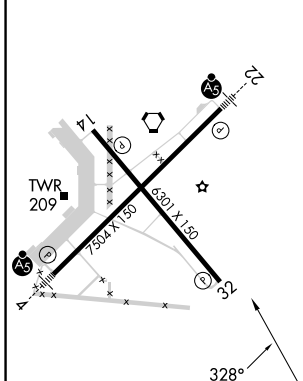
**ASR** Rwy 32 helicopter visibility reduction below 3/4 SM NA.  
Circling Rwy 14 NA at night.

MISSED APPROACH: Climb to 1800 then climbing right turn to 3000 direct MLU VORTAC and hold, continue climb-in-hold to 3000.

ATIS <b>125.05</b>	MONROE APP CON * <b>118.15 290.475</b>	MONROE TOWER * <b>118.9 (CTAF) 0 257.8</b>	GND CON <b>121.9</b>	CLNC DEL <b>121.65</b>	UNICOM <b>122.95</b>
-----------------------	---	---	-------------------------	---------------------------	-------------------------



ELEV 79	<b>D</b> TDZE 76
---------	------------------



CATEGORY	A	B	C	D
S-32	460-1	384 (400-1)	460-1 1/8	384 (400-1 1/8)
<b>C</b> CIRCLING	540-1 461 (500-1)	580-1 501 (600-1)	740-1 3/4 661 (700-1 3/4)	1160-3 1081 (1100-3)

REIL Rws 14 and 32  
MIRL Rwy 14-32  
HIRL Rwy 4-22

SC-4, 26 DEC 2024 to 23 JAN 2025

SC-4, 26 DEC 2024 to 23 JAN 2025