

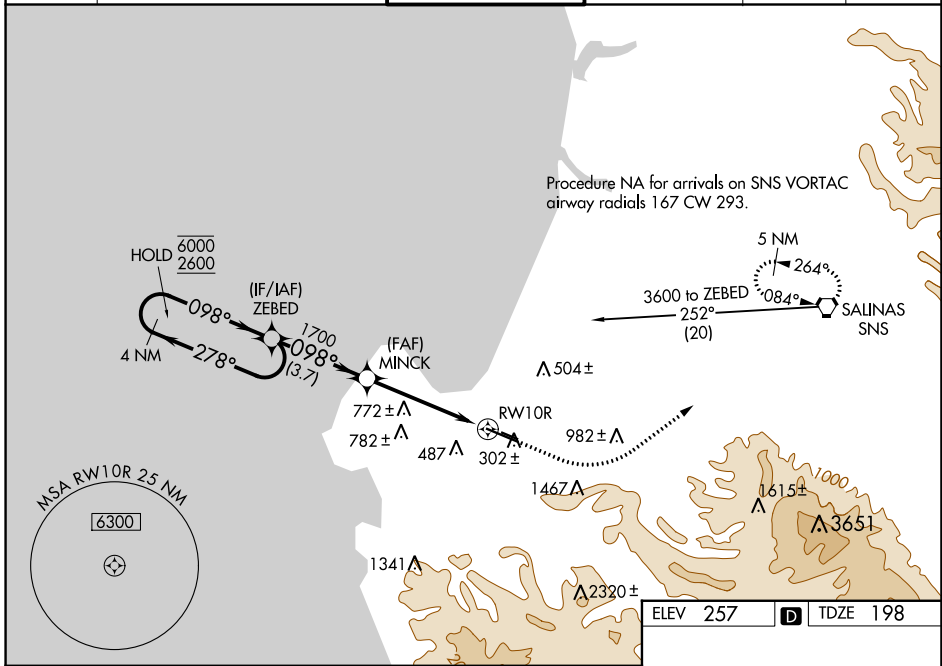
WAAS CH <b>69602</b> <b>W10A</b>	APP CRS <b>098°</b>	Rwy Idg TDZE <b>198</b> Apt Elev <b>257</b>	<b>7000</b>
--	------------------------	---	-------------

# RNAV (GPS) RWY 10R

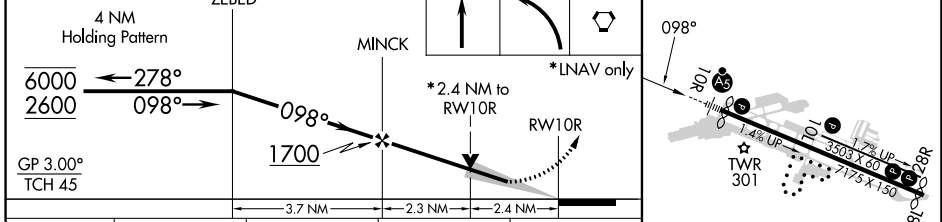
MONTEREY RGNL (MRY)

RNP APCH.	MALSR	MISSED APPROACH: Climb to 1000 then climbing left turn to 5000 direct SNS VORTAC and hold, continue climb-in-hold to 5000.
<p><b>⚠</b> Circling NA south of Rwy 10R and 28L. For uncompensated Baro-VNAV systems, LNAV/VNAV NA below 0°C or above 54°C. For inop ALS, increase LPV visibility all Cats to 1 7/8 SM, LNAV/VNAV visibility all Cats and LNAV Cat C/D to 2 1/2 SM.</p>		

ATIS <b>119.25</b>	NORCAL APP CON <b>133.0 251.15</b> (001°-135°) <b>127.15 307.125</b> (136°-360°)	MONTEREY TOWER ★ <b>118.4</b> (CTAF) <b>257.8</b>	GND CON <b>120.875 348.6</b>	CLNC DEL <b>135.45</b>	UNICOM <b>122.95</b>
-----------------------	--	--	---------------------------------	---------------------------	-------------------------



ELEV 257	D	TDZE 198
----------	---	----------



CATEGORY	A	B	C	D
LPV DA		718-1 1/2	520 (500-1 1/2)	
LNAV/VNAV DA		789-1 3/4	591 (600-1 3/4)	
LNAV MDA	980/24 782 (800-1/2)	980/40 782 (800-3/4)	980-1 3/4	782 (800-1 3/4)
CIRCLING	980-1 723 (800-1)	980-1 1/4 723 (800-1 1/4)	1280-3 1023 (1100-3)	NA

MIRL Rwy 10L-28R  
HIRL Rwy 10R-28L **Ⓛ**  
REIL Rwy 28L **Ⓛ**  
REIL Rwy 10L and 28R

SW-2, 26 DEC 2024 to 23 JAN 2025

SW-2, 26 DEC 2024 to 23 JAN 2025