

LOC I-DLV	APP CRS	Rwy Idg	<b>9020</b>
<b>108.5</b>	<b>277°</b>	TDZE	<b>197</b>
		Apt Elev	<b>221</b>

# ILS Y or LOC RWY 28

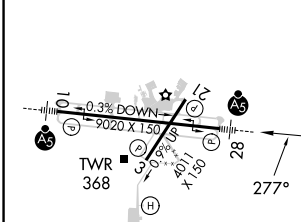
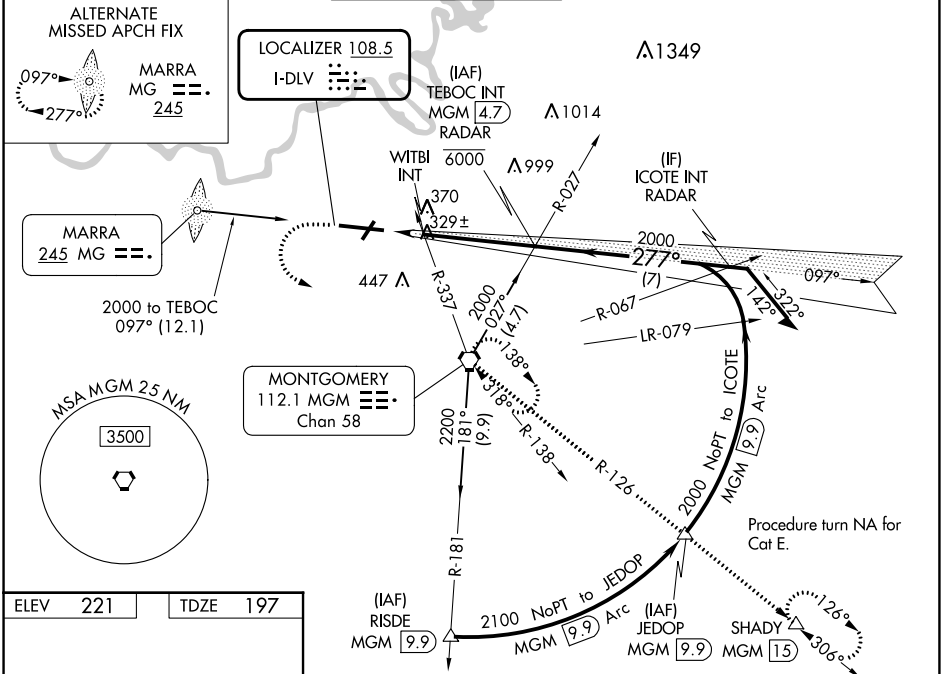
MONTGOMERY RGNL (DANNELLY FLD) (MGM)

**⚠** For inop ALS, increase S-ILS 28 Cat E visibility to ½ SM; S-LOC 28 Cat C/D/E visibility to 1 ¾ SM and increase WITBI fix minimums S-LOC 28 Cat E visibility to 1 ½ SM. Circling for Cat E NA north of Rwy 10-28.

**⚠** MALSR

MISSED APPROACH: Climb to 700 then climbing left turn to 3000 direct MGM VORTAC and hold, continue climb-in-hold to 3000 (TACAN aircraft continue climb to 3500 on MGM VORTAC R-126 to SHADY/MGM 15 DME and hold SE, RT, 306° inbound).

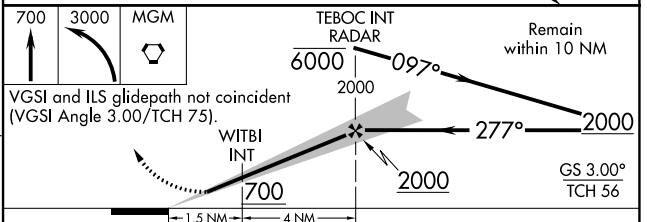
ATIS	MONTGOMERY APP CON *	DANNELLY TOWER *	GND CON	CLNC DEL	UNICOM
<b>120.675</b>	<b>124.0 363.025</b>	<b>119.7 (CTAF) 0 360.85</b>	<b>121.7 348.6</b>	<b>118.3 270.3</b>	<b>122.95</b>



REIL Rwy 3 **⓪**  
MIRL Rwy 3-21  
HIRL Rwy 10-28

FAF to MAP 5.5 NM

Knots	60	90	120	150	180
Min:Sec	5:30	3:40	2:45	2:12	1:50



CATEGORY	A	B	C	D	E
S-ILS 28	397-½		200 (200-½)		
S-LOC 28	700-½	503 (500-½)	700-1 503 (500-1)		
<b>C</b> CIRCLING	700-1	479 (500-1)	800-1½ 579 (600-1½)	860-2 639 (700-2)	860-2¼ 639 (700-2¼)
WITBI FIX MINIMUMS (DUAL VOR RECEIVERS REQUIRED)					
S-LOC 28	620-½	423 (400-½)	620-¾ 423 (400-¾)		
<b>C</b> CIRCLING	700-1	479 (500-1)	800-1½ 579 (600-1½)	860-2 639 (700-2)	860-2¼ 639 (700-2¼)

SE-4, 26 DEC 2024 to 23 JAN 2025

SE-4, 26 DEC 2024 to 23 JAN 2025