

LOC I-MSL 109.7	APP CRS 297°	Rwy Idg TDZE Apt Elev	6694 551 551
---------------------------	------------------------	-----------------------------	---

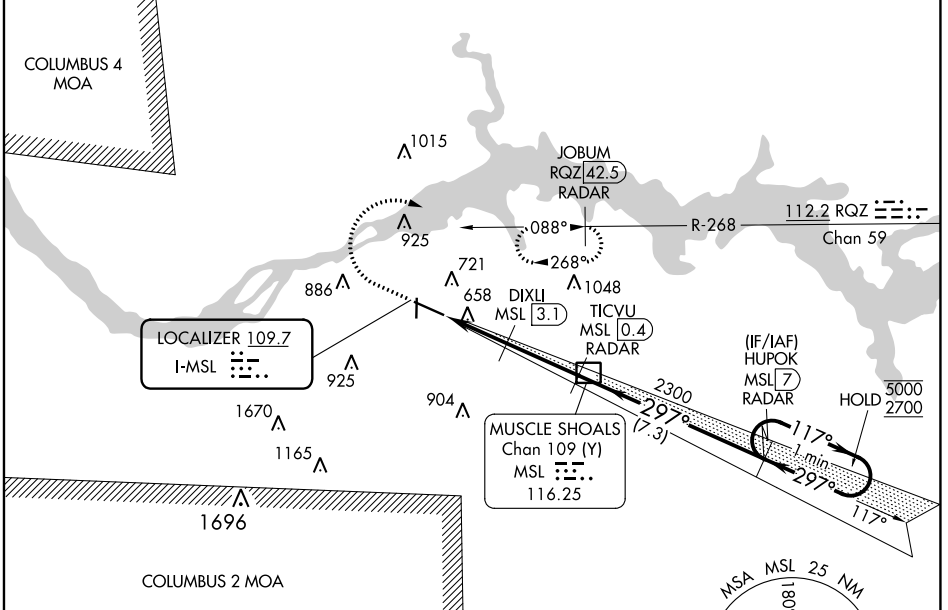
ILS Z or LOC Z RWY 30

NORTHWEST ALABAMA RGNL (MSL)

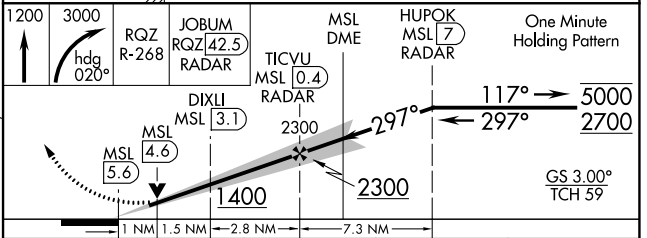
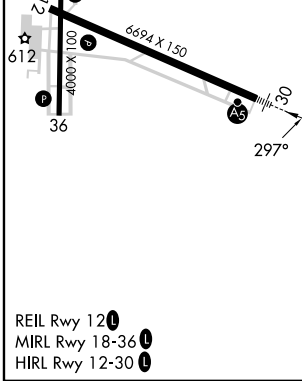
DME required. RADAR required.

MALS R MISSED APPROACH: Climb to 1200 then climbing right turn to 3000 on heading 020° to intercept RQZ VORTAC R-268 to JOBUM/RQZ VORTAC 42.5 DME/RADAR and hold, continue climb-in-hold to 3000.

ASOS 119.425	MEMPHIS CENTER 120.8 307.0	GCO 121.725	UNICOM 123.05 (CTAF)
------------------------	--------------------------------------	-----------------------	--------------------------------



ELEV 551	TDZE 551
----------	----------



CATEGORY	A	B	C	D
S-ILS 30	751-1/2		200 (200-1/2)	
S-LOC 30	920-1/2	369 (400-1/2)	920-5/8	369 (400-5/8)
C CIRCLING	1040-1	489 (500-1)	1280-2 729 (800-2)	1280-2 1/4 729 (800-2 1/4)

SE-4, 26 DEC 2024 to 23 JAN 2025

SE-4, 26 DEC 2024 to 23 JAN 2025