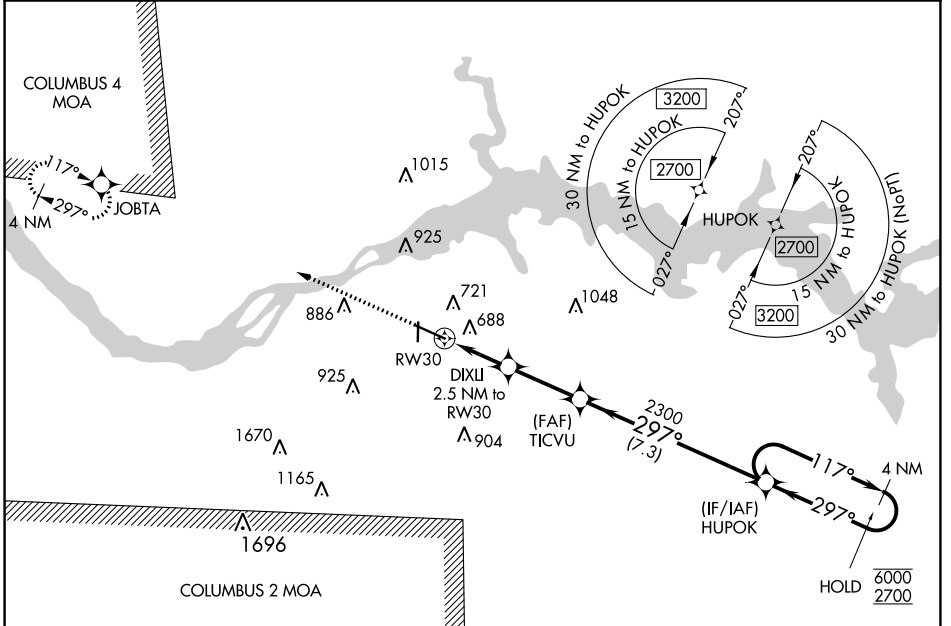


WAAS CH <b>40000</b> <b>W30A</b>	APP CRS <b>297°</b>	Rwy Idg TDZE Apt Elev	<b>6694</b> <b>551</b> <b>551</b>
--	------------------------	-----------------------------	---

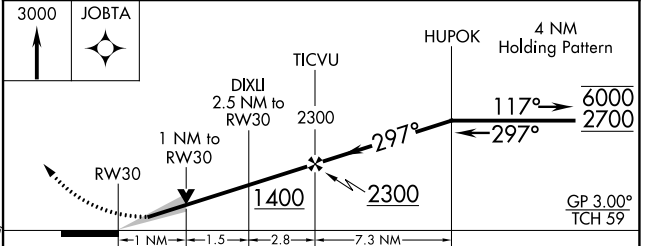
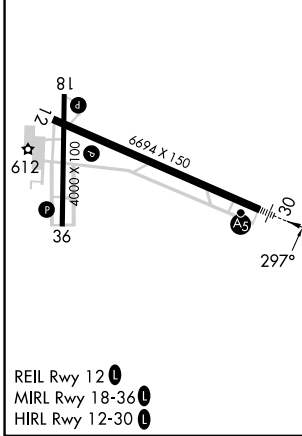
# RNAV (GPS) RWY 30

NORTHWEST ALABAMA RGNL (MISL)

RNP APCH - GPS.		MALSR	MISSED APPROACH: Climb to 3000 direct JOBTA and hold.
For uncompensated Baro-VNAV systems, LNAV/VNAV NA below -9°C or above 54°C.			
ASOS <b>119.425</b>	MEMPHIS CENTER <b>120.8 307.0</b>	GCO <b>121.725</b>	UNICOM <b>123.05 (CTAF)</b>



ELEV 551	TDZE 551
----------	----------



CATEGORY	A	B	C	D
LPV DA		751-1/2	200 (200-1/2)	
LNAV/VNAV DA		962-3/4	411 (500-3/4)	
LNAV MDA	940-1/2	389 (400-1/2)	940-5/8	389 (400-5/8)
CIRCLING	1040-1	489 (500-1)	1280-2	1280-2 1/4
			729 (800-2)	729 (800-2 1/4)

SE-4, 26 DEC 2024 to 23 JAN 2025

SE-4, 26 DEC 2024 to 23 JAN 2025