


WAAS CH <b>40313</b> RWY IDG <b>5930</b>	APP CRS <b>006°</b> TDZE <b>17</b>	Rwy Idg <b>5930</b> Apt Elev <b>36</b>
<b>W01B</b>		

# RNAV (GPS) Z RWY 1L

NAPA COUNTY (APC)

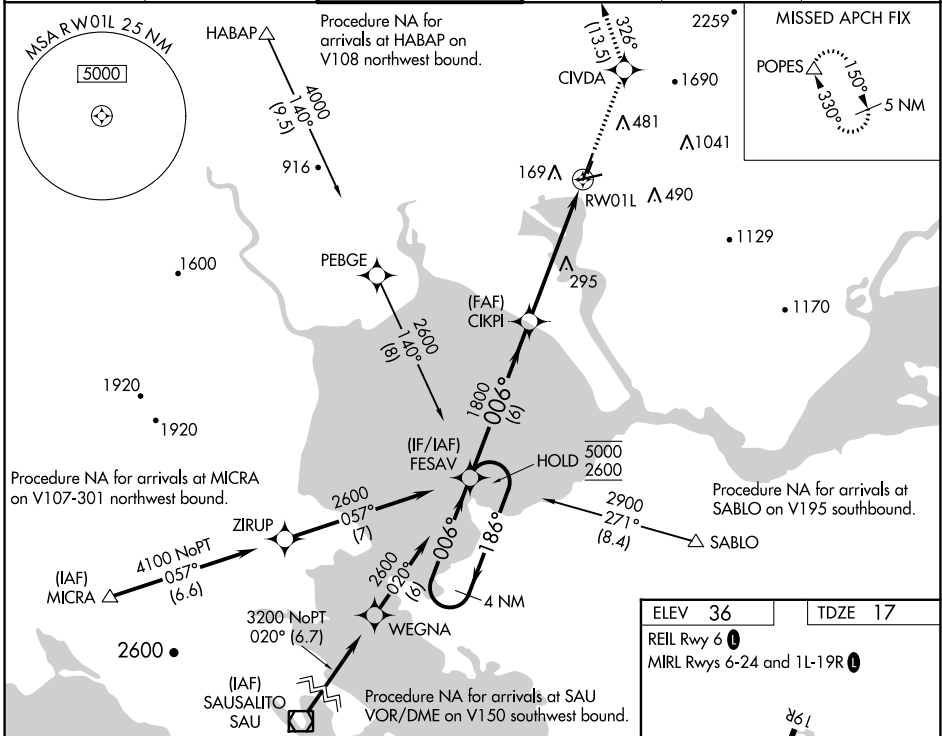
RNP APCH-GPS.

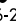

▼ For uncompensated Baro-VNAV systems, LNAV/VNAV NA below -4°C or above 54°C. Inop table does not apply to LPV minimums. For inop ALS, increase visibility LNAV/VNAV to 7/8 SM. Missed approach requires minimum climb of 420 feet per NM to 2200. If unable to meet climb gradient see RNAV (GPS) Y RWY 1L.

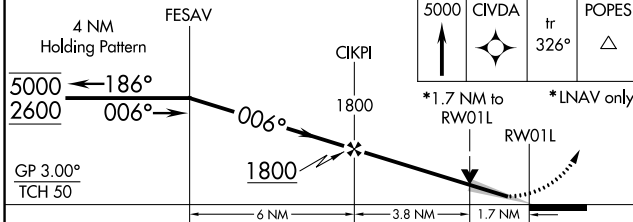
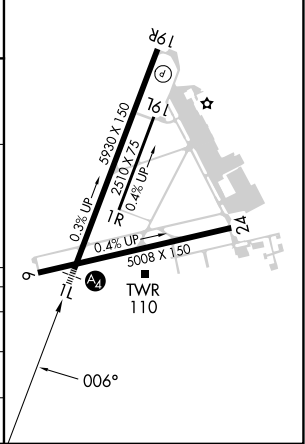
MALS 

MISSED APPROACH: Climb to 5000 direct CIVDA and on track 326° to POPES and hold, continue climb-in-hold to 5000.

ATIS <b>124.05</b>	OAKLAND CENTER <b>127.8 353.5</b>	NAPA TOWER ★ <b>118.7 (CTAF) 0 257.8</b>	GND CON <b>121.7</b>	CLNC DEL <b>127.85</b>	UNICOM <b>122.95</b>
-----------------------	--------------------------------------	---	-------------------------	---------------------------	-------------------------



ELEV <b>36</b>	TDZE <b>17</b>
REL Rwy 6 	
MIRL Rwy 6-24 and 1L-19R 	



CATEGORY	A	B	C	D
LPV DA		217-3/4	200 (200-3/4)	
LNAV/VNAV DA		330-3/4	313 (300-3/4)	
LNAV MDA	560-3/4	543 (600-3/4)	560-13/8	543 (600-13/8)

SW-2, 26 DEC 2024 to 23 JAN 2025

SW-2, 26 DEC 2024 to 23 JAN 2025