

RNAV (RNP) Z RWY 2C

NASHVILLE INTL (BNA)

APP CRS	Rwy Idg	7601
021°	TDZE	587
	Apt Elev	599

RNP AR APCH - GPS.

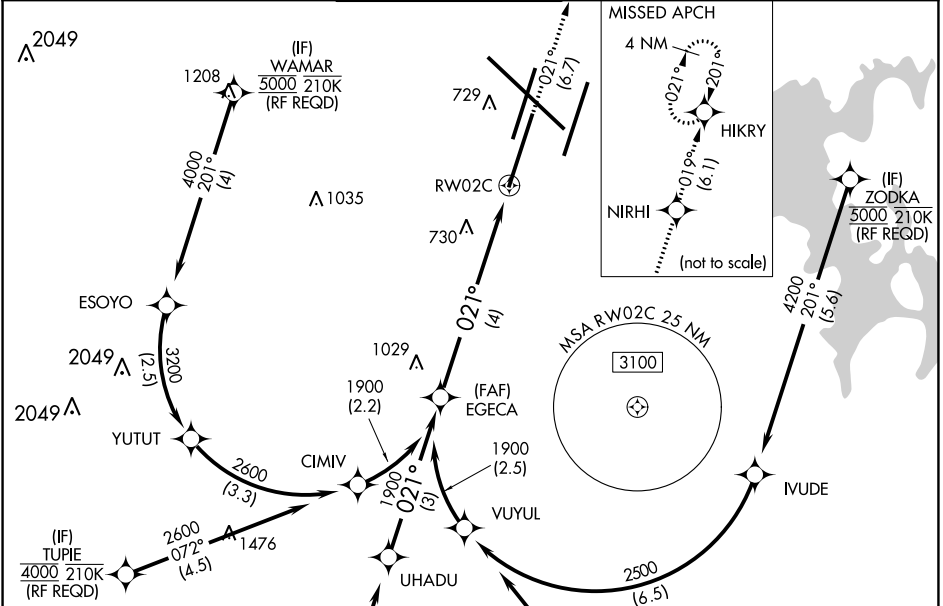
MALSR



MISSED APPROACH: Climb to 4000 on track 021° to NIRHI and on track 019° to HIKRY and hold, continue climb-in-hold to 4000.

▼ For uncompensated Baro-VNAV systems, procedure NA below -11°C or above 54°C. Simultaneous approach authorized with Rwy 2R. Use of FD or AP providing RNAV track guidance required during simultaneous operations. For inop MALSR, increase RNP 0.30 visibility to 1½ mile.

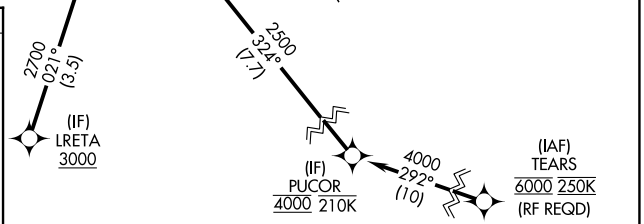
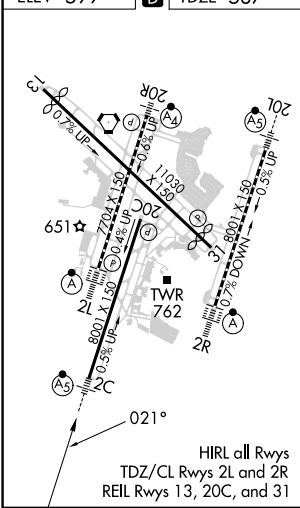
D-ATIS	NASHVILLE APP CON	NASHVILLE TOWER	GND CON	CLNC DEL	CPDLC
135.1	118.4 360.7	118.6 257.8	121.9 348.6	126.05	



SE-1, 26 DEC 2024 to 23 JAN 2025

SE-1, 26 DEC 2024 to 23 JAN 2025

ELEV 599	D	TDZE 587
----------	----------	----------



EGECA	See planview for multiple IF locations.	4000	NIRHI	HIKRY
1900		tr 021°	tr 019°	
4 NM				

CATEGORY	A	B	C	D
RNP 0.15 DA		882/24	295 (300-½)	
RNP 0.30 DA		1067/57	480 (500-1½)	

AUTHORIZATION REQUIRED