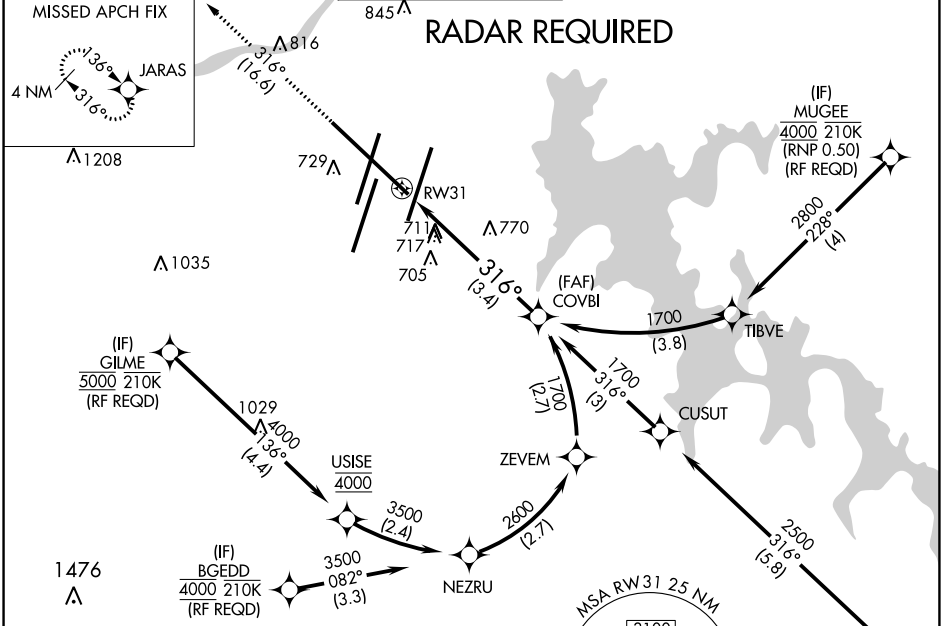


APP CRS	Rwy ldg	9487
316°	TDZE	578
	Apt Elev	599

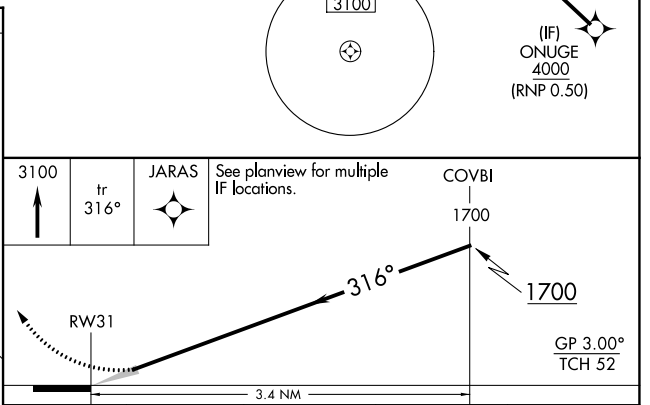
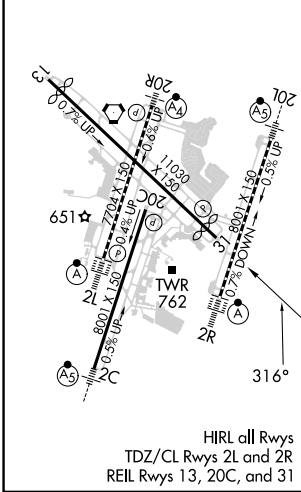
RNAV (RNP) Z RWY 31

NASHVILLE INTL (BNA)

<p>▼ For uncompensated Baro-VNAV systems, procedure NA below -16°C (4°F) or above 54°C (130°F). GPS required.</p>			<p>MISSED APPROACH: Climb to 3100 on track 316° to JARAS and hold.</p>		
D-ATIS	NASHVILLE APP CON	NASHVILLE TOWER	GND CON	CLNC DEL	CPDLC
135.1	118.4 360.7	118.6 257.8	121.9 348.6	126.05	



ELEV 599	D	TDZE 578
----------	----------	----------



CATEGORY	A	B	C	D
RNP 0.25 DA		1025-1½	447 (500-1½)	
RNP 0.30 DA		1099-1¾	521 (600-1¾)	

AUTHORIZATION REQUIRED

SE-1, 26 DEC 2024 to 23 JAN 2025

SE-1, 26 DEC 2024 to 23 JAN 2025