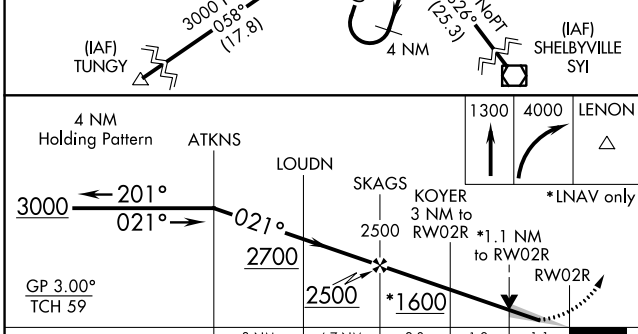
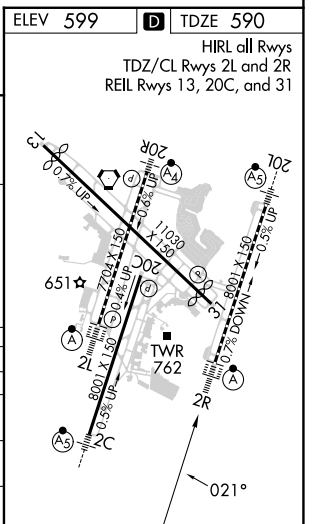
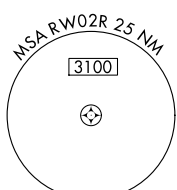
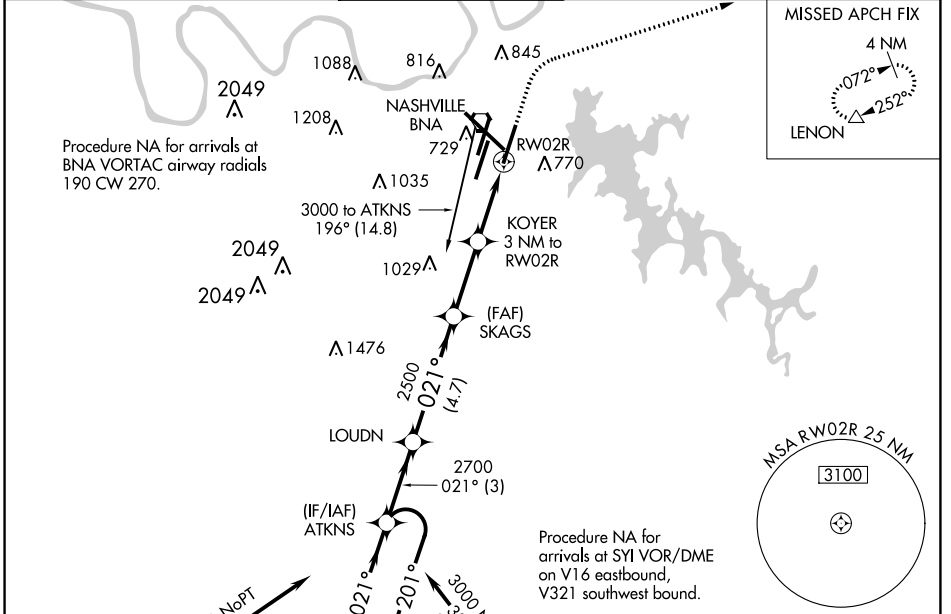


| | | | |
|--|------------------------|-----------------------------|---|
| WAAS CH 93713 W02D | APP CRS 021° | Rwy Idg TDZE Apt Elev | 8000 590 599 |
|--|------------------------|-----------------------------|---|

RNAV (GPS) Y RWY 2R

NASHVILLE INTL (BNA)

| | | | | | |
|---|---|---------------------------------------|-------------------------------|--|-------|
| RNP APCH | | ALSIF-2 | | MISSED APPROACH: Climb to 1300 then climbing right turn to 4000 direct LENON and hold. | |
| <p>For uncompensated Baro-VNAV systems, LNAV/VNAV NA below -11°C or above 54°C. Simultaneous approach authorized with Rwy 2L/C. LNAV procedure NA during simultaneous operations. Use of FD or AP providing RNAV track guidance required during simultaneous operations. For inop ALSIF-2 increase LNAV/VNAV visibility all Cats to RVR 5400.</p> | | | | | |
| D-ATIS 135.1 | NASHVILLE APP CON 118.4 360.7 | NASHVILLE TOWER 118.6 257.8 | GND CON 121.9 348.6 | CLNC DEL 126.05 | CPDLC |



| CATEGORY | A | B | C | D |
|--------------|-----------------------|-----------------------|-------------------------|-------------------------|
| LPV DA | | 790/18 | 200 (200-½) | |
| LNAV/VNAV DA | | 928/30 | 338 (400-¾) | |
| LNAV MDA | 1020/24 | 430 (500-½) | 1020/40 | 430 (500-¾) |
| CIRCLING | 1100-1 501 (600-1) | 1120-1 521 (600-1) | 1200-1¾ 601 (700-1¾) | 1380-2½ 781 (800-2½) |

SE-1, 26 DEC 2024 to 23 JAN 2025

SE-1, 26 DEC 2024 to 23 JAN 2025