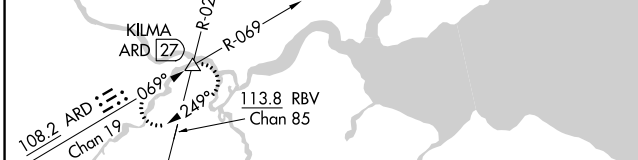
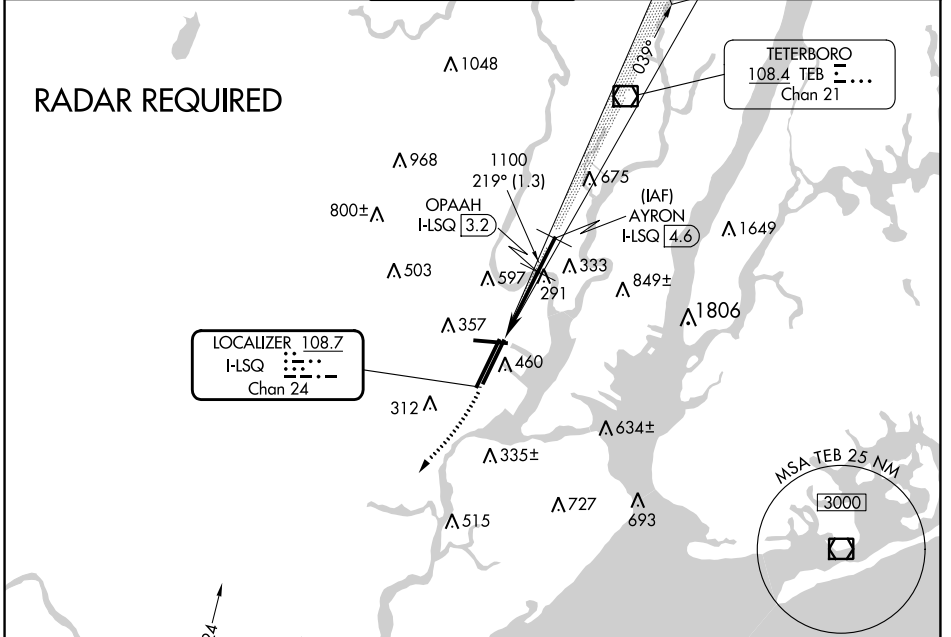


LOC/DME I-LSQ 108.7 Chan 24	APP CRS 219°	Rwy ldg 8207 TDZE 11 Apt Elev 18
---	------------------------	---

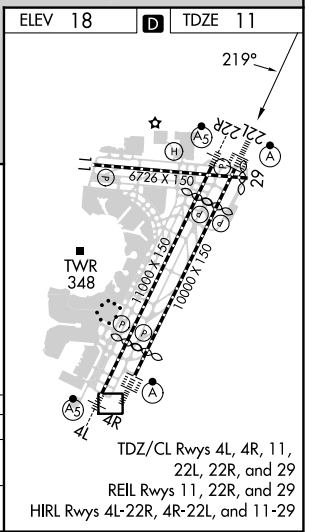
COPTER ILS/DME RWY 22L

NEWARK LIBERTY INTL (EWR)

D-ATIS 115.7 134.825		NEWARK APP CON 128.55 379.9	NEWARK TOWER 118.3 257.6	GND CON 121.8	CLNC DEL 118.85	CPDLC
--------------------------------	--	---------------------------------------	------------------------------------	-------------------------	---------------------------	-------



2000 hdg 225°	3000	ARD R-069	KILMA Δ	VGSI and ILS glidepath not coincident (VGSI Angle 3.00/TCH 60). OPAAH I-LSQ 3.2 AYRON I-LSQ 4.6
CATEGORY	COPTER			
H-ILS 22L	211/12 200 (200-¼)			
H-LOC 22L	560/12 549 (600-¼)			



COPTER ILS/DME RWY 22L

NE-2, 26 DEC 2024 to 23 JAN 2025

NE-2, 26 DEC 2024 to 23 JAN 2025

ALSf-2
MISSED APPROACH: Climbing right turn to 2000 heading 225° then climbing right turn to 3000 via ARD R-069 to KILMA INT and hold.

TETERBORO
108.4 TEB Chan 21

LOCALIZER 108.7
I-LSQ Chan 24

MSA TEB 25 NM
3000

ELEV 18 TDZE 11

TDZ/CL Rws 4L, 4R, 11, 22L, 22R, and 29
REIL Rws 11, 22R, and 29
HIRL Rws 4L-22R, 4R-22L, and 11-29