

LOC/DME I-GPR 109.15 Chan 28 (Y)	APP CRS 107°	Rwy ldg TDZE Apt Elev	6726 17 17
---	------------------------	-----------------------------	---------------------------------------

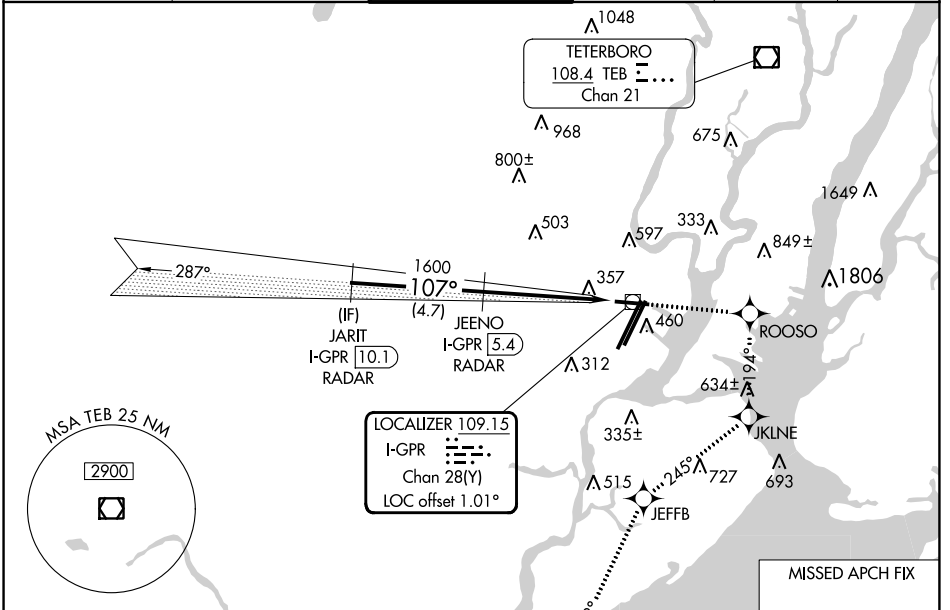
ILS or LOC RWY 11

NEWARK LIBERTY INTL (EWR)

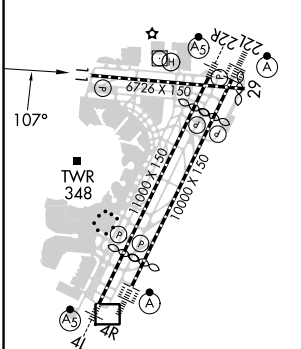
RNP APCH - GPS.
DME required. RADAR required.
 ⚠ Circling NA south of Rwy 11-29. When Circling to Rwy 29 at night, operational VGS1 required, remain on or above VGS1 glidepath until threshold. Rwy 11 helicopter visibility reduction below ¼ SM NA.

MISSED APPROACH: (Do not exceed 230K until JKLNE) Climb to 2000 direct ROOSO and right turn on track 194° to JKLNE and right turn on track 245° to JEFFB and left turn on track 218° to RAATO and hold.

D-ATIS 115.7 134.825	NEWARK APP CON 128.55 379.9	NEWARK TOWER 118.3 257.6	GND CON 121.8	CLNC DEL 118.85	CPDLC
--------------------------------	---------------------------------------	------------------------------------	-------------------------	---------------------------	-------

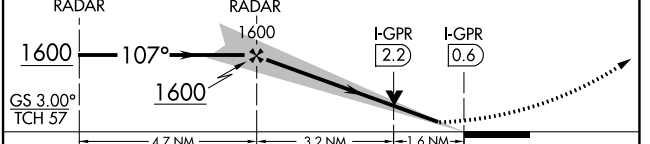


ELEV 17	D	TDZE 17
---------	----------	---------



2000 ROOSO	JKLNE	JEFFB	RAATO
↑	tr 194°	tr 245°	tr 218°

JARIT I-GPR [10.1] RADAR
 JEENO I-GPR [5.4] RADAR
 VGS1 and ILS glidepath not coincident (VGS1 Angle 3.00/TCH 60).



CATEGORY	A	B	C	D
S- ILS 11	618-1¾ 601 (700-1¾)			
S- LOC 11	660/55	643 (700-1)	660-1½	643 (700-1½)
C CIRCLING	660-1	643 (700-1)	900-2½ 883 (900-2½)	900-2¾ 883 (900-2¾)

NE-2, 26 DEC 2024 to 23 JAN 2025

NE-2, 26 DEC 2024 to 23 JAN 2025