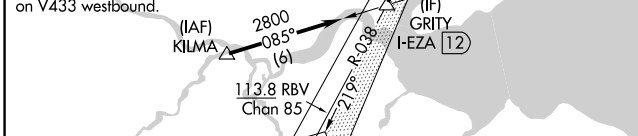
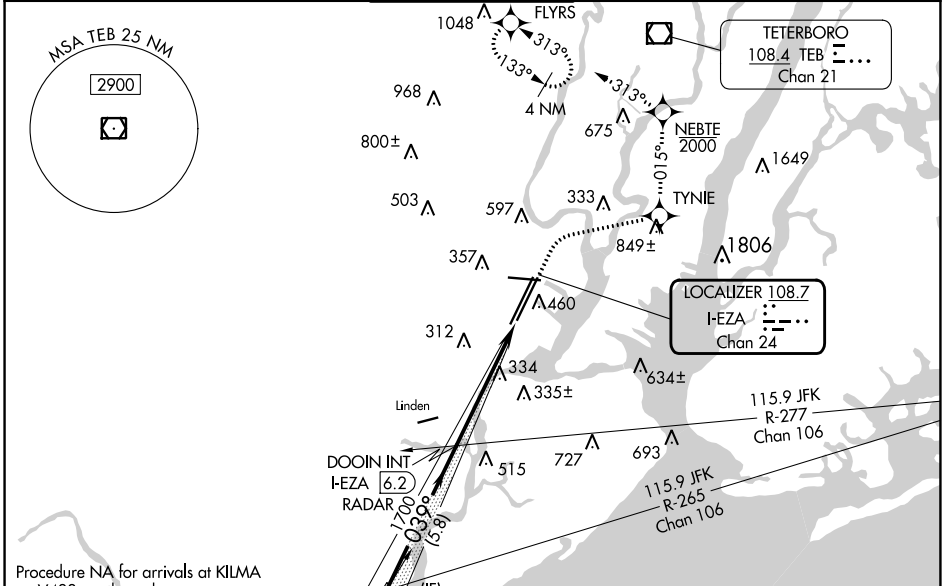


LOC/DME I-EZA	APP CRS	Rwy Idg	4R	4L
108.7	039°		8810	8460
Chan 24		TDZE	11	10
		Apt Elev	17	17

ILS or LOC RWY 4R

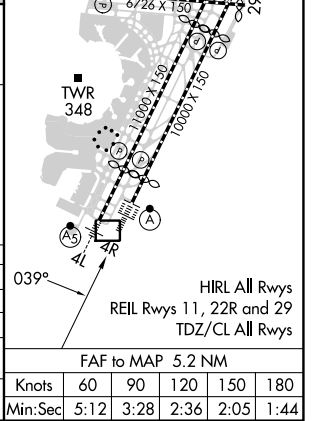
NEWARK LIBERTY INTL (EWR)

RNP APCH - GPS. RADAR required.		4R ALSF-2	4L MALSR	MISSED APPROACH: (Do not exceed 210K until NEBTE) Climb to 560 then climbing right turn to 2000 direct TYNIE and left turn on track 015° to NEBTE, cross NEBTE at or below 2000 then climbing left turn to 3000 on track 313° to FLYRS and hold, continue climb-in-hold to 3000.	
<p>When Circling to Rwy 29 at night, operational VGSI required, remain on or above VGSI glidepath until threshold. For inop ALS, increase Sidestep 4L Cat C visibility to 1½ SM.</p>		(A)	(AS)		
D-ATIS	NEWARK APP CON	NEWARK TOWER		GND CON	CLNIC DEL
115.7 134.825	128.55 379.9	118.3 257.6		121.8	118.85
CPDLC					



ELEV 17	TDZE 4R 11
	TDZE 4L 10

GRITY I-EZA 12	560	2000	TYNIE	NEBTE	3000	FLYRS
	↑	↻	tr 015°	2000	tr 313°	↻
DOOIN INT I-EZA 6.2						
VGSI and ILS glidepath not coincident (VGSI Angle 2.95/TCH 71).						
2800	039°		1700	I-EZA 2.7	I-EZA 1	
GS 2.95° TCH 55			5.8 NM	3.6 NM	1.7 NM	
CATEGORY	A	B	C	D		
S-ILS 4R	211/18 200 (200-½)					
S-LOC 4R	600/24	589 (600-½)	600-1¼	589 (600-1¼)		
SIDESTEP RWY 4L	600/55	590 (600-1)	600-1¼	590 (600-1½)		
			590 (600-1¼)			
CIRCLING	760-1	743 (800-1)	900-2¾	900-3		
			883 (900-2¾)	883 (900-3)		



NE-2, 26 DEC 2024 to 23 JAN 2025

NE-2, 26 DEC 2024 to 23 JAN 2025

FAF to MAP 5.2 NM					
Knots	60	90	120	150	180
Min:Sec	5:12	3:28	2:36	2:05	1:44