

LOC/DME I-EWR	APP CRS	Rwy Idg	4L	4R
<b>110.75</b>	<b>039°</b>		<b>8460</b>	<b>8810</b>
Chan 44 (Y)		TDZE	<b>10</b>	<b>11</b>
		Apt Elev	<b>17</b>	<b>17</b>

# I LS Z or LOC Z RWY 4L

NEWARK LIBERTY INTL (EWR)

RNP APCH - GPS.

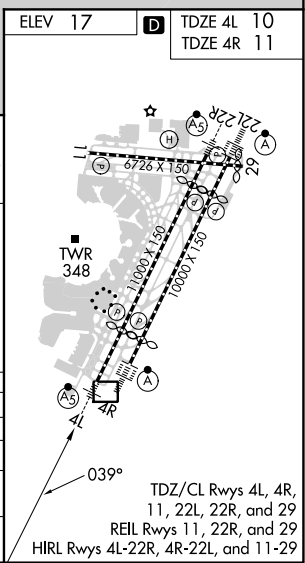
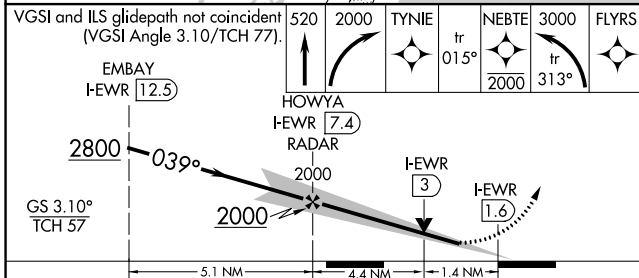
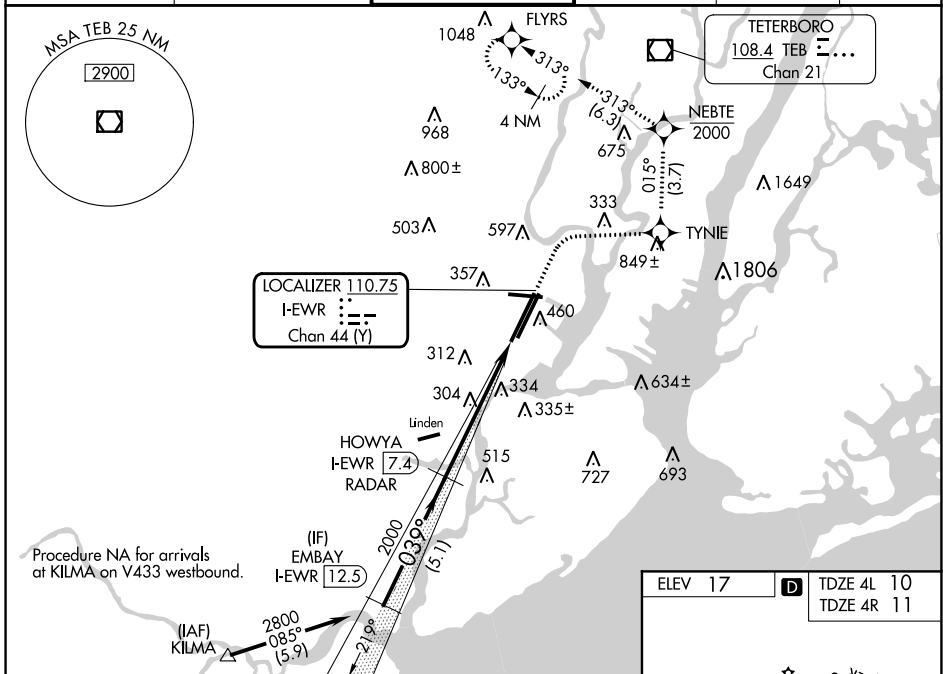
DME and RADAR required.

⚠ When Circling to Rwy 29 at night, operational VGSI required, remain on or above VGSI glidepath until threshold. For inop ALS, increase sidestep 4R Cat C visibility to 1½ SM.

4L MALSR 4R ALSF-2

MISSED APPROACH: (Do not exceed 210K until NEBTE) Climb to 520, then climbing right turn to 2000 direct TYNIE and on track 015° to NEBTE, cross NEBTE at or below 2000, then climbing left turn to 3000 on track 313° to FLYRS and hold, continue climb-in-hold to 3000.

D-ATIS	NEWARK APP CON	NEWARK TOWER	GND CON	CLNC DEL	CPDLC
<b>115.7 134.825</b>	<b>128.55 379.9</b>	<b>118.3 257.6</b>	<b>121.8</b>	<b>118.85</b>	



CATEGORY	A	B	C	D
S-ILS 4L	210/18 200 (200-½)			
S-LOC 4L	560/24	550 (600-½)	560/60	550 (600-1¼)
SIDESTEP 4R	600/55	589 (600-1)	600/60 589 (600-1¼)	600-1½ 589 (600-1½)
CIRCLING	760-1	743 (800-1)	900-2¾ 883 (900-2¾)	900-3 883 (900-3)

# I LS Z or LOC Z RWY 4L

NE-2, 26 DEC 2024 to 23 JAN 2025

NE-2, 26 DEC 2024 to 23 JAN 2025