

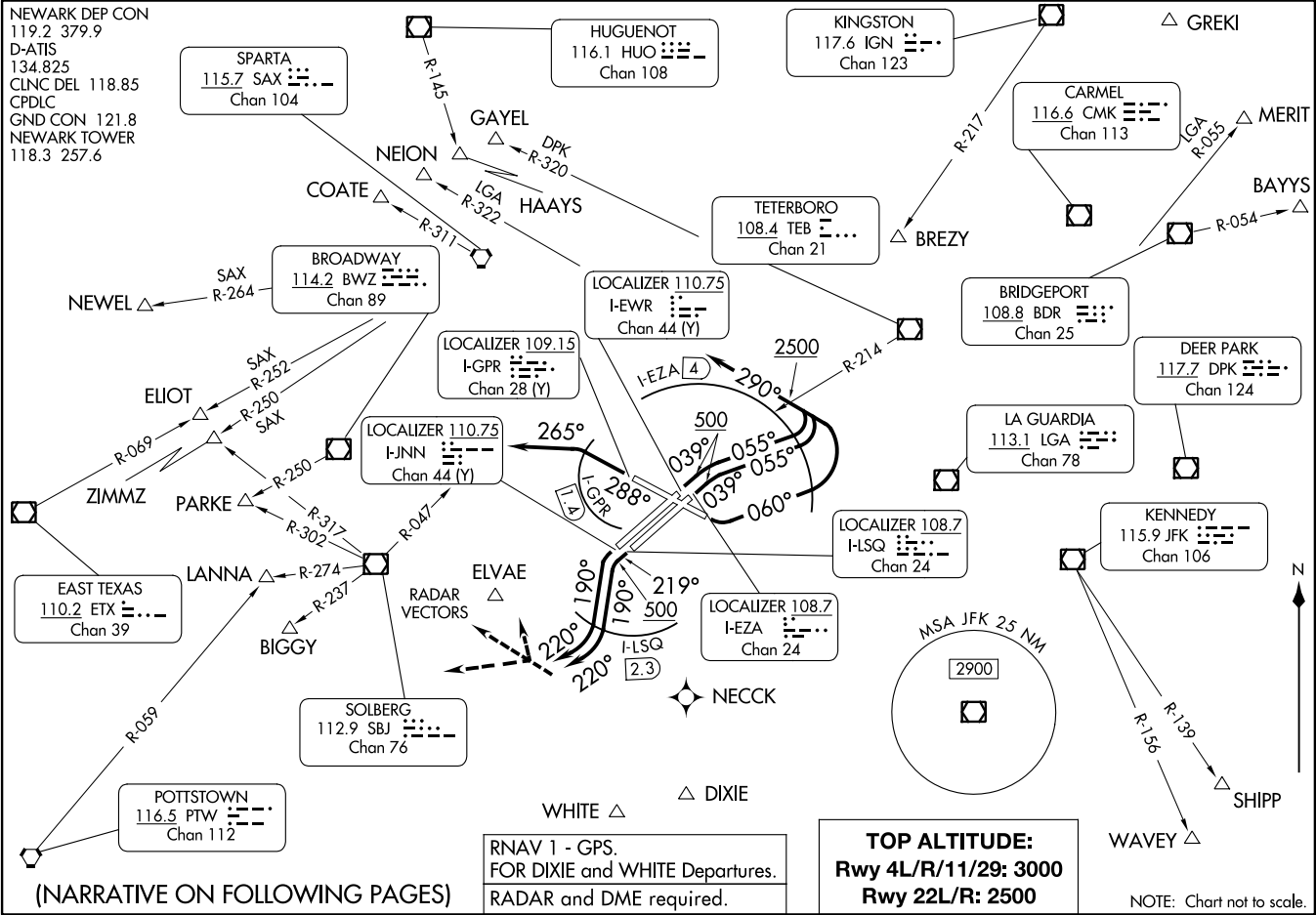
NEWARK FIVE DEPARTURE  
(EWRS, EWR) 30NOV23

NEWARK FIVE DEPARTURE  
24Z277

A1-285 (FAA)

NEWARK LIBERTY INTL (EWR)  
NEWARK, NEW JERSEY

NEWARK DEP CON  
119.2 379.9  
D-ATIS  
134.825  
CLNC DEL 118.85  
CPDLC  
GND CON 121.8  
NEWARK TOWER  
118.3 257.6



(NARRATIVE ON FOLLOWING PAGES)

RNAV 1 - GPS. FOR DIXIE and WHITE Departures. RADAR and DME required.
---

<b>TOP ALTITUDE:</b> Rwy 4L/R/11/29: 3000 Rwy 22L/R: 2500
---

NOTE: Chart not to scale.

NEWARK, NEW JERSEY  
NEWARK LIBERTY INTL (EWR)



DEPARTURE ROUTE DESCRIPTION

TAKEOFF RUNWAY 4L/R: Climb on heading 039° to 500, then climbing right turn to heading 055° to I-EZA 4 DME (use I-EWR 3.6 DME when I-EZA is NA), then climbing left turn to heading 290°, cross TEB R-214 westbound at or above 2500, climb and maintain 3000, thence....

TAKEOFF RUNWAY 11: Climbing left turn on heading 060° to I-EZA 4 DME (use I-EWR 3.6 DME when I-EZA is NA), then climbing left turn to heading 290°, cross TEB R-214 westbound at or above 2500, climb and maintain 3000, thence....

TAKEOFF RUNWAY 22L: Climb on heading 219° to 500, then climbing left turn to heading 190° to I-LSQ 2.3 DME (use I-JNN 2.8 DME when I-LSQ is NA), then climbing right turn to heading 220°, maintain 2500, thence....

TAKEOFF RUNWAY 22R: Climbing left turn on heading 190° to I-LSQ 2.3 DME (use I-JNN 2.8 DME when I-LSQ is NA), then climbing right turn to heading 220°, maintain 2500, thence....

TAKEOFF RUNWAY 29: Climb on heading 288° to I-GPR 1.4 DME, then climbing left turn to heading 265°, maintain 3000, thence....

....as per notes or for RADAR vectors to assigned route/fix. Expect clearance to filed altitude/flight level ten (10) minutes after departure.

All Aircraft: ATC climb gradients: If unable to accept climb rates advise ATC prior to taxi.  
Rwy 4L/R/11: ATC climb of 500' /NM to 2500.  
Rwy 22L: ATC climb of 500' /NM to 600.  
Rwy 22R/29: ATC climb of 500' /NM to 500.

LOST COMMUNICATIONS: For aircraft proceeding to COATE, NEION, HAAYS, GAYEL, or BREZY, if radio contact lost/not established with ATC, climb to 3000 after SBJ R-047.

(NOTES CONTINUED ON FOLLOWING PAGE)

(NOTES CONTINUED)

NOTE: Rwy 4L/R, 11 simultaneous reception of EWR ILS/DME required.

NOTE: Rwy 22L/R westbound departures expect RADAR vectors between 5 and 8 NM.

	Depart Rwy 4L/R	Depart Rwy 22L/R
	<u>Expect RADAR VECTORS to:</u>	<u>Expect RADAR VECTORS to:</u>
<u>DP FIX</u>		
BAYYS	BDR/BDR R-054	BDR/BDR R-054
BIGGY	<b>SBJ</b> /SBJ R-237	<b>SBJ</b> /SBJ R-237
BREZY	IGN R-217 to BREZY	IGN R-217 to BREZY
COATE	SAX/SAX R-311	SAX/SAX R-311
DIXIE	ELVAE/NECCK	ELVAE/NECCK
ELIOT	SAX R-252	ETX (2300L-0700L SBJ/ETX)
GAYEL	DPK R-320	DPK R-320
HAAYS	HUO	HUO
LANNA	PTW R-059	<b>SBJ</b> /SBJ R-274
MERIT	LGA R-055	LGA R-055
NEION	LGA R-322	LGA R-322
NEWEL	SAX/SAX R-264	SAX/SAX R-264
PARKE	BWZ R-250	<b>SBJ</b> /SBJ R-302
SHIPP	JFK/JFK R-139	JFK/JFK R-139
WAVEY	JFK/JFK R-156	JFK/JFK R-156
WHITE	ELVAE/NECCK	ELVAE/NECCK
ZIMMZ	SAX R-250	<b>SBJ</b> /SBJ R-317

NOTE: ELIOT may be accessed by all types of aircraft requesting a final altitude of 14000 or 16000.

NOTE: NEWEL may be accessed by turbo jet aircraft only requesting a final altitude at or above FL180.

NOTE: ZIMMZ may be accessed by all types of aircraft requesting a final altitude at or above FL180.

TAKEOFF MINIMUMS:

- Rwy 4L: Standard with minimum climb of 365'/NM to 800.
- Rwy 4R: Standard with minimum climb of 345'/NM to 900.
- Rwy 11: Standard with minimum climb of 250'/NM to 2000.
- Rwy 22L: Standard with minimum climb of 450'/NM to 700.
- Rwy 22R: Standard with minimum climb of 225'/NM to 500.
- Rwy 29: Standard with minimum climb of 455'/NM to 500.

NE-2, 26 DEC 2024 to 23 JAN 2025

NE-2, 26 DEC 2024 to 23 JAN 2025