

PHLBO FOUR ARRIVAL (RNAV) Transition Routes

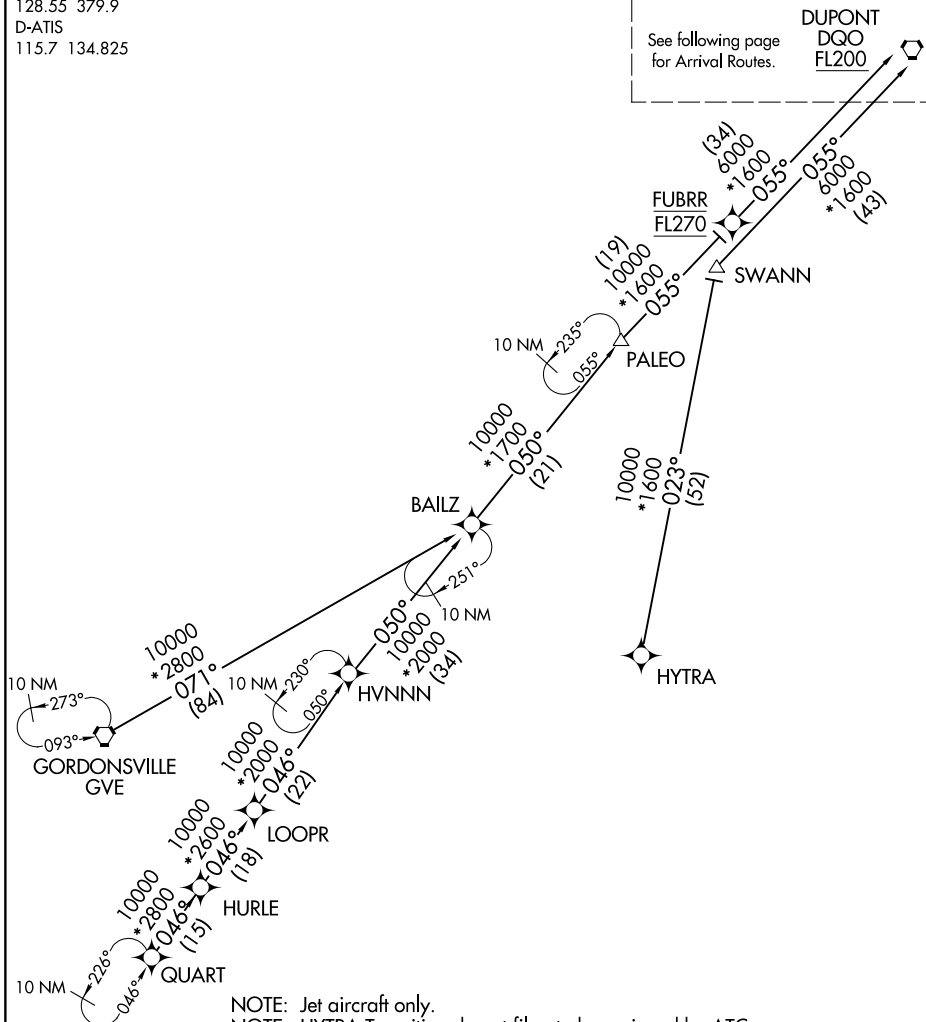
NEWARK LIBERTY INTL (EWR)
NEWARK, NEW JERSEY

WASHINGTON CENTER
132.52 307.25
NEWARK APP CON
128.55 379.9
D-ATIS
115.7 134.825

RNAV 1 - DME/DME/IRU or GPS.

RADAR required.

See following page for Arrival Routes.
DUPONT
DQO
FL200



NOTE: Jet aircraft only.
NOTE: HYTRA Transition do not file - to be assigned by ATC.
NOTE: Landing Rwy 4L/R & 29, approaching METRO expect RADAR vectors.
NOTE: Landing Rwy 11 & 22L/R, approaching PHLBO expect RADAR vectors.

NOTE: Chart not to scale.

GORDONSVILLE TRANSITION (GVE.PHLBO4)
HYTRA TRANSITION (HYTRA.PHLBO4)
QUART TRANSITION (QUART.PHLBO4)
SWANN TRANSITION (SWANN.PHLBO4)

(CONTINUED ON FOLLOWING PAGE)

NE-2, 26 DEC 2024 to 23 JAN 2025

NE-2, 26 DEC 2024 to 23 JAN 2025

PHLBO FOUR ARRIVAL (RNAV) Transition Routes

NEWARK, NEW JERSEY
NEWARK LIBERTY INTL (EWR)

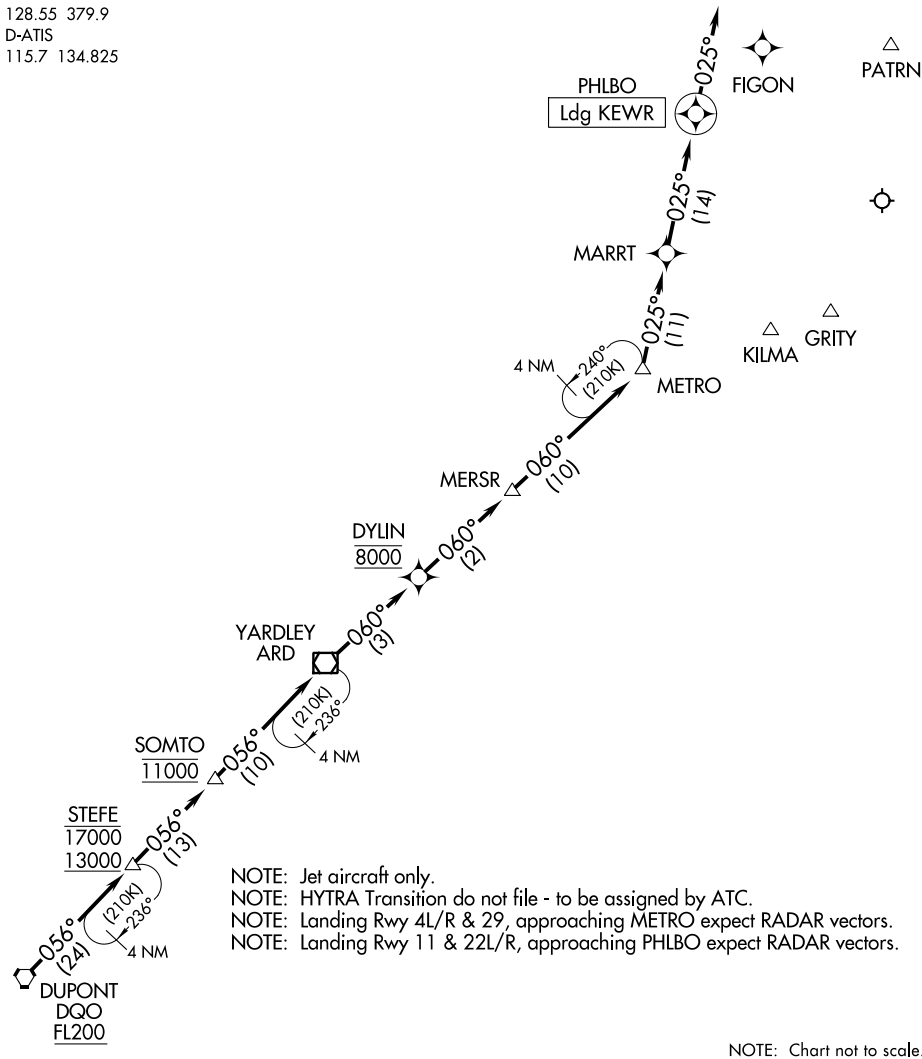
PHLBO FOUR ARRIVAL (RNAV) Arrival Routes

NEWARK LIBERTY INTL (EWR)
NEWARK, NEW JERSEY

WASHINGTON CENTER
132.52 307.25
NEWARK APP CON
128.55 379.9
D-ATIS
115.7 134.825

RNAV 1 - DME/DME/IRU or GPS.

RADAR required.



ARRIVAL ROUTE DESCRIPTION

From DQO VORTAC on track 056° to cross STEFE between 13000 and 17000, then on track 056° to cross SOMTO at 11000, then on track 056° to ARD VOR/DME, then on track 060° to cross DYLIN at 8000, then on track 060° to MERSR, then on track 060° to METRO, then on track 025° to MARRT, then on track 025° to PHLBO, then on track 025°. Expect RADAR vectors to final approach course.

PHLBO FOUR ARRIVAL (RNAV) Arrival Routes