

APP CRS	Rwy Idg	<b>6726</b>
<b>108°</b>	TDZE	<b>17</b>
	Apt Elev	<b>17</b>

# RNAV (GPS) RWY 11

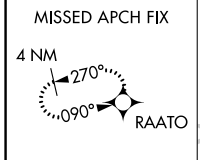
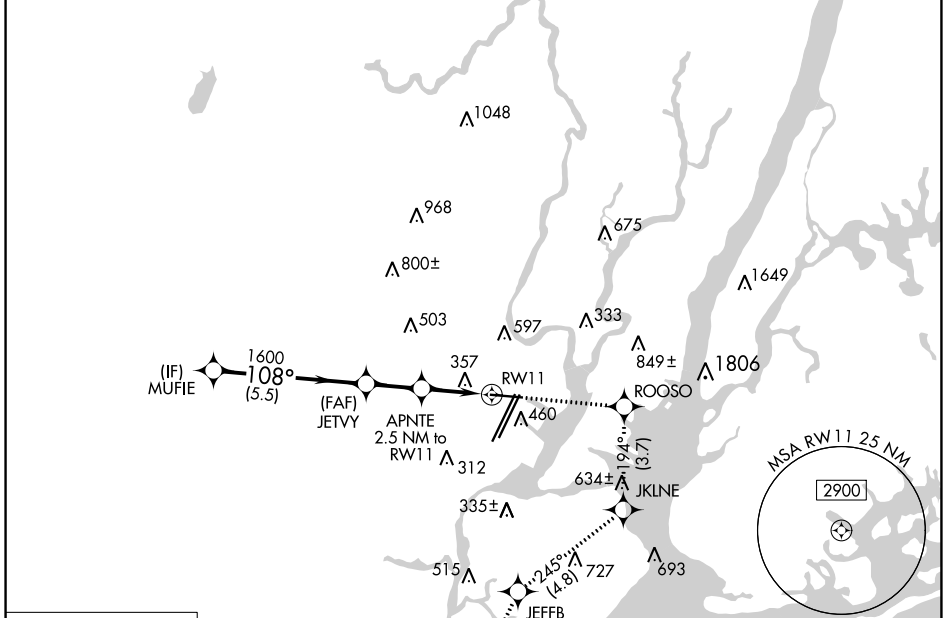
NEWARK LIBERTY INTL (EWR)

RNP APCH - GPS.

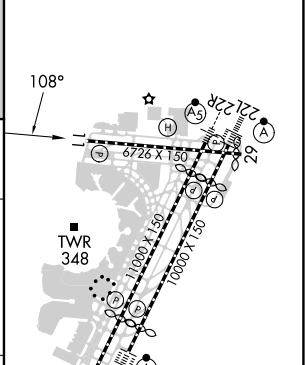
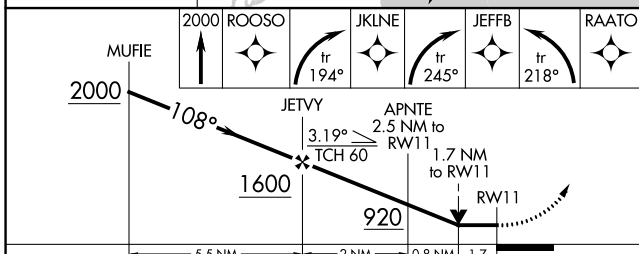
**▼** Circling NA south of Rwy 11-29. When Circling to Rwy 29 at night, operational VGSJ required, remain on or above VGSJ glidepath until threshold. Rwy 11 helicopter visibility reduction below RVR 4000 NA.

**MISSED APPROACH:** (Do not exceed 230K until JKLNE) Climb to 2000 direct ROOSO and right turn on track 194° to JKLNE and right turn on track 245° to JEFFB and left turn on track 218° to RAATO and hold.

D-ATIS	NEWARK APP CON	NEWARK TOWER	GND CON	CLNC DEL	CPDLC
<b>115.7 134.825</b>	<b>128.55 379.9</b>	<b>118.3 257.6</b>	<b>121.8</b>	<b>118.85</b>	



ELEV 17	<b>D</b> TDZE 17
---------	------------------



CATEGORY	A	B	C	D
LNVA MDA	620/55	603 (700-1)	620-1¾	603 (700-1¾)
<b>C</b> CIRCLING	660-1	643 (700-1)	900-2¾ 883 (900-2¾)	900-3 883 (900-3)

HIRL All Rwy's  
REIL Rwy's 11, 22R, and 29  
TDZ/CL All Rwy's

NE-2, 26 DEC 2024 to 23 JAN 2025

NE-2, 26 DEC 2024 to 23 JAN 2025