

RNAV (GPS) RWY 4L

NEWARK LIBERTY INTL (EWR)

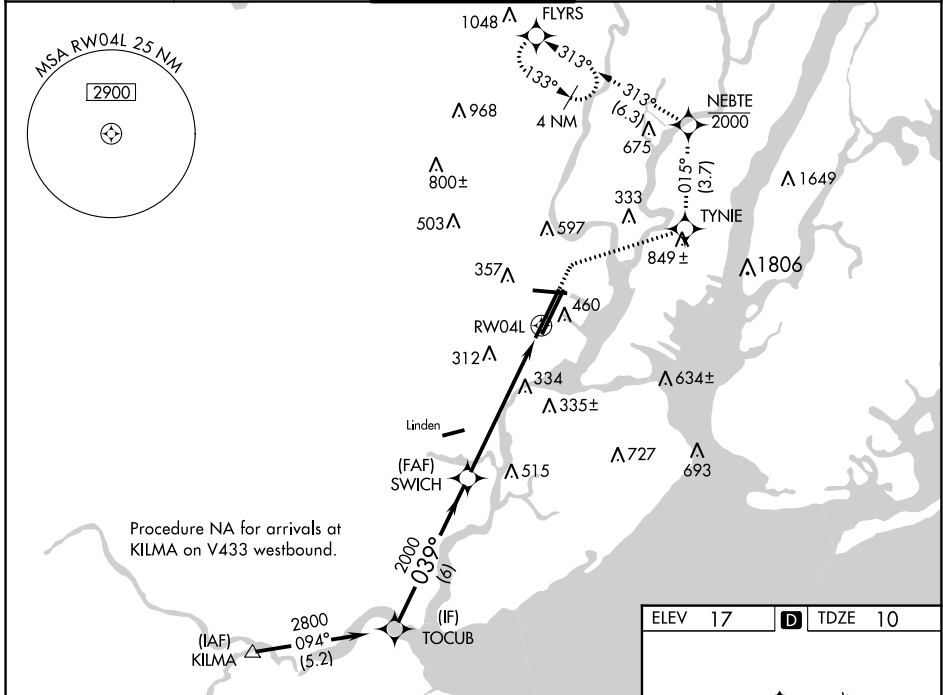
WAAS CH 56224 W04A	APP CRS 039°	Rwy Idg 8460 TDZE 10 Apt Elev 17
--	------------------------	---

RNP APCH - GPS.

⚠ When Circling for Rwy 29 at night, operational VGSI required, remain on or above VGSI glidepath until threshold. For uncompensated Baro-VNAV systems, LNAV/VNAV NA below -12°C or above 54°C.

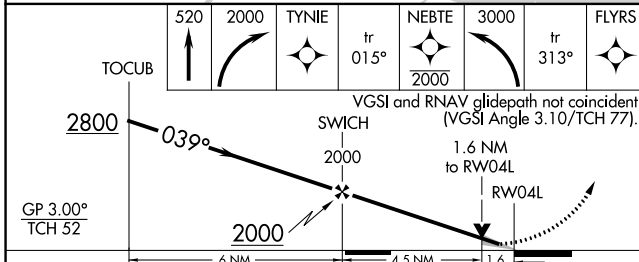
MALSR
⚠ MISSED APPROACH: (Do not exceed 210K until NEBTE) Climb to 520, then climbing right turn to 2000 direct TYNIE, and on track 015° to NEBTE, cross NEBTE at or below 2000, then climbing left turn to 3000 on track 313° to FLYRS and hold, continue climb-in-hold to 3000.

D-ATIS 115.7 134.825	NEWARK APP CON 128.55 379.9	NEWARK TOWER 118.3 257.6	GND CON 121.8	CLNC DEL 118.85	CPDLC
--------------------------------	---------------------------------------	------------------------------------	-------------------------	---------------------------	-------

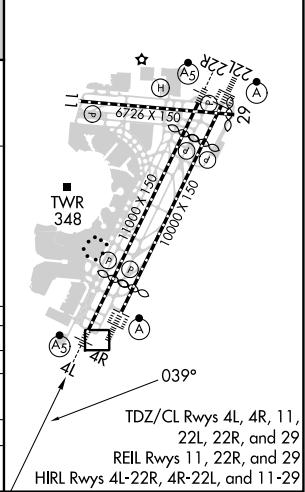


NE-2, 26 DEC 2024 to 23 JAN 2025

NE-2, 26 DEC 2024 to 23 JAN 2025



ELEV 17	D TDZE 10
---------	------------------



CATEGORY	A	B	C	D
LPV DA		210/18	200 (200-½)	
LNAV/VNAV DA		550/55	540 (600-1)	
LNAV MDA	600/24	590 (600-½)	600-1¼	590 (600-1¼)
C CIRCLING	760-1	743 (800-1)	900-2¾ 883 (900-2¾)	900-3 883 (900-3)

TDZ/CL Rwy 4L, 4R, 11, 22L, 22R, and 29
REIL Rwy 11, 22R, and 29
HIRL Rwy 4L-22R, 4R-22L, and 11-29