

| | | |
|--|------------------------|---|
| LOC/DME I-NEW 111.3 Chan 50 | APP CRS 177° | Rwy Idg 5510 TDZE 8 Apt Elev 8 |
|--|------------------------|---|

ILS or LOC RWY 18R

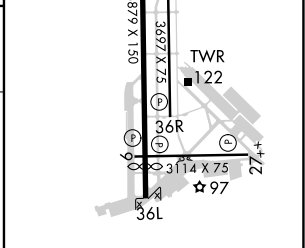
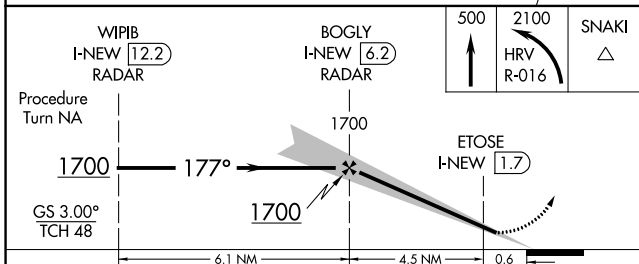
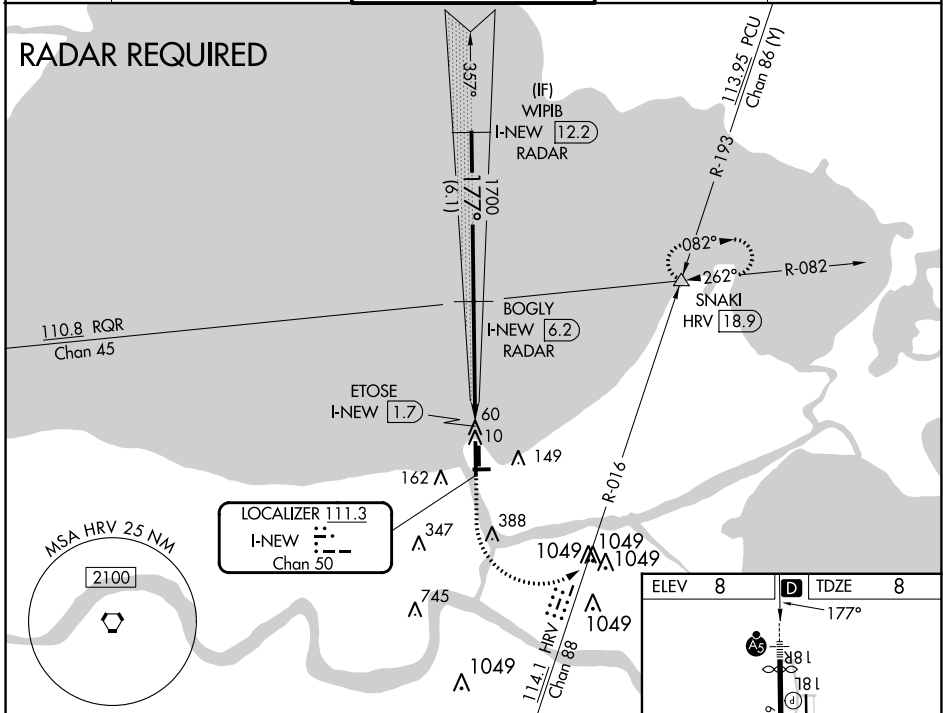
LAKEFRONT (NEW)

⚠ Inop table does not apply to S-ILS 18R. For inop MALSR when using Louis Armstrong New Orleans Intl altimeter setting, increase S-LOC 18R Cats A-C visibility to 1 mile. For inop MALSR, increase S-LOC 18R all Cats visibility to 1 mile. DME or RADAR required. Visibility reduction by helicopters NA. When local altimeter setting not received, use Louis Armstrong New Orleans Intl altimeter setting and increase all DA 29 feet and all MDA 40 feet; increase Circling Cat D visibility ¼ mile.



MISSED APPROACH: Climb to 500 then climbing left turn to 2100 on HRV VORTAC R-016 to SNAKI INT and hold.

| | | | | |
|----------------------|---|---|---------------------------------|--------------------------|
| ATIS 124.9 | NEW ORLEANS APP CON NORTH 133.15 290.3 SOUTH 123.85 256.9 | LAKEFRONT TOWER * 118.95 (CTAF) 0 | GND CON 121.7 335.575 | CLNC DEL 127.4 |
|----------------------|---|---|---------------------------------|--------------------------|



| | | | | | |
|-----------|----------------------------------|----------------------|----------------------|------------------------------|-------------------------------|
| CATEGORY | A | B | C | D | MRL Rwy 18R-36L |
| S-ILS 18R | | 258-3/4 | 250 (300-3/4) | | MRL Rwys 9-27 and 18L-36R |
| S-LOC 18R | | 320-3/4 | 312 (400-3/4) | | REIL Rwys 9, 18L, 36L and 36R |
| | | | | | FAF to MAP 4.5 NM |
| CIRCLING | 480-1 472 (500-1) | 520-1 512 (600-1) | 700-2 692 (700-2) | 820-2 3/4 812 (900-2 3/4) | |
| | Knots 60 90 120 150 180 | | | | |
| | Min:Sec 4:30 3:00 2:15 1:48 1:30 | | | | |

SC-4, 26 DEC 2024 to 23 JAN 2025

SC-4, 26 DEC 2024 to 23 JAN 2025