

LOC/DME I-URD 110.5 Chan 42	APP CRS 224°	Rwy Idg TDZE 12 Apt Elev 21	7002
---	------------------------	---	-------------

ILS RWY 22 (SA CAT I & II) LAGUARDIA (LGA)

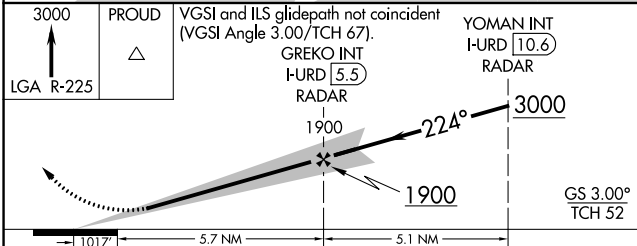
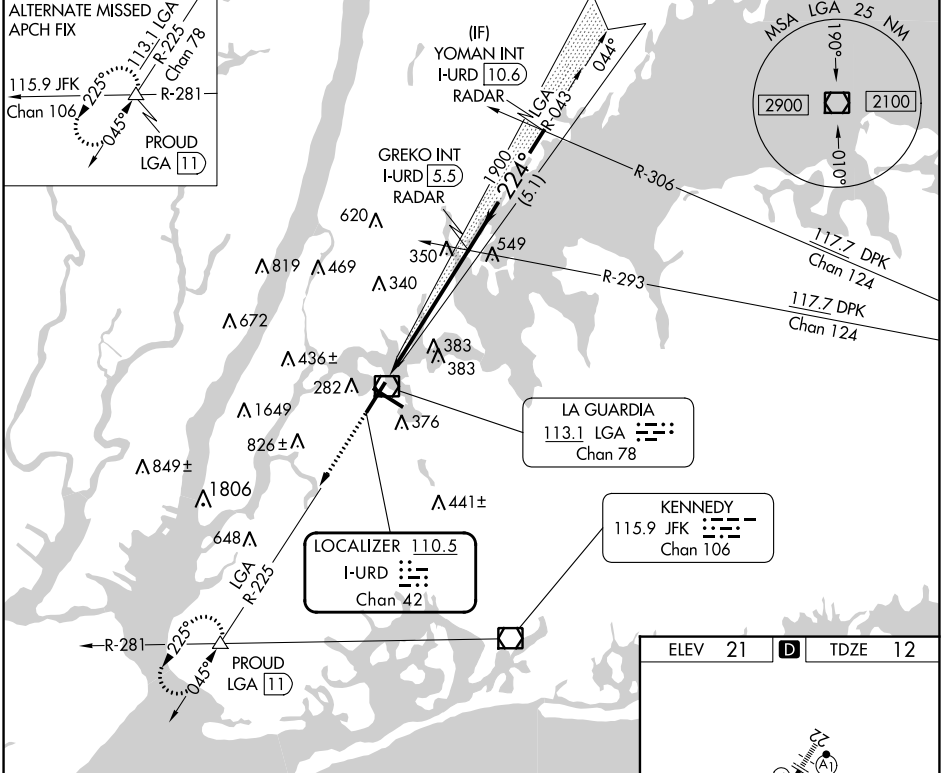
RADAR required for procedure entry.

ALSF-1

MISSED APPROACH: Climb to 3000 on LGA VOR/DME R-225 to PROUD INT/LGA11 DME and hold, continue climb-in-hold to 3000.

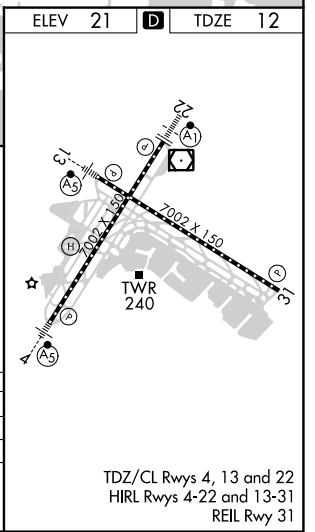
SA CAT I: Requires specific OPSPEC, MSPEC or LOA approval and use of HUD to DH. SA CAT II: Reduced lighting: Requires specific OPSPEC, MSPEC, or LOA approval and use of autoland or HUD to touchdown.

D-ATIS ARR 125.95	NEW YORK APP CON 120.8 263.0	LAGUARDIA TOWER 118.7 263.0	GND CON 121.7 263.0	CLNC DEL 135.2	CPDLC
--------------------------	--	---------------------------------------	-------------------------------	--------------------------	-------



3000	PROUD	VGS1 and ILS glidepath not coincident (VGS1 Angle 3.00/TCH 67).		YOMAN INT I-URD 10.6
LGA R-225				RADAR
				GREKO INT I-URD 5.5
				RADAR

CATEGORY	A	B	C	D
S-ILS 22	SA CAT I	RA 162/14	150	DA 162
S-ILS 22	SA CAT II	RA 112/12	100	DA 112



SA CATEGORY I & II ILS - SPECIAL AIRCREW & AIRCRAFT CERTIFICATION REQUIRED

TDZ/CL Rws 4, 13 and 22
 HIRL Rws 4-22 and 13-31
 REIL Rwy 31

NE-2, 26 DEC 2024 to 23 JAN 2025

NE-2, 26 DEC 2024 to 23 JAN 2025