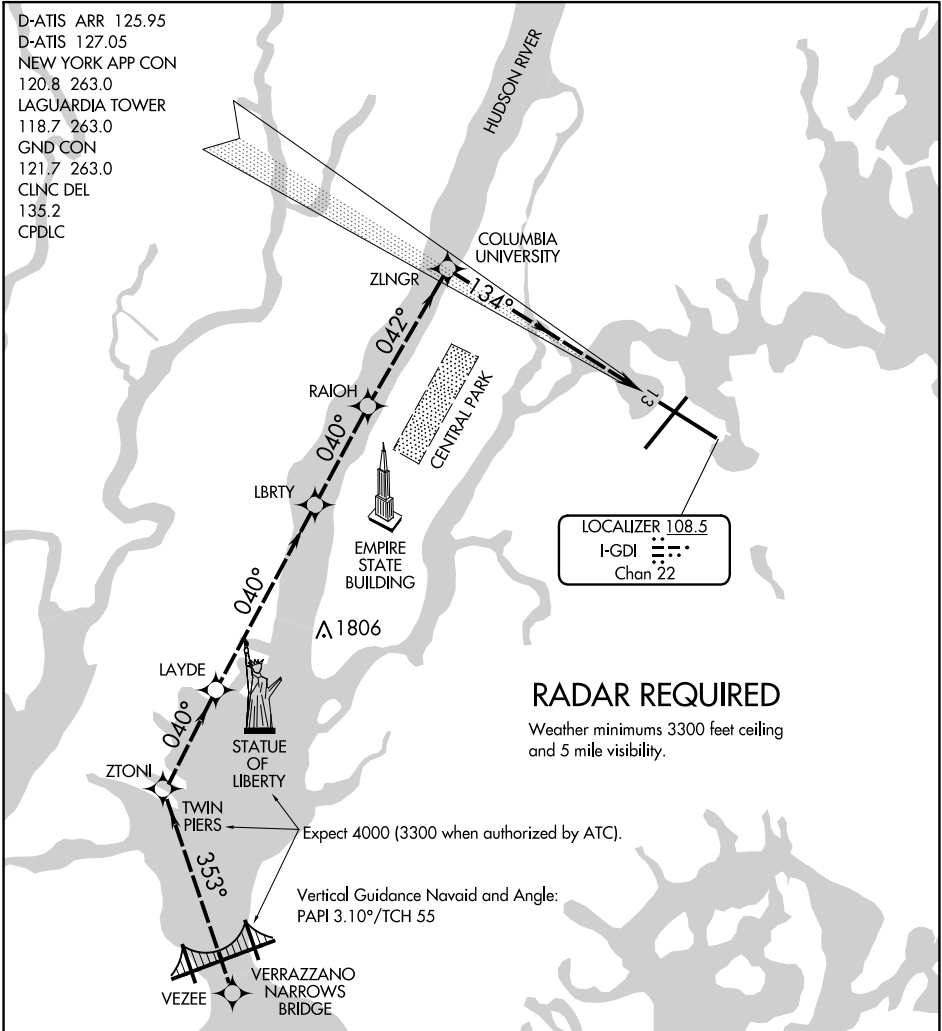


RIVER VISUAL RWY 13

AL-289 (FAA)

LAGUARDIA (LGA)
NEW YORK, NEW YORK

D-ATIS ARR 125.95
 D-ATIS 127.05
 NEW YORK APP CON
 120.8 263.0
 LAGUARDIA TOWER
 118.7 263.0
 GND CON
 121.7 263.0
 CLNC DEL
 135.2
 CPDLC



LOCALIZER 108.5
 I-GDI
 Chan 22

RADAR REQUIRED
 Weather minimums 3300 feet ceiling
 and 5 mile visibility.

Expect 4000 (3300 when authorized by ATC).

Vertical Guidance Navaid and Angle:
 PAPI 3.10°/TCH 55

1 NM	2	3	4	5	6	7	8	9	10	11	12	13	14	15	16
------	---	---	---	---	---	---	---	---	----	----	----	----	----	----	----

RIVER VISUAL RWY 13 APPROACH

When cleared for the RIVER VISUAL RWY 13 approach, remain over the Hudson River until starting the turn to final approach north of Central Park. Expect 4000 until abeam Statue of Liberty (3300 when authorized by ATC).

NE-2, 26 DEC 2024 to 23 JAN 2025

NE-2, 26 DEC 2024 to 23 JAN 2025

RIVER VISUAL RWY 13

40°47'N-73°52'W

NEW YORK, NEW YORK
LAGUARDIA (LGA)