

APP CRS	Rwy Idg	7002
314°	TDZE	7
	Apt Elev	21

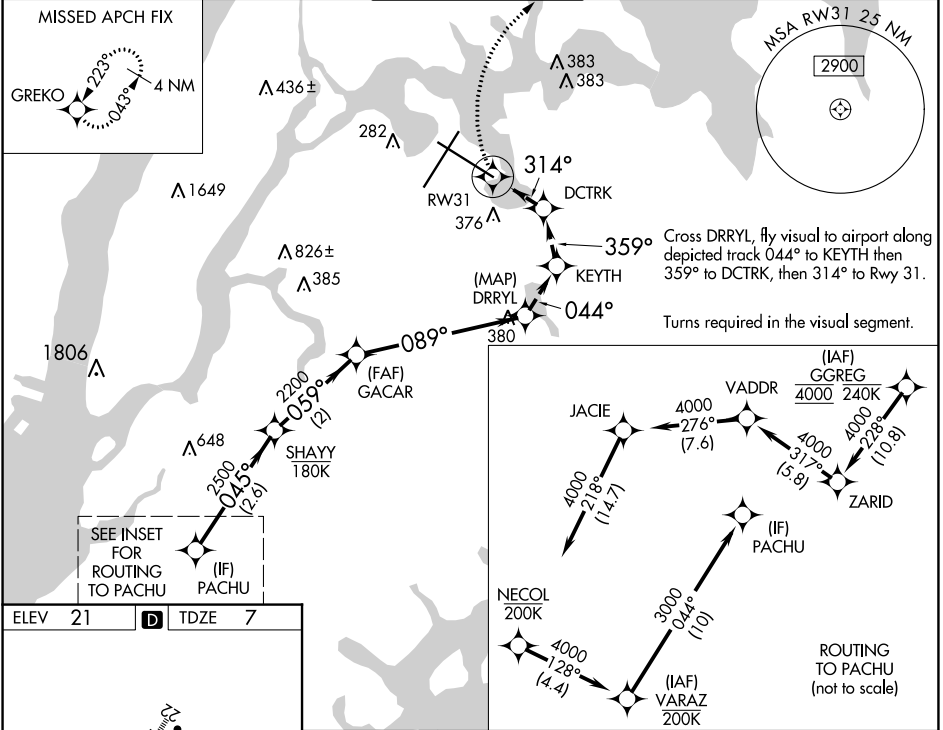
RNAV (GPS) X RWY 31

LAGUARDIA (LGA)

RNP APCH - GPS.
 RADAR required.
 ▼ Rwy 31 helicopter visibility reduction below 3/4 SM NA.
 ▲

MISSED APPROACH: (Do not exceed 165K until Rwy 31 then do not exceed 210K until GREKO). Climb to 2000 on FMS lateral path to RW31, then climbing right turn direct GREKO and hold. If unable to follow the FMS lateral path, turn left heading 025° and climb to 2000 direct GREKO and hold.

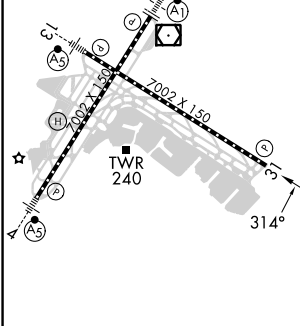
D-ATIS ARR	125.95	NEW YORK APP CON	120.8 263.0	LAGUARDIA TOWER	118.7 263.0	GND CON	121.7 263.0	CLNC DEL	135.2	CPDLC
D-ATIS DEP	127.05									



NE-2, 26 DEC 2024 to 23 JAN 2025

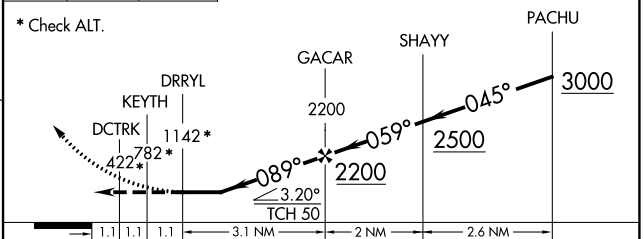
NE-2, 26 DEC 2024 to 23 JAN 2025

ELEV	21	D	TDZE	7
------	----	---	------	---



ROUTING TO PACHU (not to scale)

GREKO VGS1 and descent angles not coincident (VGS1 Angle 3.00/TCH 71).



TDZ/CL Rws 4, 13 and 22	HIRL Rws 4-22 and 13-31	REIL Rwy 31		
CATEGORY	A	B	C	D
LNAV MDA	1160-4	1153 (1200-4)		